

essential

THE UK'S NUMBER 1 OCTOBER 2015 £4.25

KITCHEN

BATHROOM BEDROOM

21
YEARS

BIRTHDAY
ISSUE

**NEW
SEASON
SCHEMES**

50+ PAGES OF
STYLISH HOMES

DARK STARS

*The new mood
for bathrooms*

**DESIGN-LED
TECHNOLOGY**

The future is bright

*Let's
Celebrate!*

- 21 YEARS OF KITCHENS, BATHROOMS & BEDROOMS
- £8,000 OF BIRTHDAY PRIZES

TOM KITCHIN | BEDROOM FLOORING | DESIGN ICONS | STYLE | TERENCE CONRAN



CLIVE CHRISTIAN KITCHEN

clivechristianinteriors.com



CLIVE CHRISTIAN LIBRARY

clivechristianinteriors.com



CLIVE CHRISTIAN DRESSING ROOM
clivechristianinteriors.com





Riviera Valencia Kitchen



CHARLES
YORKE

Kitchens & Living Spaces

— HANDCRAFTED IN ENGLAND —



For further information
please call

01623 756 080

www.charlesyorke.com

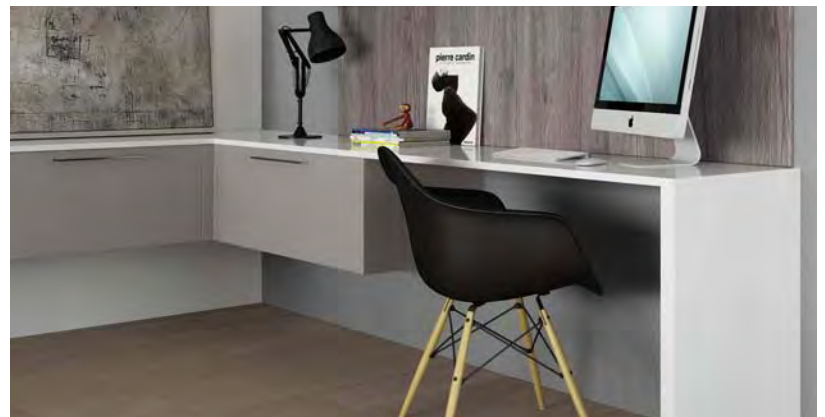






MASTERCLASS

KITCHENS



To request our brochure or find your local showroom,
visit masterclasskitchens.co.uk

PREMIER SHOWROOMS

Abergavenny	01873 850911	Ipswich	01473 806461
Abingdon	01235 554773	Jersey	01534 865750
Basingstoke	01256 810460	Leeds	01133 910179
Bristol	01179 246002	Lichfield	01543 440020
Bourne End	01628 528712	Loughton	0208 5081941
Cambridge	01223 466634	Nefyn	01758 721081
Cardiff East	02920 485888	Newport	01633 252187
Cardiff West	02920 593969	Northallerton	01609 780289
Carmarthen	01267 220900	Purbeck	01929 422345
Cheshunt	01992 643006	Seaton	01297 22559
Chelmsford	01245 392792	Sherborne	01935 817111
Dorchester	01305 251587	St Asaph	01745 582786
Dyffryn Ardudwy	01341 242015	St Neots	01480 477336
Eastbourne	01323 642075	Stamford	01780 654321
Esher	01372 467464	Storrington	01903 741004
Fleetwood	01253 283786	Swansea	01792 790088
Gloucester	01452 310451	Tring	01442 827997
Godalming	01483 424466	Utttoxeter	01889 565151
Guernsey	01481 242846	Wadebridge	01208 813231
Harrogate	01423 862286	Warton (Preston)	01772 631316
Haverfordwest	01437 763623	Waterlooville	02392 176380
Hay-on-Wye	01497 820644	Wokingham	0118 9783393
Hazlemere (Bucks)	01494 718585	Wolverhampton	01902 874200
Hereford	01432 279738	Worthing	01903 201901
Horley	01293 786116	York	01904 479792
Ingatstone (Brentwood)	01277 350800		

GREAT BRITISH KITCHENS



THE DIFFERENCE IS IN THE DETAIL

Visit our website smallbone.co.uk
or call 020 7589 5998



© reg design & design right
Part of the Canburg Group



SMALLBONE
of DEVIZES

INSPIRE YOUR SENSES

PORCELANOSA KITCHENS



KITCHEN: EMOTIONS TROTTER E6.90 ROBLE TORREFACTO & E4.90 PERGAMON MATE
FLOOR TILES: DOVER ARENA 59,6x59,6cm

CERAMICS
NATURAL STONE
WOOD PARQUET
TERRACOTTA
MOSAICS
KITCHENS
BEDROOM FURNITURE
HYDROMASSAGE
BRASSWARE
SANITARYWARE
TECHNICAL SOLUTIONS



PORCELANOSA Grupo

PORCELANOSA

TILES · BATHROOMS · KITCHENS · HARDWOOD

www.porcelanosa.com

SCOTLAND 0141 533 1000 · SOUTH EAST 01923 815 200 · MIDLANDS 0121 746 6464
NORTH WEST 0192 523 7807 · WESTERN 0117 959 7151 · YORKSHIRE 0130 230 4713



Welcome

to the October issue

This month we're in a celebratory mood as we pull out the bunting, light the candles and pop the champagne to mark 21 years of **EKBB**. Happy birthday to us! From humble beginnings as one of Britain's first and foremost specialist kitchen, bathroom and bedroom magazine, we're still the number one in the marketplace and the first-read of choice for discerning consumers and design professionals in the UK and Ireland. Come on a journey with us as we delve into our archives in **Flashbacks** (page 80), look back at the history of the kitchen in **Bring in the New and Then and Now**, (pages 89 and 93) and discover our favourite 21 household design items in **Icons of Style** (page 102.)



Design is always evolving and as a magazine that's constantly striving to bring you the best of what's new and now in the interiors world, it's important to mark this issue with a look at the years to come. We asked some of our favourite designers and tastemakers to predict what they think the next 21 years will look like in **Future of Design** (page 98) and we pick our favourites of current and upcoming trends for bathrooms and bedrooms in **Design Edit** (page 110). Of course, we can't talk about the future without considering the design-led tech that's coming with it – see **Style Statement** (page 124).

More inspirational design in this issue includes interviews with international architects and designers Sean Cochrane (page 70), Raphael Caspers (page 146) and Klopper & Davis (page 164). We also have a look at your options for bedroom flooring in **Take it to the Floor** on page 168. As well as all this, and as a special birthday thank you to you, our readers, we have over £8,000 of bathroom giveaways on pages 106 and 108.

Happy new design season and here's to another fun, inspirational and successful 21 years of **EKBB** magazine. Enjoy the issue.

Ciara

Ciara Elliott
EDITOR

Contributors this issue



Angelita Bonetti

An architectural and interior photographer, Angelita lives between Australia and Italy. She photographed the Perth bedroom on page 164 and was impressed with its eco credentials. 'My dream with my husband is to build a sustainable house together.'



Molly Forbes

When not writing about interiors, journalist Molly can be found beachcombing in South Devon with her husband and two young daughters. She wrote about the innovative kitchen in **Eclectic Elegance** on page 48. Molly blogs at motherisalwayright.com.



Amelia Thorpe

One of our longest-standing contributors to **EKBB** is London-based kitchens, bathrooms and bedrooms specialist journalist Amelia Thorpe. She writes about the history of kitchens for this issue in **Bring in the New** on page 89.



John Lewis
OF HUNGERFORD

0700 278 4726

www.john-lewis.co.uk

AUTUMN
SALE
NOW ON



Beaconsfield Blackheath Bristol Cambridge Chiswick Cirencester Cobham Fulham Harrogate
Hungerford Muswell Hill Oxford Tunbridge Wells Wantage Bedroom Showroom Winchester Scottish Sales

THE ORIGINAL PAINTED KITCHEN COMPANY - SINCE 1972



48

21
YEARS
EKBB



60

102

Contents

— EKBB OCTOBER 2015 ISSUE 234

essential kitchens

- 19 KITCHEN NEWS
Exciting new products, showroom launches and key diary dates
- 28 THE ROUGH WITH THE SMOOTH
A coach house in Cheshire is given an industrial makeover with glass and brick
- 40 PRETTY PRACTICAL
A Victorian house is revamped with a flowing Scandinavian-style kitchen
- 48 ECLECTIC ELEGANCE
A practical space with an area for dinner parties was the brief for this design
- 60 MODERN WARMTH
Walnut cabinetry creates a rich backdrop to this kitchen-dining hub
- 70 INTERIOR DESIGNER KITCHEN
Interior designer Sean Cochrane adds elegance to a Georgian townhouse

essential birthday

- 80 FLASHBACKS
We go through the archives to celebrate the evolution of EKBB over the years
- 89 BRING IN THE NEW
Take a trip down memory lane to the kitchens of yesterday and compare with the innovative designs of the future
- 93 THEN & NOW
Learn more about the history of the appliance brands we all know and love
- 98 FUTURE OF DESIGN
Top designers and tastemakers share their thoughts on the past and the future
- 102 ICONS OF STYLE
We commemorate 21 years with a round-up of iconic objects of design
- 110 DESIGN EDIT
We take a look at what's hot in the world of bathroom and bedroom design



28



19



on the cover

Exposed brickwork creates a backdrop to the Lava black cabinets from The Cheshire Kitchen Company. See page 28.

PICTURE PAUL CRAIG
■ cover stories

essential technology

- 120 TECHNOLOGY NEWS
Let us inspire your shopping choices with the newest home technology
- 124 STYLE STATEMENT
Add design flair to your technology with our pick of the hottest trends

essential bathrooms

- 133 BATHROOM NEWS
We round up the very latest bath designs, basins and vanity units
- 138 IN THE DARK
Go bold with your bathroom colour scheme and embrace the darker shades for an opulent and dramatic look
- 146 RAW BEAUTY
This old warehouse was transformed into a minimalist's dream – complete with a freestanding, statement gold bath
- 152 CHILD'S PLAY
Create a practical yet stylish bathroom for children using wooden furniture and soft-coloured furnishings
- 154 STAND ON LUXURY
Shower trays can be design-led too. Take a peek at our round-up

essential bedrooms

- 161 BEDROOM NEWS
Our pick of the latest furniture and storage, bed designs and linens
- 164 LONG DIVISION
This Aussie bungalow was totally reconfigured, resulting in a gorgeous new bedroom with en suite
- 168 TAKE IT TO THE FLOOR
Whether you opt for carpet, rugs or parquet, your choice of flooring can set the tone in your room
- 178 COSY & CALMING
Use a splash of colour in a neutral scheme with the help of soft accessories
- 180 BURNING BRIGHT
Add the final touch to a bedroom look with a luxurious candlestick

essential interviews

- 122 TOM KITCHIN
Michelin-starred chef Tom reveals the secrets to his restaurant's success
- 194 TERENCE CONRAN
Industry legend Sir Terence talks us through his design secrets

essential regulars

- 106 COMPETITION
108 COMPETITION
182 STOCKISTS
184 SUBSCRIPTIONS



EDITOR
Charlotte Coward-Williams

ACTING EDITOR
Ciara Elliott

ASSISTANT EDITOR
Emma Foale

STAFF WRITER
Lucy Macdonald

EDITORIAL ASSISTANT
Clarissa Wills

DESIGNER
Teresa Walker

PRODUCTION MANAGER
Reg French

CONTRIBUTORS THIS ISSUE
Angelita Bonetti, Darren Chung, Paul Craig, Amy Curtis, Molly Forbes, Hayley Gilbert, Mia Lind, Marc Millar, Anna Morley, Harriet Paige, Linda Parker, Victoria Rolison, Luc Roymans, Susan Springate, Amelia Thorpe

ADVERTISING MANAGER
Lenka Kourkumpa

SENIOR SALES EXECUTIVE
Dean Buckingham

NEW BUSINESS
Inayah Cooksley

CLASSIFIED SALES
Victoria Jennings

MANAGING DIRECTOR
Luke Patten

COMMERCIAL DIRECTOR
Darren Summerfield

FINANCIAL CONTROLLER
Lesley Shard

SUBSCRIPTIONS Tel: 01778 392471

BurdaInternational UK

The Tower, Phoenix Square,
Colchester, Essex CO4 9HU
www.hubertburdamediauk.com
Tel: 01206 851117 Fax: 01206 849079

INTERNATIONAL ADVERTISING ENQUIRIES

Burda International
Italy Mariolina Siclari
Tel: +39 02 91 32 34 66
mariolina.siclari@burda.com

Burda Community Network GERMANY Vanessa Noetzel
Tel: +49 89 9250 3532
vanessa.noetzel@burda.com

Michael Neuwirth
Tel: +49 89 9250 3629
michael.neuwirth@burda.com

AUSTRIA/SWITZERLAND

Goran Vukota
Tel: +41 44 810 21 46
goran.vukota@burda.com

FRANCE/LUXEMBOURG

Marion Badolle-Feick
Tel: +33 172 71 25 24
marion.badolle-feick@burda.com

USA/CANADA/MEXICO

Salvatore Zammuto
Tel: +1 212 884 48 24
salvatore.zammuto@burda.com

Reproduction Essential Repro | Printing Southern Print | Distribution Marketforce Tel: (020) 3148 3300.

Reproduction in whole or in part without written permission is prohibited. All rights reserved. Dates, information and prices quoted are believed to be correct at time of going to press but are subject to change and no responsibility is accepted for any errors or omissions. Neither the editor nor publisher accept responsibility for any material submitted, whether photographic or otherwise. While we endeavour to ensure that firms and organisations mentioned are reputable, the editor can give no guarantee that they will fulfil their obligations under all circumstances. © Hubert Burda Media UK 2015



MY LIFE DESIGN STORIES

Ubik walk-in closet. Senzafine Bangkok wardrobe, design Operadesign. Onda pouf.
Soori coffee table, design Soo Chan. Mad Chair, design Marcel Wanders.



To find your nearest showroom: **Poliform UK Ltd** 276-278 Kings Road London SW3 5AW, tel. 0207 368 7600
Design Centre Chelsea Harbour SW10 OXE, tel. 0207 352 0064 | **Poliform North** Victoria Avenue, Harrogate, showroom@poliformnorth.co.uk
Contact us for our free design service www.poliformuk.com

Poliform



charnwood

Exceptional British made wood stoves

01983 537780 www.charnwood.com



Kitchens

SIMPLY
ELEGANT
*Brighten up
your dining
area with
light wooden
furniture and a
subtle metallic
pendant light*

Burnished gold pendant,
£100; Raw oak table, £375;
Rattan dining chair, £185;
Raw oak bench, £185,
all from Cox & Cox

LATEST NEWS • INSPIRING REAL HOMES • SEAN COCHRANE KITCHEN

Kitchen News

The latest launches and inspiration-packed events

WRITTEN BY EMMA FOALE



Dark & handsome

Designed by Italian Alessio Bassan, the Factory kitchen from Key Cucine takes on a dark and mysterious appearance. The marsh oak wood on the door fronts has a rough and uneven texture which is tactile and eye-catching, and it also works well with the Antic Brown granite worktop. Function and ergonomics are at the forefront of this design with spacious drawers and practical accessories. Kitchen prices start from around £12,750, excluding appliances. keysbabo.com.

SLIM SHADY

In celebration of the 100th anniversary of Finnish designer Tapio Wirkkala, Artek has re-introduced the TW003 pendant lamp. It's the coloured transparent glass and geometric shape that catches your attention, making them ideal for hanging in decorative clusters. Available from October, from £102. artek.fi



WITH THE FLOW

To maintain some calm and order in a busy kitchen you need a reliable sink and tap. The Sync single-lever mixer is the latest product by Sieger Design for Dornbracht and it may just fit the bill. It features a tall spout, wide projection and also a pull-down with both spray and laminar flow modes to help with all kinds of food prep and cleaning. It's £800 in platinum matt. dornbracht.com.



Time will tell

From the minute we saw these quirky, hand-built Lovebird barometer clocks we knew we wanted one. The five illustrations rotate to show you the weather so there's no need to look out the window! They're available in blue, black or chrome with two sizes to choose from, starting at £275 each. loaf.com.

Bespoke

kitchens & interiors since 1994





Painted beauty

A look that is holding its own is the 'classic meets contemporary' style, which combines the best of both to achieve a kitchen that is beautiful and functional. A new addition to the range at Kitchen Stori is Georgia, a design with a Shaker-style door that can be painted in any shade from the 21-colour strong palette. Created with MDF Plus, the cabinetry is made to last and withstand everyday activities such as cooking and washing. From £7,000. kitchenstori.com.

If there's one colour that can take on many different personas, it's blue. Proving this, Little Greene has introduced 21 different hues of blue paint to its latest capsule collection. Shrugging off its reputation for being cold, the blue palette includes a wide spectrum of tones from indigo and navy to softer marine and linen hues. Prices start from £37 for 2.5l Absolute matt emulsion. littlegreene.com.

TRUE BLUE



One to WATCH

As part of the many designers and launches to see during London Design Festival this September, we're excited that Dutch ceramicist Lenneke Wispelwey, will be showcasing her porcelain tableware collection in an exhibition at Upstairs at SMUG. Coming in pretty sherbert pastels shades, the ceramicware features detailed geometric patterns to complement any scheme. ifeelsmug.com.



SLIDE & hide

Round in shape, the Turning tables designed by Theresa Arns for Danish company Menu, make a great addition to a living room or kitchen. To reveal hidden storage space for recipe books or magazines, you simply push the top of the table to one side to open it up. In white oak or black ash, they're £329 each. scandinavianshop.co.uk.



OLD SCHOOL STYLE



Bringing back a feeling of the past, lighting specialists Holloways of Ludlow have introduced the Old School Electric oak bulb wall lights. We love the simple oak bracket which works with either the exposed tear drop vintage-style filament bulb or matched with a blown glass shade in a choice of shapes. Prices start from £135. hollowaysofludlow.com.



Surface MATTERS

If your attention is turned to kitchen worktops, think durable and hardwearing and you won't go wrong. New and bespoke from J. Rotherham, Neolith sintered stone worktops are made from 100 per cent natural materials using precision technology which gives a clean cut. Shown here in the Iron Corten finish, prices start from £477 per sq. m. jrotherham.co.uk.

Modern LIVING

Easily adaptable and designed with contemporary lifestyles in mind, the Rivoli kitchen from Mobalpa combines the essential elements. A multi-functional island and open shelving in white matt lacquer are complemented by Kiffa ash oak, creating a cooking space that looks appealing and offers plenty of storage. Kitchen prices start from £15,000. mobalpa.co.uk.



Water FEATURE

As an important part of any kitchen preparation area, taps have become something of a talking point. The Henry one-hole bar faucet from Waterworks has a distinctive metal cross handle which gives it a utilitarian look. Each tap can be finished in a choice of metals such as antique brass or copper, chrome, nickel or gold. They are £1,481. waterworks.com.



MY LIFE DESIGN STORIES

Kitchen Collection
Phoenix. High Quality System



To find your nearest showroom: **Poliform UK Ltd** 276-278 Kings Road London SW3 5AW, tel. 0207 368 7600
Design Centre Chelsea Harbour SW10 OXE, tel. 0207 352 0064 | **Poliform North** Victoria Avenue, Harrogate, showroom@poliformnorth.co.uk
Contact us for our free design service www.poliformuk.com

Poliform | Varenna

DIARY DATES

The Decorative Antiques and Textiles Fair

This family-owned fair launched in 1985, so this year it's celebrating its 30th birthday. It brings together a wide range of decorative antiques and 20th century design in one place. The fair is well known as a source of the most beautiful painted furniture, lighting and mirrors as well as unique and quirky decoration accessories. There will be over 145 exhibitors under the marquees of this central London event. decorativefair.com.

WHEN? 29th September - 4th October

WHERE? Evolution, Battersea Park, London

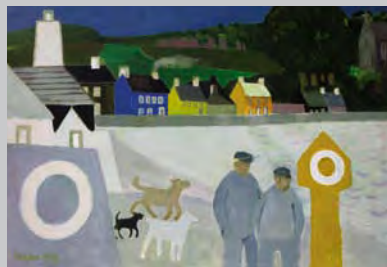


Esher Hall Antiques & Fine Art Fair

This year marks the eighth annual Esher Hall Antiques & Fine Art Fair in Surrey. If you are looking for one special piece or a selection of pieces for your home, there's the opportunity to hunt for exceptional antiques and fine art from all corners of the UK without having to travel too far. There's everything from furniture, fine art and sculpture to glass, jewellery, ceramics and collectibles as well as new exhibitors, including ceramic specialists, bringing fresh looks and ideas to the fair. esherhallfair.com.

WHEN? 9th-11th October

WHERE? Esher Hall, Sandown Park Racecourse, Portsmouth Rd, Surrey, KT10 9AJ



Grand Designs Live

Presented by British designer and television presenter Kevin McCloud, Grand Designs Live will be packed with over 500 exhibitors across six different sections. It's a great place to talk to the experts and see the latest trends for the home. Take time to browse through the areas including kitchens, bathrooms, interiors and technology. granddesignslive.com.

WHEN? 8th-11th October

WHERE? NEC Birmingham, B40 1NT



Shine bright

Taking inspiration from diamond cutting, the Hatton lighting collection features shades that are faceted on all sides. When switched off they are fascinating to look at but once turned on they come to life. The designs are hand-cast and they're an example of the versatility of bone china. The pendants are £235 each. originalbtc.com.

Wonderful WHITE



Recently added to the range of handmade kitchens at Cue & Co is the Waldemar which is based on familiar Scandinavian design where wood and white are combined. Shown here, it's spray painted in All White by Farrow & Ball with a Corian® worktop and oak splashback, as well as oak drawers. Kitchens start from £35,000. cueandco.com.

THE SOFT TOUCH

Wonderfully descriptive of its style, 'The Wild Coast' is the name of the new range from designer Tori Murphy. Textiles, cushions, fabric and accessories are in a subdued palette of Graphite, Smoke and Ecru which has been inspired by the natural beauty of Ireland's wintery coastline. Tabletop textiles are from £15. torimurphy.com.



FANCY A BREW?

Celebrating the British ritual of starting the day with a cup of tea or coffee, Tom Dixon has created the Copper coated set including a tray, a cafetière, a stovetop espresso maker, a milk pan, espresso cups, and a biscuit tin. His penchant for metallics continues, much to our delight! From £35 for the coffee scoop. tomdixon.net/uk.





The Portobello Kitchen © Copyright & Design Right Mark Wilkinson Furniture

Experience the world's finest furniture
www.mwf.com or 01380 850 007

Unmistakably
Mark Wilkinson

Part of the Canburg Group

Taking CONTROL

Choosing the perfect cooker for your home has been made easier with a new series of AGA models, combining timeless good looks with cutting-edge technology



AGA City60, £4,995

More than just a cooking appliance, the new generation of AGA range cookers offer complete control over everything you might need. From turning individual ovens on or off to cooking a multitude of meals just the way you like them, there are a whole choice of functions. At the heart of every AGA you can be assured that there's longevity, high performance and quality.

City Living

The electric AGA City60 is great for any city dweller who has a desire for a traditional range but is limited by space. At only 60cm wide, it is compact and room vented to enable it to be sited anywhere. It is also mounted on wheels. With two ovens and roasting, baking and simmering functions as well as a hotplate which allows you to boil and simmer, this model is very versatile. It also uses radiant heat which is gentler on food and locks in moisture and flavour. There are two design styles; one sleek and contemporary and the other more traditional, and 14 colours to choose from.

Tech savvy

If your kitchen is a place where you feel creative and keen to experiment, the AGA Total Control could be the choice for you. Beneath its traditional AGA exterior lies a state-of-the-art touch control panel. With a 3-oven model, each of the ovens and two



3-oven AGA Dual Control, £9,775

'At the heart of every AGA you can be assured that there's longevity, high performance and quality'



hotplates can be operated independently or together, and the same is true of the 5-oven model, but with the extra two ovens operated as a pair. What's great is that this range can also be turned on and off at the touch of a button with fast heat up times and low running costs (from £5 per week), which makes it ideal for year-round cooking.

Smart Saving

With the traditional cast iron good looks of the AGA range cooker we all know and love, the AGA Dual Control offers switch on/switch off hotplates as well as a new low energy setting for the ovens. These mean you'll have reduced running and servicing costs and it means that it can cost up to 50 per cent less to run than a 13-amp electric AGA cooker. Whatever the size of your kitchen, this model will give you the cosy ambient heat that only an AGA can offer. **EKBB**

For more information on AGA cookers including a one-to-one demonstration, call 0845 481 0062 or visit agaliving.com



3-oven AGA Total Control, £10,695



THE *rough* WITH THE *smooth*

Exposed brick, polished quartz and velvet smooth glass combine to give this coach house kitchen a glamorous look with an industrial edge

PICTURES PAUL CRAIG | WORDS HARRIET PAIGE

When Polly Logan was looking for a new home for herself and her three children, she began to see the derelict coach house that stood in the grounds of her parents' Cheshire home with new eyes. 'I had recently separated and my parents were getting to an age when they'd appreciate me being close at hand, so converting it was an opportunity to create a nice family set up,' explains Polly. Colonised by pigeons and parked cars it was far from habitable but, with a background in the bar and restaurant trade, and many trendy fit-outs under her belt, Polly was undaunted by the task at hand. 'I immediately got in touch with Richard Eastward who is the architect I'd worked with on the conversion of the derelict St Peter's church in Liverpool into Alma de Cuba, a stylish restaurant and bar. I knew that he would be on my wavelength.'

This was never going to be a standard conversion but it was while renting in a barn conversion locally that Polly's ideas about what she wanted fully crystallised. 'They'd plastered it out inside to create a modern home but I found it rather soulless. I knew then that I wanted to retain as much of the texture of the building as possible.' So she and Richard set to work creating an interior in which there was barely a plastered surface in sight. Exposed timber and steel beams, raw brickwork and wooden cladding combine to give an earthy industrial feel that celebrates rather than hides the building's heritage. 'I told Richard that I wanted Los Angeles meets Scandinavia!' laughs Polly.

At the heart of Richard's plan for Polly's new home was a 10 by five metre kitchen and dining space which, given Polly's love of entertaining and her busy family life, needed to be both showpiece and workhorse. Here, the industrial aesthetic fitted perfectly and Matthew Smith of the Cheshire Kitchen Company steered her towards a dark and moody look that adds to the atmosphere of the building without competing with the strong architectural elements. Surprisingly though, the starting point for the scheme was a cream coloured AGA, which was reclaimed from her parents' home. 'You might not naturally think of putting an AGA in a kitchen like this but it works with the eclectic mix of old and new that we have throughout the house,' says Karen.

This being Karen's first foray into the world of bespoke kitchens she's delighted with the solid functionality of her German-made cabinets. 'It's wonderful having a kitchen in which everything works beautifully and that fits our lifestyle so perfectly,' she says. 'Designing and creating it has been an amazing process.'

CKBB



COME ON IN

With its reclaimed York stone floor, oak cladding and exposed brickwork, the entrance hall sets the tone for the coach house. Beyond the open door lies the sitting room and, opposite, another door leads into the kitchen



'I wanted to retain as much of the texture of the building as possible. I said to the architect I wanted Los Angeles meets Scandinavia!'



CENTRE POINT

The kitchen is dominated by a three metre long island, topped with a chunky 60mm thick quartz worktop. With plenty of prep space, a sink and four bar chairs, it's the ideal place for Karen to chat with her three children while she prepares meals



TUCKED AWAY

At the end of the run of tall units, a neat pocket door hides a compact Siemens combi oven, which Karen uses as a backup for when the AGA is turned off

Kitchen profile

Polly Logan's kitchen occupies the heart of her coach house conversion. Lava black cabinets with a mixture of satin lacquer and matt glass doors by German manufacturer Next 125 create a subtle interplay of textures, which is added to by a chunky polished quartz work surface. A cream AGA and reclaimed York stone floor add a traditional dimension to complement the building's heritage.

THE CHESHIRE KITCHEN COMPANY

The Smithy, A51, Cheshire, CW6 0EH.
Tel 01829 781666. thecheshirekitchencompany.com
Kitchen by Next 125 at The Cheshire Kitchen Company. Prices start at £15,000.

BRIGHT SPARK

Above The flame orange shade of a classic Le Creuset pan sings against the backdrop of black quartz and exposed brick

ON THE MENU

Karen is a keen cook and loves to use seasonal ingredients from local producers


WARM UP

The four-oven cream AGA with additional electric hob was reclaimed from Karen's parents' house when they revamped their own kitchen and was the starting point for the scheme



IN THE SPOTLIGHT

Lighting was very important to Karen. Keen to avoid standard downlights she chose instead to make a feature of the fittings, picking a mix of galvanised pendants and vintage porcelain bulb holders



*'My advice is to always have more
lights than you think you need -
you can always turn them off'*

HIGHLY POLISHED

The polished quartz worktop on the island contrasts beautifully with the matt lacquer of the tall cabinet doors. The sink provides a visual break in the three metre long stretch

SET IN STONE

Reclaimed York flag stones contribute warm tones to the scheme and provide a practical surface that can withstand the rigours of a life with children, horses and dogs



MATTHEW SMITH
DIRECTOR,
THE CHESHIRE
KITCHEN COMPANY

How did you design the layout of Polly's kitchen?

Everyone talks about the working triangle but I prefer to think in terms of a kitchen being made up of three zones - for preparation, cooking and food storage. Each zone should contain everything needed for that task: plates, cutlery and utensils in the preparation zone; pans in the cooking zone; and fridges, freezers and larders in the food storage zone. In Polly's kitchen the island, the AGA run and the tall units comprise the three zones and I've configured them as simply as possible.

And what about storage?

You don't necessarily have to

have more space, just better planned space. In this kitchen we have used lots of drawers as they maximise storage area and give ease of access.

How have you defined each of the different zones?

I have tried to give each of the zones their own characteristics, while making sure it all marries together well. The tall units have a satin lacquer finish while the cabinet doors in the AGA run and on the island are in matt glass, which has a luxurious texture. I've given the island a 60mm thick worktop, compared to the 12mm thickness of the AGA run. I find that little bit of extra height gives a more

comfortable level for preparing food, and it also makes the island visually unique.

What about lighting?

Polly's kitchen has lots of lights as she was very keen for it not to appear dark. My advice is always to have more lights than you think you need, as you can always turn them off anyway. Having them on separate circuits and dimmer switches also gives you maximum flexibility. You also need to think carefully about the position of lights. For instance, remember not to position a light behind you on a prep zone as you'll cast a shadow on the surface.

Q&A



*'It's wonderful having a kitchen
in which everything works so
beautifully. Designing and creating
it has been an amazing process'*

**UPCYCLED
STYLE**

Karen had the dining table and bench made from steel and vintage floorboards.

The dining area features a panel of hexagonal tiles, bought from a local reclamation yard





Stockists

APPLIANCES

RIL179 **fridge**, £449; RIF178 **freezer**, £509, both Caple; SN66T095GB **dishwasher**, £801; HB84K552B **compact oven/microwave**, £732, both Siemens, all from The Cheshire Kitchen Company. Four **oven** with electric **hob**, from £12,675, AGA.

FIXTURES AND FURNISHINGS

Polished **worktop** in Arden Blue, £5,325, Silestone; Pro fusion **tap**, £934, Quooker; Zenuno 700U **sink**, £375, by The 1810 Company, all from The Cheshire Kitchen Company. Bespoke **dining table** (made from reclaimed floor boards), £650, Padwork. Charles & Ray Eames Style DSW Eiffel **dining lounge chair**, around £95 for a set of four, Amazon. Galvanised Industrial large zinc **nightshades**, £111 each; Galvanised angled **retro zinc shades**, £94 each; Vintage **porcelain ceiling light**, £56 each, all Urban Cottage Industries. St Ives **Harbour light** (above door in entrance hall), £40, Garden Trading. Industrial leather **bar stools**, £140 each; Up & Down steel **wall light** (either side of stove), £40, Rockett St George. Dik Geurts Instyle tunnel **wood burner**, £3,495, Fireplace Superstore. **Clock**, £120, Okells Garden Centre. York stone **flooring**, reclaimed from a church in Blackburn, approximately £18,000 for whole of downstairs area, Steptoes Yard. Wall **paint** in Grey Day; Doors painted in Gritty by Valspar at B&Q.

FOR STOCKISTS, SEE PAGE 182

COSY CORNER

The stove is double sided, so it heats the kitchen and dining area as well as the snug, which sits beyond the kitchen. The flue extends through the first floor to the roof, providing an extra source of heat. To increase its visual presence and complement the industrial style of the kitchen, Karen had a surround made in sheet steel



FOOD IS ART. PRESERVE IT.



In craftsmanship and
performance,
Sub-Zero is without
rival. Its advanced
technology keeps food
fresher longer.



www.subzero-wolf.co.uk

251 Brompton Road, Knightsbridge, London SW3 2EP 0845 250 0010



SPACE CREATION

Large sash windows replaced French doors to create more counter and cabinet space and a better flow to the kitchen layout. A colour scheme of white and grey plus marble and brass create a classic yet modern feel.

Pretty PRACTICAL

Anne Sophie and Hakon followed both heart and mind to create a kitchen which would look good, work well and feel even better

PICTURES MIA LIND | WORDS VICTORIA ROLISON





ISLAND LOGIC

The L-shape of the kitchen is mirrored by the central island, with deep drawers creating copious storage opposite the sink and Miele hob. Anne Sophie is thrilled with her Gaggenau ovens which sit alongside her fitted fridge, freezer and larder cupboards



'It was essential that we lived here before working on the kitchen because it helped us to see what didn't work, and encouraged drastic changes'

This Norwegian couple bring both a love of functional, stylish interior design and a passion for cooking to the kitchen table. Which is why it was so important for Anne Sophie and husband Hakon to create a space which not only looked good, but which worked really well too. It was especially key after spending years darting back and forth in the existing kitchen of their South London Victorian home, explains Anne Sophie. 'The kitchen is a funny L-shape, which was badly planned. We had a set of double doors where the sink is now which ruined the flow and meant you could run a half marathon just cooking a meal,' she remembers. 'It was essential to us that we lived here before working on the kitchen because it helped to see what didn't work, and encouraged us to make some quite drastic changes.'

After meeting several kitchen designers, the couple decided the Scandinavian practicality of Sola Kitchens designer Pia Rosling was right on their wavelength. Pia suggested removing the double doors completely and moving the sink from the corner of the kitchen to a

central position under a large window, to create a better flow. 'We did worry we would miss the natural light but we soon realised it was the only way to make the space work,' says Anne Sophie. 'We've actually found we have just as much light and spend more time looking into the garden, because you don't tend to stand in front of a door and take in the view in the same way.'

While a top priority was a clever and practical layout, when it came to the look of her Scandinavian Shaker-style cabinets and central island, Anne Sophie followed her heart, knowing she wanted grey tones with brass handles and marble countertops. 'Every kitchen designer I spoke to discouraged the use of marble as a countertop because it stains and etches, so I was aware of the risk, but I do like that it's a living material which will create a patina with age. It makes me think of those old Italian kitchens which have been used for years and years and are almost lovelier for their layers of cooking.'

Now, after welcoming a new baby just a month after the kitchen was finished, this foodie haven certainly has all the design and warmth for family life. **EKBB**



MIX & MATCH

The grey oak floor adds gentle warmth to the scheme, and provides a nice contrast against the cool grey cabinetry



SECRET SILVER

A double drawer in the island separates the everyday cutlery from the silverware



BRASS BEAUTY

The quirky addition of brass handles gives a unique feel to the Shaker-style cabinets



WATER WORKS

'With a young baby in the house the separate hotwater tap has been well used,' says Anne Sophie



PIA ROSLING
SENIOR DESIGNER,
SOLA KITCHENS

What was your brief?

Anne Sophie and Hakon wanted a very Scandinavian style for their kitchen – the rest of their home mixes modern design in a Victorian property. We decided to give the shaker style of our Frillen kitchen a London look by foregoing lots of decorative cornices and details. They originally had double doors which were breaking up the flow of the kitchen, so a really practical layout was key as well as a central island and breakfast bar.

Tell us about the island design.

They originally had a kidney-shaped island and hoped for an updated version, but the room shape meant that at every angle there was a tight spot. By using high legs we created the illusion of space and a light, airy feel.

How did you decide on the layout? As you first walk in, you have tall cabinets to your right

which house the ovens, integrated fridge, freezer, larder and broom cupboard. To the left and leading into the dining area are more tall cabinets for crockery and glassware. The island has deep, high drawers opposite the hob and the sink, creating lots of storage for cutlery, ladles and utensils. Here the family can move easily between the sink, island and hob.

What are your favourite design aspects?

I love the island on its high-raised legs, with its lovely grey furniture. I really like the brass drop handles, knobs and cups and think that the marble worktop works really well too. Also, because the couple had several big appliances, such as a juicer and coffee machine, we created a space to tuck them away in countertop cabinets with glass panels at the top. We also fitted this unit with customised lighting which casts a glow on the kitchen.

Q&A

Kitchen profile

The Frillen kitchen from the Sola Kitchens Classic Collection is hand-painted in light grey with a variety of brass handles including antique knobs, cup handles and pull-swing handles to give a warm, quirky feel. These, combined with traditional Carrara marble worktops, create a characterful space which is filled to the brim with storage. New windows were fitted and the conservatory replaced by Eco Home Construction, with Good London Builders managing the project.

SOLA KITCHENS

121 Munster Road, London, SW6 6DH.
Tel 020 3004 0898. solakitchens.com.
Kitchens start from £25,000



STYLISH SYMMETRY

Tall cabinets on either side lead into the conservatory dining area giving the kitchen a clean symmetry, while practical appliances are all concealed from view

SUNNY SPACE

Right Anne Sophie and Hakon used their conservatory to create a sun-filled and stylish dining area, with a clever mix of high-end designer Danish furniture

CLEAN LINES

Below The couple wanted their kitchen to be timeless, in keeping with their Victorian house. By keeping one wall clear they created the illusion of extra space and the chance to incorporate a statement wall clock, floating shelf and glass splashback



Stockists

APPLIANCES

Similar BO 450 T11 single **oven**, £2,512; BS 470 T10 **steam combi oven**, £3,414; WS 461 T10 **warming drawer**, £740; GF T11 100 **filter**, £154, all Gaggenau. KM2354 **gas hob**, £1,250; Similar DA419-7 **cooker hood**, £1,025; Similar G6260 SCVi **dishwasher**, £1,150, all Miele. KIR81AF30G **fridge**, £778, GIN38A55GB **freezer**, £919, both Bosch. Evolution 200 **waste disposal**, £540, InSinkErator. Empire Red 4.8L KitchenAid Artisan **mixer**, £430 and **blender**, £140; Magimix two-slice vision **toaster**, £165; Nespresso 11370 Magimix Pixie Clips **coffee machine**, £140, all John Lewis. Similar 10+ red and silver digital **stereo system**, £219, Tivoli.

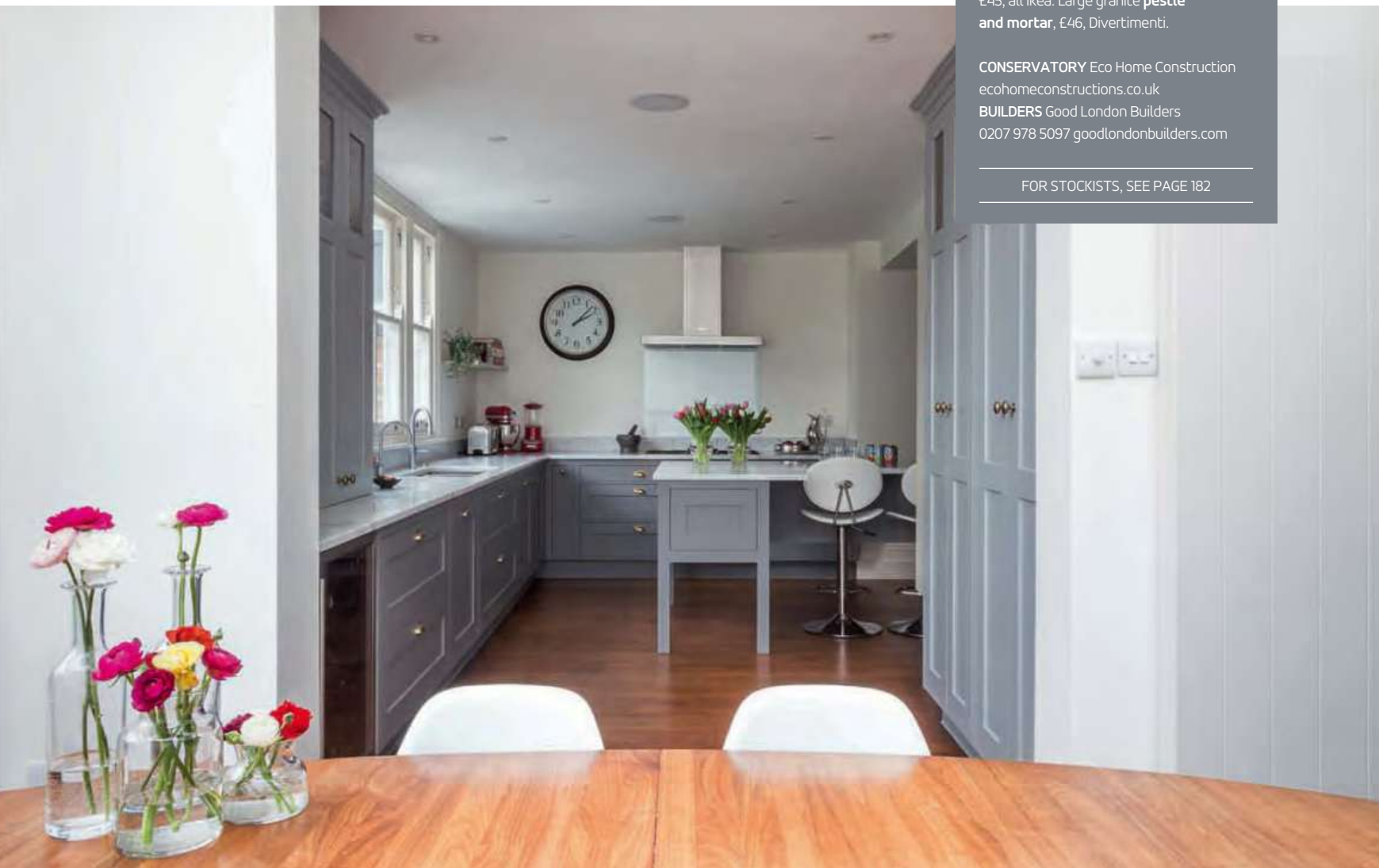
FIXTURES AND FURNISHINGS

KBX 160 55 20 **sink**, £505, Franke. Nordic round twin **taps** in brushed chrome with a PRO3-VAQ tank, £1,310, Quooker. Similar Calligaris New York adjustable swivel **barstools**, £521 each, London Designer Furniture. Eames DSR **chairs**, £226 each, The Conran Shop. GM 2152 oval American walnut **dining table**, £6,000, Naver Collection at Wharfside. Foto **pendant lamps**, £18 each, and Bravur **wall clock**, £45, all Ikea. Large granite **pestle and mortar**, £46, Divertimenti.

CONSERVATORY Eco Home Construction ecohomeconstructions.co.uk

BUILDERS Good London Builders
0207 978 5097 goodlondonbuilders.com

FOR STOCKISTS, SEE PAGE 182





TOM HOWLEY

EXQUISITE BESPOKE KITCHENS

NEW HARROGATE SHOWROOM OPENS 10TH SEPTEMBER 2015

TOMHOWLEY.CO.UK/KESKB CALL: 0161 848 1200 FOR A BROCHURE. QUOTE CODE K-ESKB29

FREE DESIGN SERVICE

AVAILABLE NATIONWIDE

BRITISH CRAFTSMANSHIP

UNRIVALLED QUALITY

**LONDON W1
CHELSEA** 020 7499 5145
020 7584 1218

**ALDERLEY EDGE
ALTRINCHAM** 01625 599 636
0161 929 5392

**BEACONSFIELD
BRENTWOOD** 01494 673 443
01277 214 587

**BRISTOL
ESHER** 01179 730 981
01372 462 378

A MEMBER OF THE NEVILLE JOHNSON GROUP



LET THERE BE LIGHT

Double doors installed at the entrance of the kitchen along with large windows on both sides mean light floods in throughout the day. Recessed spotlights plastered into the ceiling create minimalist lighting, adding to the bright and airy atmosphere



Eclectic ELEGANCE

Using innovative design, what was once a regular kitchen in a terraced home has been transformed into a modern space ideal for easy family living

PICTURES DARREN CHUNG | WORDS MOLLY FORBES



HIDDEN HUB

Top The bespoke dresser sits in the dining section of the room, providing a place to showcase Natalie's collection of crockery

WORKING WITH WOOD

Middle The kitchen island is made from reclaimed oak floorboards salvaged from a Belgian château

CLEAN LINES

Bottom The design team came up with an innovative 'no handle' feature in the main prepping area of the kitchen, giving a sleek and streamlined feel to the space



STYLE FUSION

A mixture of cabinet styles, materials and features were used to create an eclectic design that perfectly blends the traditional and contemporary in one cohesive look

Many designers dream of being given a blank canvas to create something innovative, bespoke and forward-thinking. When Richard McGee took on the design of this remodelled kitchen

in an end-of-terrace house in West London, little did he know he would enjoy the project so much he'd become good friends with the client, Natalie Smith.

'I got involved in the project very early on, before any of the building work had started,' says Richard. 'During the consultation process with Natalie it became clear that her style was quite eclectic so the design was about a space that functioned well and showcased a mixture of styles in a coherent way.'

Richard soon discovered the main challenge at hand was to create an area that would work as both a comfortable kitchen and a formal entertaining space to suit the many dinner parties Natalie enjoys hosting.

'I was trying to separate those two elements, so the dining area and the bespoke dresser houses all her crockery, while the kitchen is where all the food storage and prep happens,' says Richard. 'The dresser conceals a built-in dishwasher too, making it easy to clear the table, clean it and put it all away. It means the really nice tableware never mixes with the cooking pots, pans or utensils at the other end of the kitchen.'

'I wanted a functional and easy to manage kitchen with clear prep and dining areas,' explains Natalie. 'The kitchen was the first room to be fully designed and decorated so it was important to set the tone.'

This room is peppered with bespoke design solutions making it about as far from an off-the-shelf version as you can get. In fact, Richard was given strict instructions to avoid 'a fitted kitchen look' in his brief. 'This is why we created built-in cabinets that have an element of the freestanding look. Creating bespoke furniture also meant we were able to blend a mixture of styles and give it a bit of that eclectic cabinetry feel.'

Another quirky design feature is a total lack of handles anywhere in the kitchen. 'We had to come up with a handleless finger detail which is quite unusual for an in-built kitchen,' says Richard. 'Natalie didn't want anything protruding so we came up with this little design ourselves from a lot of prototypes.'

While Richard was asked to design a space that blended a mix of styles, he was aware it needed to flow with the classical look of the rest of the house too.

'This is largely down to the materials we used. For example, the island is made from reclaimed oak floorboards. We sanded and stained them to soften the look so they sit well with the stainless steel worktops.'

'The result is a space that is airy and ultra-functional,' says Richard. 'Natalie absolutely loves it. It's an integral part of her home and she spends more time here than any other room in the house.' **EKBB**

**BESPOKE
BEAUTY**

The room features freestanding, bespoke pieces designed to avoid an 'off-the-shelf' feel. The result is a space that feels open, airy and light

'The island is made from reclaimed oak floorboards. We sanded and stained them to soften the look so they sit well with the stainless steel worktops'

EASY LIVING

The kitchen island is designed to function as a working space rather than somewhere to congregate and chat. Natalie loves the satin coolness of the stainless steel and how it works alongside the warmth of the other concrete worktops





Kitchen profile

Bespoke, fitted Shaker-style cabinetry is hand-painted and includes a 'no handle' design. Features like the beading detail are picked out in some of the cabinets but pared right back in others to bring a sense of cohesion without matching completely. The stainless steel and concrete worktops add an industrial element, while the island is made from reclaimed oak floorboards sanded down and treated with a clear stain to soften the look. Added details include recessed spotlights plastered into the ceiling, pendant lights and a pull-out larder with removable vegetable box.

HOLLOWAYS OF LUDLOW

121 Shepherd's Bush Road,
Brook Green, Hammersmith,
London, W6 7LP.

Tel 0207 602 5757.

hollowaysofludlow.com

Bespoke kitchens from Holloways
of Ludlow start from £25,000.



PORCELAIN EFFECT

Top Natalie says she still gets huge delight from the gently patterned porcelain floor tiles and the pale oak tones of the interior cabinets

INDUSTRIAL APPEAL

Above and right Stainless steel worktops sit against rustic oak on the kitchen island, while resin-sealed concrete is used for the main worktop





‘I was given strict instructions to avoid a fitted kitchen look. This is why we created built-in cabinets that have elements of the freestanding look’

A COOK'S HAVEN

State-of-the-art appliances include a stainless steel fridge-freezer and a high design spring hose



HIDDEN ELEMENTS

The freestanding, Shaker-style dresser in the dining area complements the cabinetry in the working end of the kitchen. It conceals an integrated dishwasher and bin to make clearing away after dinner parties a quick and easy task



SPACE AND LIGHT

Having the freestanding furniture creates a sense of space, making the room feel much bigger and lighter

HEART OF THE HOME

With the remodel complete, Natalie loves to spend time in the kitchen, describing it as the perfect first step in the refurbishment of her home

‘I really like the way the kitchen feels so light and airy and how it has a classy yet industrial feel’



RICHARD MCGEE
DESIGNER,
HOLLOWAYS
OF LUDLOW

What was the starting point for the project?

Looking at how the kitchen is going to be used and then space-planning. I look at the position of appliances, preparation and cooking zones and work out how the kitchen is going to function as a space. After a few conversations it became clear that the client was a keen cook and liked to entertain, so the design needed to reflect this.

What was your inspiration for the materials and styles of furniture used in the kitchen? I had a detailed brief to work from and through the

use of Pinterest I knew the client's taste was quite eclectic. It became clear she wanted a classic style with hints of industrial design. This is why we used hand-painted fitted Shaker-style cabinetry along with freestanding furniture, contrasting with the concrete and stainless steel worktops, as well as the reclaimed oak floorboards on the island.

How important is light in a kitchen? The lighting in a kitchen can make or break it. Luckily this kitchen has two large windows along with glass doors, so there's a lot of natural

light. We also added quite a bit of lighting with recessed spotlights plastered into the ceiling rather than chrome, so they're minimalist and don't shout at you like chrome fixtures sometimes would.

Are there any key features you're really proud of?

I really like the way the kitchen feels so light and airy and how it has a classy yet industrial feel. The mixture of classic cabinetry sits well with the contemporary island because of the use of reclaimed oak floorboards. The whole design gels together without trying to show off.







ANTIQUE CHIC

Above Natalie is influenced by her French roots and love of antique furniture, describing her style as tending towards the traditional rather than the minimalist

COOL EXTERIOR

Above right This end-of-terrace West London home was originally built around 1935. After major refurbishment the house now has five bedrooms

COFFEE BREAK

Right The bespoke freestanding corner unit is used for breakfast items such as a coffee machine, toaster and cereals. The family and guests can eat breakfast without disturbing any food prep Natalie may be doing in the main kitchen area



Stockists

APPLIANCES

Freestanding **fridge-freezer**, from £2,190; Dishwasher **drawer**, from £1,042, both Fisher & Paykel. G4760 SCVI 45cm **dishwasher**, from £1,000; H6260BP single **oven**, from £1,132; DG6200 **steam oven**, from £899; KM 6358 induction **hob**, from £1,359, all Miele. Stratus ceiling-mounted **extractor**, from £1,364, Westin Design. K7 **tap** in brushed steel, from £650, Grohe.

FIXTURES AND FURNISHINGS

30mm LCD concrete **worktop**, from £1,030; 4mm ABK stainless steel wrap-around **island worktop**, from £4,480; 6mm Antique bronze toughened mirror **splashback**, £1,200; Nickel-plated D **handles**, £131 each; Verpan moon **pendant**, £535; Bell blown glass **pendants**, £100 each, all bespoke by Holloways of Ludlow. Ebbe Gehl Mira 4-8 seater extending **dining table**, £899; Vitra Eames DSR **chair**, £225; House by John Lewis Jasper **dining chair** in white, £39; Croft Collection Pew **dining chair**, £115; Philippe Starck for Kartell Masters **chair** in white, all John Lewis.

FOR STOCKISTS, SEE PAGE 182



Outstanding in its field



When you see a Britannia range cooker for yourself, you'll soon realise why they're the pick of the crop. Elegant design hides a quality and ruggedness that's right at home in even the most hardworking kitchen, while autumn can be colourful with a range of delightful colour options.

For more information or to find your local stockist visit www.britannialiving.co.uk



Aber Gas & Electric
Aberystwyth 01970 617 779

Appliance City
Nottingham 0115 965 1937

Appliance Direct
Morecambe 01524 400 703

Appliances Direct
South Normanton 0871 984 4416

Borshch Electrical
Birmingham 0121 773 6361

Brisco Williams
Swansea 01792 894 961

Built In Kitchen Appliances Ltd
Liverpool 0151 263 8966

Capital Appliance Centre Ltd
Harlescote 01743 463 261

Cookers and Ovens by Tippers
Lichfield 01543 414 800

Coopers
Bath 01225 311 811

Global Domestic Appliances
St Albans 01727 896 767
North Finchley 0208 492 7500

HBH Woolacott
St. Austell 01726 222 970

Herbert Todd
Harrogate 01423 701 496

Homemaker Ltd
Shaftesbury 01747 851 476

Mains Home Electrical Centre
Bishops Cleeve 01279 755 213

Marks Electrical
Leicester 0116 251 5515

Mike Sanderson Electricals
Fleetwood 01253 870 890

Molesey Refrigeration Centre
East Molesey 0208 979 4619

Nailsea Electrical
Bristol 01179 246 002

Paul Davies Kitchens & Appliances
Bolton 01204 387 767

R N Williams & Sons Ltd
St. Asaph 01745 582 254

RDO Kitchens and Appliances
Reigate 01737 240 403

Romerils
St. Helier 01534 738 806

Sonic Megastore Ltd
Bradford 01274 575 000

Stellison Ltd
Brentwood 01277 233 373
Chelmsford 01245 252 325
Ipswich 01473 261 950

The Stove Centre
South Molton 01769 574 411

britannia

Your life. Our passion



FIRST IMPRESSION

A glimpse from the entrance hall through the pocket door to the kitchen

MODERN *warmth*

Siren and Nicolas Beckmann have created a cool cocoon-like kitchen space in the heart of their London apartment

PICTURES DARREN CHUNG | WORDS AMELIA THORPE

As an architect, Siren Beckmann is used to imagining how a building might look with the right kind of design vision. Which is just as well,

given that the Victorian apartment in West London she bought with husband Nicolas hadn't been updated since 1969. 'It was a case of renovating everything,' says Siren.

Situated on the fourth floor of a mansion block, the three bedroom apartment had an odd kitchen arrangement. 'Even though it was right in the centre of the flat, the kitchen felt isolated from all the other rooms, because it had only one tiny door,' explains Siren, who immediately began planning a reconfiguration. 'I put in openings to bring in light from windows along the hall,' she continues. Not only did the two new pocket doors and glazed opening on to the hallway open up the kitchen, they also had the effect of making the hall seem less long and narrow. 'I like the way that light now flows through the open areas and links the kitchen to the rest of the flat,' she says. Their young daughters, however, see the openings rather differently – as an opportunity to play peekaboo!

Siren and Nicolas chose Roundhouse to produce their kitchen cabinetry. 'We liked the natural beauty of the furniture and the fact that all the kitchens are made in the UK,' explains Siren. And the brief to designer Jim McCabe? 'We wanted a cosy feel in here, a place with a certain weight, warmth and security,' she says. The walnut cabinetry was chosen for its natural graining and depth of colour, an effect balanced by smooth polished plaster walls and gently textured ceramic wall tiles with an 'imperfect' finish.

'I'm from New Mexico where traditional homes have thick walls with lots of textures,' says Siren. 'They make a room feel inviting, and I love to see how the changing light alters the appearance of the surfaces throughout the day.' While the rest of the apartment is flooded with natural light, Siren says that the kitchen offers a contrasting, snug effect that she and her family enjoy. 'We love to get together and sit around the table,' she says. 'It feels cosy and private, and it's where we catch up after a long day.' **EKBB**



EYE SPY

Through the window here you can see comfortable bench seating from Another Country



Kitchen profile

Urbo cabinetry in randomly selected walnut veneer creates a clean-lined and contemporary, richly coloured backdrop in this London apartment. Worktops of Silestone Blanco Zeus Extreme quartz and smooth polished plaster walls contrast with a bespoke recessed wall cupboard in Charcoal matt lacquer. Antique brass arch handles complete the warm and inviting effect.

ROUNDHOUSE

11 Wigmore Street, London, W1U 1PE.
Tel 020 7297 6220.
roundhousedesign.com
Kitchen prices from £35,000.



CALM CONTRAST

The warmth of the walnut cabinetry contrasts with the Flint matt porcelain floor tiles



*‘Even though the kitchen is right in the centre of the flat it felt isolated.
Light now flows through which links it to the rest of the space’*





‘Often the designs that look the simplest are the most complex. It is all about attention to detail’

BE SEATED

Above right An ash-topped dining table from Another Country offers light contrast against the walnut and leather chair and Urbo cabinetry in walnut veneer

BEAUTIFULLY IMPERFECT

Above Brick-shaped Ladrillo tiles have a handmade look and feature subtle imperfections for an interesting finish



JIM MCCABE
DESIGNER,
ROUNDHOUSE

How did you begin the project?

Siren was very clear about what she and Nicolas wanted to achieve, so my focus was on ensuring that we could fit in all the storage and appliances perfectly, making sure that the linear design was immaculate and that the room didn't feel in any way cramped. I was able to fit the main food storage ovens in one tall section, accommodate the hob and downdraft extractor below the window, and then include a run of base units to house drawers, bins, integrated dishwasher and the washer dryer.

particularly wanted to create a different effect - one with more of a patchwork 'perfectly imperfect' look. This sounds easy, but actually requires very careful hand work to ensure that variations are subtle. The door and drawer fronts are flat fronted and linear, so the veneer needed to be very carefully applied to ensure it is shown to its most beautiful effect.

What is the key reason for the success of the design?

Often the designs that look the simplest are in fact some of the most complex to achieve. Here it is all about attention to detail - from the technical challenge to fit in everything required through to the charcoal granite-effect finish of the sink, which picks up on the colour of the wall cabinet, and even the floor and door frames used throughout the apartment.

Can you tell us about the finish of the cabinetry and particularly the mismatched effect?

The walnut veneer has a random finish. Most of our veneered furniture is book-matched, so that the grain follows through, but here Siren

Q&A

MIXED WOODS

Different timbers – from the ash of the bench to the dark oiled finish of the American Black walnut chairs – add interest to this family's dining area



COSY MODERN

The family like to gather around and catch up at the end of the day at their snug kitchen table



'I'm from New Mexico where we have thick walls with lots of textures. I love to see how light alters the appearance of the surfaces throughout the day'



**DOWN TO
DETAIL**

Urbo cabinetry features a flat-fronted design and linear finger channels to enhance its contemporary look



WALL TO WALL

Above The glazed cabinet is set back into the wall niche to create a less obtrusive look

OPPOSITES ATTRACT

Right The black detailing on the Neptune mixer and the Fraganite Onyx finish of the sink contrast with the white Silestone Blanco Zeus Extreme quartz worktop



Stockists

APPLIANCES

DGC 6805 XL combination **steam oven**, £3,799; H6800 BM combination **microwave**, £2,749; G6583 SCVi K20 fully integrated **dishwasher**, £1,650, all Miele. CI604DTB2 induction **hob**, £975, Fisher & Paykel. Lisser **downdraft hood** in black glass, £1,751, Westin Design. IKB 3550 integrated larder **fridge**, £1,398; UIG 1313 integrated under counter **freezer**, £504, both Liebherr. iQ500 WK14D540GB built-in **washer dryer**, £1,033, Siemens.

FIXTURES AND FURNISHINGS

Neptune **mixer** in black and chrome with pull-out spout, £169; Kubus KBG 110-50 OX Fraganite Onyx undermounted **sink**, £333, both Franke. Silestone Blanco Zeus Extreme composite stone **worktops**, about £5,000, Roundhouse. Antique brass arch **handles**, from £10 each, Chloe Alberry. Flint matt porcelain **floor tiles**, from £57 per sq. m, R.I.M. Tile & Mosaic Boutique. Ladrillo Soft Grey column **wall tiles**, £92.49 per sq. m, Fired Earth. Similar **polished plaster walls**, priced to order, Surface Form. **Dining Table** Two, £1,775; **Bench** One Back, from £840, both Another Country. Square guest **chairs**, priced to order, BDDW, New York. Similar **pendant lamp** (above dining table), from a selection, The Conran Shop. **Painting** by David Price (in kitchen) and **painting** by Christopher Cook (in entrance hall), both from Art First. Alternative Flooring **carpet runner** (in entrance hall), from a selection, Solid Floor. Delta V black **pendant light** (in entrance hall), around £1,030, Rich Brilliant Willing.

FOR STOCKISTS, SEE PAGE 182



Make yourself at home

Create a kitchen where the welcome is warm, cooking is a joy and everyone loves to gather

Suffolk kitchen lovingly hand-painted in Charcoal with brass handles and perfectly irregular Elcot tiles.

Corinium lidded jar and serving platter from £36

Create your own designs at neptune.com
Stores nationwide

N
NEPTUNE

INTERIOR DESIGNER Kitchen

Timeless marble and gentle shades of ivory combine to create classic elegance in this central London Georgian home

PICTURES PAUL CRAIG | WORDS AMELIA THORPE

*f*aced with a series of small and gloomy rooms in the lower ground floor of a Georgian townhouse in London's Mayfair, interior designer Sean Cochrane was presented with a challenge. He was asked to restore the kitchen to its former glory and make it match the glamour of its W1 postcode. One of the key aims was to create a more spacious kitchen on the lower ground floor so that the owners could enjoy breakfast and casual meals in more natural light and comfort than previously permitted. Although the house is Grade II listed, Sean was able to remove an internal wall, as it wasn't original. 'We probably only gained a few metres of extra space but it made a huge difference, giving us room to include the island and table,' explains Sean. He also made use of the former cellar, digging down to increase ceiling height and converting it into a utility and laundry room, a few steps down.

'This gave us room to include an extra freezer, a wine cooler, washing machine and dryer rather than trying to squash everything into the kitchen,' he says. 'I wanted the kitchen to echo the classic and timeless design we had introduced to the rest of the house. We had to accentuate the light and spacious feel and to make sure that there was warmth – after all this is the heart of this family's home.'

Using a combination of natural marble, a warm oak floor and traditional painted furniture, the room began to take shape. Featuring a bespoke cabinetry design especially created for the project by Sean, the look is one of restrained elegance. 'I wanted to accentuate the beauty of the house, not fight with it,' he says. 'It's now designed to look as if it belongs to the house, as if it's always been here.'



SEAN COCHRANE

CREATIVE DIRECTOR,
COCHRANE DESIGN

Sean specialises in luxury residential interior design and has an international reputation for his award winning designs. He is particularly well-known for his attention to detail and personalised services to clients who want a bespoke service from space planning to lighting, bespoke joinery and cabinetry, furniture and soft furnishings.



PROJECT DETAILS

CABINETRY Bespoke, painted in Farrow & Ball Joa's White **WORKTOPS AND SPLASHBACK** Polished Carrara marble, all by Cochrane Design and made by Paragon Furniture. Kitchen prices from £60,000 **Ovens** H2661BP single oven, £1,190; H6200BM combination microwave, £1,499, Miele **DISHWASHER** G 6572 SCVi fully integrated, £1,450, Miele **FRIDGE & FREEZER** KI81RAF30G fully integrated larder fridge, £979; GI38NP60 fully integrated freezer, £1,429, both Siemens **TAP** similar, Melford bridge mixer in chrome, £170, Abode **BOILING TAP** Classic in polished chrome, £940, Quooker **SINKS** Peak PKX 110 55, £415; Peak PKX 110 18, £335, both undermounted stainless steel sinks, from Franke **LIGHTS** Waldorf LD50 ceiling lights, £750 each, India Jane **FLOORING** European prime grade oak, £95 per sq. m, Cheville Parquet **WALL MIRRORS** Bespoke, about £600 each, Cochrane Design **DINING TABLE** Antique, try I & JL Brown for similar **DINING CHAIRS** Similar, Frances Carver chairs, from £720 each, The Sofa & Chair Company **IN UTILITY: APPLIANCES** All Miele





LET THE LIGHT IN

Although the kitchen is on the lower ground level of the six storey house, the new design makes maximum use of the light that floods in from the original sash windows, while box and bay trees planted just outside introduce a view of greenery

SOFT & SIMPLE

Left Soft ivory colours and cool marble are a gentle combination, enlivened by both the warmth of the golden oak floor and eye-catching sleek appliances

‘We had to accentuate the light and spacious feel and to make sure there was warmth – after all the kitchen is the heart of the family’s home’

**MAKE A
SPLASH**

A marble-backed wide gas hob is framed by a painted surround, especially designed by Sean Cochrane



SHINE BRIGHT

Waldorf ceiling lights add a touch of Art Deco sparkle above the classic Carrara marble surfaces

Q&a

How did you create the layout and cabinetry design? Once we had established

that we had room to include the island, everything else fell into place. We opened up the chimney breast to make space for the large hob, and surrounded it with a very simple frame to add a touch of elegance. All the furniture is framed and takes the same classic design cue. The cornice work is new, but made to look as if it has always been there and it adds some character, in keeping with the Georgian age of the property. The tall bank of furniture houses the appliances and sits next to the original dumb waiter, which takes dinner up to the formal dining room situated above.

Can you tell us more about the island?

It is the focal point of the room, and bridges the space between the 'working wall' and the dining table, offering both prep and serving space. It is set on a built-out plinth, designed to make it a bit more of a statement in the room, like a substantial piece of furniture. But painted in its soft ivory colour, it doesn't look too heavy for the room.

What about the marble? Carrara marble has such beauty and timeless glamour, it adds instant sophistication. Here, its polished surface reflects natural light, boosting the sense of space, as do the wall mirrors and Deco-inspired ceiling lights.



DINE IN STYLE

Above The antique table makes a cosy area for breakfast or intimate supper

HIDDEN EXTRAS

Far left A bespoke pantry cupboard makes use of the slender space behind the entrance door to the kitchen. It features oak drawers and shelves, plus a marble cool shelf

WHAT LIES BENEATH

Left The utility room features painted cabinetry and Carrara marble worktops, everything immaculately finished to fit the original curved walls



LEISURE

FEAST AT YOUR LEISURE

Big cooking made easy is our philosophy. Which is why our range cookers, with their numerous ovens, multiple hob burners and dedicated grills, are perfectly designed to make feasting easier for everyone.

Cake lovers, rejoice in the knowledge that the most delicious chocolate and almond praline filled raspberry macarons can be your creation.

Whether your tribe dines on culinary adventures or comforting pleasures, you'll find your favourite feast at **leisurecooker.co.uk**



Range CK90F232C



an everyday masterpiece

the beauty of art; the quality of caesarstone
statuario nuvo 5111

www.caesarstone.co.uk



Cesar

Maxima 2.2

Design

Gian Vittorio Plazzogna

ESPRESSO DESIGN LTD

149 St John's Hill, Battersea
London, SW11 1TQ
enquiries@espressodesign.co.uk
www.espressodesign.co.uk

NGI DESIGN LTD

4,5 & 6 High Street, St Martins
Stamford, PE9 2LF
enq@ngidesign.co.uk
www.ngidesign.co.uk

TILES & BATHS DIRECT LTD

60 West Hendon Broadway
London, NW9 7AE
daniel@tbkdirect.co.uk
www.tilesandbathsdirect.co.uk

SO FURNITURE LTD

24 Seamoor Road
Bournemouth, BH4 9AR
kmcewing@sofurniture.co.uk
www.sofurniture.co.uk

CUCINE LTD

terry@cucine.gg
www.cucine.gg

AGENT: BIANCHI FURNITURE LTD

stephen@bianchifurniture.co.uk

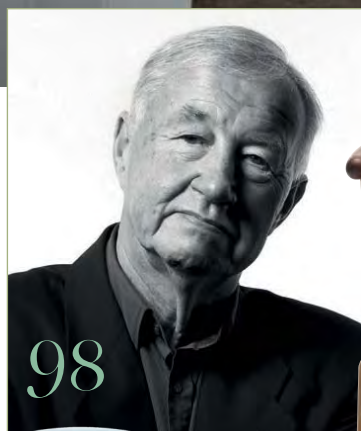
The names of Cesar retailers
are published on Cesar's website

It's our *Birthday*



110

21
 YEARS
 EKBB



98



102



LET'S CELEBRATE!

Come join us as we raise a toast to 21 years of **EKBB** magazine. First, we are delving into the archives in **Flashbacks** (page 80), and looking back into kitchen history in **Bring in the New** and **Then & Now**, (pages 89 and 93). Then we take a voyage to the future where we look to what's next for kitchens, bedrooms and bathrooms in **Future of Design** (page 98), **Design Edit** (page 102) and **Style Statement** (page 124). We've also got £8,000 worth of prizes to give away on page 106. Here's to 21 years!



Flashbacks

With a stylish mix of interior design, technology and lifestyle, we've always been more than just a kitchens, bathrooms and bedrooms magazine. Here are some of our favourite memories...

FEATURE BY CIARA ELLIOTT



IN AN ENGLISH COUNTRY KITCHEN

21 years ago marked the beginning of the 'country kitchen' look (above, 2 and right, 6) and we went on to do this kitchen shoot back in the August 2009 issue (top left, 1) when the iPod was the gadget of the summer. We had a look into Lisa Snowdon's brand new Smallbone L-shaped kitchen (shown 7), while the new industrial trend develops in more recent issues (shown 3, 5). We've also celebrated the longstanding career of chef Jamie Oliver (4), pictured on a houseboat.



A LOVE AFFAIR WITH DESIGN & WOOD

To mark the Royal Wedding of Prince William and Catherine Middleton, we had a Best of British issue in May 2011 where we gathered some of the most innovative kitchen designers of the day at RIBA (9). In amongst them is Katie Fontana from Plain English and the ever-characterful Mark Wilkinson. Meanwhile, wooden floors and cabinetry have really stood the test of time – look at the opposite page from the early noughties (16) and compare with more recent issues (opposite, 3, and 11). We interview designer-maker and master woodworker, Sebastian Cox (10) and have an exclusive glimpse into Elle Macpherson's wooded lakeside hideaway (8). Recently we fell for this timber-framed extension and modular kitchen in solid walnut (12).





BACK TO BASICS

Little did we know in November 2005, when we first featured this Farrow & Ball hued Shaker-style kitchen (above, 4) that we'd be seeing a host of similarly pared-back and hand-painted kitchens, such as the country kitchen which featured in July 2004 (2). We've also enjoyed seeing pattern moving into kitchens, with the 'Prints Charming' feature from this year (spread 1). One of our favourite kitchens, which was published in the December 2013 issue was designed by Jamie Blake (3), takes the simple eat-in kitchen to new levels of cutting-edge Scandi chic.



ALL THE BLUES

A certain sophisticated blue palette has run through the issues over the years, from the painted kitchen that featured in the July 2004 issue (*opposite page, 2*) to our New Year's party issue in 2011 (*9*) to the most up-to-date kitchens and bedrooms featured (*above 7, 5*). A Pop Art-inspired bedroom featured on the cover of an earlier issue (*6*), while Philippe Starck revealed his new Starck by Warendorf kitchen for our newly relaunched March 2010 issue (*left, 8*). Above far left, May 2013 and we interview Tom Aikens for our pro chef slot and cue March 2014 and it's Rachel Khoo.



CELEBRITY SPLASH

This glossy glass sink by Roundhouse which was featured in an older issue (*spread 4*) to the lacquered cabinet at Pinch (*5*) from a recent feature on freestanding furniture, shows that a touch of red will always made an impact on any space. In an earlier issue, fashion designer Ben de Lisi's home certainly showed a penchant for dramatic pops of the colour (*above, 2*), while in March 2011 a lookalike Angelina Jolie in a sleek red dress cut a dash on the cover and in a tongue-in-cheek centrefold to mark the Oscars (*3*). To this day, red still shines through (*7*). Meanwhile, a warm and autumnal shoot from an earlier issue (*below, 6*) contrasts with a similar wintry themed shoot above for February 2014 (*above, 1*).





Your kitchen's potential. Explored. Explained. Experienced.

For those who demand perfection,
a range that delivers it.



The Miele Generation 6000 Series. A range of built-in cooking appliances designed to deliver the results your passion deserves. It all begins with a Taste for Design consultation. Enjoy the specialist tailored advice to make Miele part of your plans. Explore our ranges. Learn how to get the very best from appliances that perfectly suit the way you cook. And then sample the Miele difference over a delicious lunch. Truly an experience to relish.

Reserve your Taste for Design consultation at our Miele London Gallery or Miele Experience Centre, Abingdon, Oxfordshire. Two free places are available by redeeming voucher code **TFD24FREE** when you reserve your place at: miele.co.uk/tastefordesign

Gallery

15/19 Cavendish Place
London W1G 0QE

Experience Centre

Fairacres
Marcham Road
Abingdon OX14 1TW



Miele
IMMER BESSER



BATHING BEAUTIES

Sir James Dyson picks his favourite gadgets in January 2012 (above, 1) and in an earlier issue (3) we see the freestanding bath coming to the fore which is something that's still a story a few years later (5, 7) and even today (2). A muted pastel palette has always run through our magazine and you can see this in many of our issues, from the beginning to current issues (2, 4, 6, 8).





Timeless design. Made to be efficient.

SMEG CLASSIC OVEN SF6390X, ENERGY RATING A.

SMEG UK LTD. 3A Park Square, Milton Park, Abingdon, Oxon, OX14 4RN
Info Line 0844 5570070 - www.smeguk.com - customerservice@smeguk.com



HANDCRAFTED IN COLCHESTER, ENGLAND

DAVONPORT

Naturally Distinctive Interiors

davenport.com

25
YEAR
GUARANTEE



Visit your nearest showroom in the south of England to experience the difference.
To request a portfolio or speak to a designer: 0845 468 0025



Bring in the new

Kitchens have changed dramatically in the last 21 years. **Amelia Thorpe** looks back at the high (and low) points, and asks the experts for their thoughts and insights into the future

WOOD EFFECT

Right The Provence kitchen from Mark Wilkinson represents the trends of the '90s. **Below** The NE – Brittain 13 kitchen is a bespoke mixture of the New England style of furniture and the Milan Handle. Kitchens from Mark Wilkinson start from £35,000



1994



2015

Now that kitchens are 'living rooms in which you cook', according to renowned designer Johnny Grey, the days of finding the pinny-clad housewife in a galley kitchen, dishing up onto the hostess trolley before wheeling it into a dining room, are thankfully long gone. So too, are dinner parties in which the 'hostess with the mostest' spent most of the evening shut off from a gathering of guests, preparing something special, usually moulded into a ring or adorned with glacé cherries or mayonnaise (though fortunately, not usually together).

'Our busy lifestyles have fuelled the need to create a larger, informal room, where we can spend time and relax with family and friends,' says Richard Moore, design director at Martin Moore. Offspring are no longer 'seen and not heard'; these days, more parents want to create a cosy family space where they can be with their children while preparing dinner. Add to that the enthusiasm for the rise of celebrity chefs and interest in food, more of us are cooking and entertaining at home, albeit in a more relaxed and informal style than our parents.

This means that kitchens are increasingly regarded as the hub of the home, the space where we choose to spend most of our time. No longer just a place to cook and wash up, kitchens of today incorporate informal dining bars, drinks stations, appliance garages, large dining tables, home offices and zones to relax, chat and watch TV. If space permits, sliding folding doors to the garden are also part of the mix, designed to create a seamless indoor-outdoor space in warmer months.

The demand for open-plan designs doesn't just mean larger layouts. 'We want to keep as much of their function out of view,' says Simon Richmond, managing director at Poggenpohl UK. 'Now we have built-in appliances, hidden breakfast cabinets, handleless cupboards and drawers to hide a multitude of different storage options.'

Think back to the early 90s, just before this magazine launched, and we were still emerging from our love affair with period pastiche and ornate Victoriana (from barley twist pilasters to kitchen curtains with swags and tails) and rustic country style (garlands of dried hops and flowers, wicker baskets and more stippling, rag rolling, marbling and distressing than you probably care to remember). 'Gone are the days of fishtail fretwork, nailed pine drawers and stencilled patterns on »

Timeline

Pre-1920s

Kitchen dressers, pantry cupboards and cook's tables were staples during this time period

1926 The first fitted kitchen sees the light of day. The landmark Frankfurt kitchen was designed as a model of efficiency by Austrian architect Margarete Schütte-Lihotzky for architect Ernst May's social housing project in Germany

1940s The English Rose kitchen was said to provide 'the maximum convenience and economy of space' and was one of the first modular kitchens in Europe. It was made from aluminium, in the same factories that produced the nose cones of Spitfires

1950s & 1960s

The clamour for modernity post-war encouraged the growth of the modular laminate kitchens – think Formica cabinets and wall units with sliding frosted glass panels

1960 SieMatic was the first to launch a completely built-in kitchen, the SieMatic 6006, which is believed to be the first 'handleless' kitchen with an integrated strip handle



door fronts,' says Laurence Pidgeon, director at Laurence Pidgeon. In its place – and most likely kick-started by retailers, such as Ikea in 1996 with its 'Chuck Out Chintz' campaign – has come a more streamlined aesthetic in our kitchens, which distances itself from the clutter and over-the-top embellishment of the past.

So, just as we're looking away from the main supermarket giants to discover the value of local food, in our kitchens we're enjoying a pared-back look that celebrates individuality. Industrial designs in worn materials that shine with beauty in utility, sleek schemes in glass and steel that highlight the precision of engineering, timeless classic furniture that set a restful mood, light fittings and taps in burnished metals that introduce warmth... they are all ways to make the room your own. But however super-size the kitchen, however high-tech its finish, Richard Moore reminds us of the key reason for good design and careful thought over your new room. 'Family and friends congregating over food is the heart of a good kitchen,' he says. **CKBB**

CLASSIC DESIGN

Above A design from the late '90s, this is a Classic hand-painted, bespoke kitchen from Roundhouse

COLOUR POP

Below The Poggenpohl Dimension 75 kitchen, launched in the '80s

PENCHANT FOR PAINT

Below right Martin Moore's English hand-painted range launched in the 1980s



TREND WATCH

FIVE FOR-THE-BETTER IDEAS FOR THE FUTURE

MATERIAL MIX New digital developments have brought us porcelain tiles and engineered surfaces that oh-so-realistically replicate natural stone and timber, with the added benefit of ultra-durability. We are also seeing worktops, splashbacks and cabinetry door fronts in materials with unique textures and finishes, such as high performance ceramics and ultra-compact materials like Dekton.

TOP TAPS 'Revolutionary systems are slowly replacing the traditional monobloc mixer,' says David Cole, sales director at Perrin & Rowe. Look out for the latest all-in-one taps, which can offer boiled, filtered, chilled and sparkling water, as well as regular hot and cold, all from one tap.

ENERGY EFFICIENCY Not just in appliances, but also in lighting, with the rise of excellent quality LEDs and cabinetry produced in advanced factories that are much more environmentally responsible. Roundhouse, for example, uses FSC-accredited, sustainable timber and operates from a factory which is now almost carbon neutral.

SPACE SOLUTIONS Better storage systems, clever appliances and built-in lighting make cooking (and clearing up) quicker, easier and more enjoyable. Pressure on space, an ageing population and the growth in multi-generational households will encourage more developments, as Laurence Pidgeon suggests: 'Kitchens will have to be more discreet and integral in appearance, and as well designed and as functional as possible.'

TECHNOLOGY TALKS We've already started to see the integration of technology into the kitchen, with built-in TVs, iPad and smartphone docking stations, smart appliances and lighting control systems. 'There will be a need to use resources more efficiently, to save time, to make things easier, and to be more flexible, and technology is sure to play a part in that,' says Bernard Otulakowski, managing director at SieMatic UK.

Mid 1970s to 1980s

Mark Wilkinson produces his English Country Kitchen in reclaimed old pine, Clive Christian launches the Classic Victorian cream painted kitchen and Smallbone of Devizes popularises the trend for stippled and dragged paint finishes with its Original Hand Painted collection

1982 Poggenpohl's Dimension 75 kitchen launches, teaming a glossy bright red finish with a handleless design

1994 Johnny Grey publishes *The Art of Kitchen Design*, and starts developing the concept of 'tailored spaces' to work with multi-purpose rooms. The island begins to dominate to combine prep and social spaces

1994 Sees the launch of this magazine - one of Britain's first specialist kitchens magazine.

1996 TV's popular *Changing Rooms* introduces a new fashion for interior overhauls

2000s Modern and minimalist kitchen styles, with pared back detailing and handleless features, takes off, perhaps a reaction to the frivolity and excess of the earlier decades? Black granite worktops are positively de rigueur. Technology starts making an appearance in the kitchen with built-in TVs alongside electric lift-up cabinets

2015 Kitchens are now expected to function harmoniously as part of an integrated living environment

mowlem&co.

Inspirational Furniture

**HARROGATE SHOWROOM
OPENING SOON**
ENQUIRIES ON 0191 257 6112

LONDON
020 7731 4997

KNUTSFORD
01565 754 547

NEWCASTLE
0191 257 6112

EDINBURGH
0131 523 0477

www.mowlemandco.com

RAFA NADAL

DEKTON. UNLIMITED.

INDOOR & OUTDOOR SURFACES

COLOUR AURA NATURAL Collection

In order to become the number one in the world
you have to play unlimited, you have to win
on all surfaces indoors and out.

For this reason, Dekton aspires to always be at the edge
It is the number one option for indoor kitchens and bathrooms
and outdoor surfaces of all kinds.
Its physical features make it resistant, durable, aesthetic and versatile.

DEKTON IS UNLIMITED.

HIGHLY SCRATCH-RESISTANT
RESISTANT TO STAINS
MAXIMUM RESISTANCE TO FIRE AND HEAT



DEKTON®
designed by **COSENTINO**

COSENTINO UK- CENTRAL OFFICES AND LONDON CENTRE
Unit 10 Bartley Point/ Osborn Way/ Hook/ Hampshire/ RG27 9GX/ HQ: info.uk@cosentino.com

COSENTINO PATROCINADOR OFICIAL
RAFA NADAL
ACADEMY



HOOVER

In 1952 a Hoover electric washing machine (*left*) washed clothes more efficiently due to the 'pulsator' in the side of the tub that swirls soapy water through the fabric. Today the brand has launched a new Wi-Fi enabled appliance collection called Wizard. Rated A+++ for energy, the washing machine (*right*) is part of a complete range that can be controlled and monitored via an app on your mobile or tablet. Priced around £450

Then & NOW

How times have changed... we take a look at some of the appliance world's most iconic brands to see how their technologies have evolved over the years

FEATURE HAYLEY GILBERT



DUALIT

In 1946 Dualit patented its flip-sided toaster. Today the company celebrates its 70 year anniversary, and continues to keep up-to-date with new trends, such as the Copper finish (shown right). The Classic toaster is hand-built by the same person from start to finish in the factory in West Sussex and features the assembler's name on the base plate. The toaster costs £199 and the kettle, £130



'An awareness of the importance of energy efficiency has had a huge effect on the appliance market, ensuring that inefficient appliances have pretty much become a thing of the past'

Craig Davies, Managing director, Sub-Zero & Wolf UK

As technology has advanced over the last 50 years, so has the role of appliances in the kitchen, and it is these factors that have led to a raft of new generation products that save time and energy while elevating the art of cooking, cooling and cleaning with ease.

Hoover

The ethos of this company changes as our lifestyles evolve, as Steve Macdonald, marketing director of freestanding at Hoover Candy UK explains. 'Whereas consumers once set aside a weekly washing day, our latest appliances have allowed laundry to fit in around our now hectic modern lifestyles. Hoover, for example, has been responsible for increasing the capacity of household appliances to save valuable time for consumers. We were also the first to introduce the All in One wash, which allows you to wash coloured fabrics along with

whites in the same wash without the risk of colours running.'

The brand has also recently launched a variety of market firsts, with its 59 minute rapid wash and the launch of the UK's first family of Wi-Fi enabled appliances, Hoover Wizard. 'The revolutionary product line allows you to have a fully connected kitchen that can be controlled remotely,' adds Steve. 'It includes an oven, hob, hood, fridge-freezer and a selection of washing machines and dishwashers. This really is a glimpse into the future of appliances and we predict that by the year 2017, all of our models will be controllable via Wi-Fi.'

Dualit

This iconic brand was founded in 1945 under the name Dualit Works and early designs included a stainless steel fire screen, an onion top and tail machine plus a patented cocktail shaker and mixer for custards and puddings. Its first successful product however was the flip-sided toaster and in 1952, the company designed and engineered a commercial six-slice



AGA

Above A New Standard AGA from the 1950s. This model remained in production until 1972. Today, AGA cookers are fully programmable. Shown on the right is a 3-oven AGA Total Control in Pearl Ashes, from £9,775 for the gas and electric models. The hotplates and ovens can be individually controlled and turned on manually when needed. There's also a remote control handset to programme the ovens to come on automatically



LAURA JAMES
AGA BRAND
AMBASSADOR

What were the origins of the iconic AGA? The AGA was invented in 1922 by Dr Gustaf Dalén, a blind Nobel Prize-winning Swedish physicist. He was recovering at home after an industrial accident and realised the difficulties his wife had cooking on their basic stove. It was logical to Dalén that he should apply his scientific thinking to the design of a better cooker. The AGA came here in 1929, going on to become a kitchen icon.

Which features and functions did the first cookers offer consumers?

Initially, the cast-iron AGA cooker ran on solid fuel and was on all the time. Domestic models usually had two ovens, one for roasting, the other for

simmering. There was also a boiling plate and a simmering plate, with each set at a constant temperature. The AGA cooker has always relied on radiant heat cooking. Rather than blasting food with direct drying heat, it is cooked gently with heat radiating from the walls, floor and roof of the ovens. This ensures that the flavour, moisture and goodness are locked in.

How has this evolved to the present day?

The beauty of the AGA cooker lies in its simplicity and today every model still uses radiant heat cooking from cast-iron ovens. Modern day innovations have centred on managing energy use and improving flexibility. Contemporary models can be turned on and off as you

need them and there is even one you can programme remotely via a smartphone app. They range from the 60cm AGA City60 through to 5-oven models and, while the original AGA was only available in cream, there's now a choice of 14 colours.

What do you predict for the future? The AGA team will build on recent innovations and, as lifestyles and consumer needs change, the cooker will continue to evolve to remain as relevant for the time as it was on its invention. The latest technology will be used to guarantee efficient energy use. What we believe is set to remain constant, however, is the AGA cooker's classic good looks, it is a kitchen icon that is known the world over.

Q&A



SMEG

After launching its first range cooker back in 1948, almost 70 years later the newest model features three ovens and an induction top. The SY931 is a dual fuel design available in stainless steel or black gloss with nine functions, including Circulaire with an upper and lower element that works like a rotisserie. It also has an air cooling system for added safety, four cooking levels and closed door grilling. It's £1,699



toaster with built-in timer, the first of its kind, which bears a striking resemblance to the toaster we know today. In 2014, Dualit introduced a range of new appliances including a repairable Classic kettle, a new Copper finish for both the Classic toaster and kettle, as well as patented tea capsules.

Smeg

Renowned across the globe for its retro-style refrigeration, it may surprise you to know that the Smeg brand has been manufacturing range cookers since 1948, and many of the models have been inspired by the very first Elizabeth design. 'One of the next big innovations was a front-loader washing machine,' explains Joan Fraser, who is product development and training manager, 'which proved how innovative and cutting edge Smeg really were, as at the time most washing machines were twin tubs or top loaders.'

By the 1970s, they were producing a 14 place setting dishwasher, which was unheard of at the time, going

on to launch the first built-in cooker and split-level hob in Europe during the 1980s. In 1997 Smeg launched its retro FAB fridge design in red, cream and 50s-inspired pastel shades, and cream is still its best-selling colour today. 'Smeg continues to push the boundaries of design and technology,' adds Joan. 'Collaborations with architects and designers keep things fresh, and the recent launch of the small domestic appliances ranges will keep the innovations coming.'

Sub-Zero & Wolf

In 1943, Westye F. Bakke built the first freestanding freezer in the basement of his US Madison home and then founded the Sub-Zero Freezer Company two years later. The company went on to develop their built-in fridge in the mid 50s, and in the year 2000 they acquired the domestic appliance line of the Wolf Range Corporation, which manufactures professional-style range cookers and grills. 'We've all become savvier, especially in the last eight to 10



SUB-ZERO

For iconic American-style refrigeration and professional range cooking, Sub-Zero & Wolf are masters of commercial and innovative technology. The ICB648PRO fridge-freezer costs £23,880 and boasts a generous 476/298L capacity, while the ICBDF606CG dual fuel range has two 111L ovens and is priced £20,256. It also comes with a griddle/teppanyaki, charbroiler, delayed start and timed cook features

years,' explains Craig Davies, managing director at Sub-Zero & Wolf UK. 'Demand for clever features has become more popular. Compatibility with home automation systems is a further evolution, allowing homeowners to manage their appliances remotely, and from any part of the world.'

The Classic built-in side-by-side fridge-freezer was Sub-Zero's hero product 20 years ago and is still popular today. 'Our New Generation range of integrated refrigeration features NASA technology Air Purification, industry-first internal water dispensers and a dual compressor system,' says Craig.

For the Wolf brand, the Dual Fuel range offers professional cooking capabilities, while the new M Series oven with its Dual Verticross Convection system ensures faster pre-heat times through improved heat saturation and distribution. 'Wolf's automatic Gourmet mode tells you the proper rack position, sets the right cooking mode and even adjusts temperature on its own. You can just sit back and wait for a perfectly prepared dish.' **EKBB**



Future of DESIGN

The world of kitchen design is continually evolving, resulting in a consistent stream of new and exciting ideas and products. But what do the next 21 years hold? We ask the top designers and tastemakers to give us their thoughts

1 **TERENCE CONRAN** DESIGNER AND ENTREPRENEUR

'In my opinion open-plan kitchens are here to stay. In many ways they embody the spirit of modernism and relaxed, easy living; I find open-plan spaces welcoming, allowing a natural flow of activity.'



6 **SEAN COCHRANE** FOUNDER AND CREATIVE DIRECTOR OF COCHRANE DESIGN

'In terms of my favourite design from the last 20 years, I would have to say I'm very fond of The Connaught Bar in London's Mayfair which I think is some of architect David Collins' best work. The level of detail and multiple layers show a depth of consideration I truly admire. Thinking about the way kitchens have evolved, I wouldn't say that it's done a full circle but more of a half circle. Formal living and designated rooms have been replaced by very open-plan living. Larger open kitchens with islands you can sit on are generally well used.'



2 **MARK WILKINSON** KITCHEN DESIGNER

'What's to come? Well, for sure there's a new generation of intelligent appliances and intuitive interrelated kitchens, the exact style of which, by the end of the next two decades is waiting for the next instalment... What is a definite is that kitchens of the future will represent the changes in national and global realities.'

3 **SAM HOOD** CREATIVE DIRECTOR AND OWNER OF AMARA

'With social media, the design industry is evolving into a far more accessible and social space. Now designers and artists are influenced by various elements, from architecture, food, fashion and travel.'



The Connaught Bar, Mayfair, London

4 **'IN THE FUTURE I THINK MORE DESIGNERS WILL BE WORKING FOR THEMSELVES INDEPENDENTLY MOVING FORWARD'** LEE BROOM, PRODUCT AND INTERIOR DESIGNER

5 **EMMA BRIDGEWATER** POTTERY DESIGNER

'The future sees increasingly bespoke designs emanating from 3D printers and patterns of a complexity that only computers can make possible. But all the programmes and digital tricks in the book cannot come up with ideas, and real design means real ideas. So designers of the future will still need to travel, and look at pictures. They will need to read novels and look at the world around them to synthesise those experiences and turn them into ideas whether for plates, tables, sheets or anything else.'

7 **EMMA SIMS-HILDITCH**

DIRECTOR AT SIMS HILDITCH DESIGN PRACTICE

'There is definitely a move towards design being ever more centred around individual lifestyles. We all want to get the most out of our space and part of that is designing for a variety of purposes. Sustainability and environmental impact are also hugely important for design now'

8 MORTEN BO JENSEN

CHIEF DESIGNER AT VIPP

'Interestingly, I feel design is moving in two directions. On the one hand, we're experiencing a shift towards more multi-directional design, a concept that allows for many new and diverse approaches to what design really is. On the other, I feel we are still in the slump of trends and a 'use and throw away' culture, where everything depends on the look of the hour and expendable design. So, I hope we are also moving towards a more critical attitude with both manufacturers and consumers, where we start to see more attitude in design with a view that design should matter and that the things we surrounds ourselves with should have real, long-term value.'



Silo is a zero waste restaurant based in Brighton. The eco-conscious interior was designed by husband and wife team Baines & Fricker

9



'WE LIVE IN AN 'ANYTHING GOES' WORLD, AND PEOPLE ARE MUCH MORE FEARLESS. IT'S A MIX OF HIGH WITH LOW, NEW WITH VINTAGE AND HYPER-MODERN WITH SUPER RUSTIC'

JONATHAN ADLER, POTTER AND DESIGNER

10 NINA CAMPBELL

INTERIOR DESIGNER

'The future of design will likely continue to become more eclectic and hopefully cold, grey interiors will be a thing of the past. I think fresher colours are coming back in. Grey can be mixed but it needs to have a punch of colour with it. Coral is very joyous.'

11 PAUL A. YOUNG

CHOCOLATIER

'The food industry is now unrecognisable in nearly every way. It's so colourful now with creative, innovative, daring chefs creating food we would never have imagined 20 years ago. Back then classic French and reinvented British food were being celebrated and although we still enjoy these cuisines, we've taken those core elements and techniques and using them with new vision and optimism.'

12 SPANDANA GOPAL

FOUNDER & CREATIVE DIRECTOR OF TIPOI

'While my favourite 'time' in design was the 1920s – particularly when Marcel Breuer used tubular metal to make furniture – the Cantilever chair and the Wassily chair are still among my favourite chairs today. In recent times it is harder to find objects of energy that really push the boundaries of manufacturing. My recent favourite is the Hay Little Nobody Chair by Komplot Design, Boris Berlin & Poul Christiansen. It's a clever felt chair of recycled plastic water bottles using a technique borrowed from the car industry.'

Hay Little Nobody chair, £109, The Lollipop Shoppe



13 OLLIE DABBOUS

OWNER & HEAD CHEF AT DABBOUS AND BARNYARD

'Over the last 20 years trends have changed in the food industry, from modern British cooking, fusion, pan-Asian, steak houses and street food, every genre imaginable has had its 15 minutes. As the quality of the produce in Britain improves, I would like to see a more product-driven style of cooking, where local produce is sympathetically cooked with a minimum of fuss. The Pig in Brockenhurst is a great example of this. In London, so many people are looking to do something different and in doing so ultimately look the same, but doing something simple, local and good value will always be more compelling and emotive than innovation.'

14 MARGO SELBY

TEXTILE DESIGNER

'Thinking about the future of design, I feel people are becoming bolder with their choices and are able to use their imagination when it comes to styling their kitchen spaces. People are doing this by adding colour and texture while investing in quality, seeing their purchases as lifetime investments.'



15 STEPHANIE TUDOR

BESPOKE SURFACE DESIGNER FOR THE NEW CRAFTSMEN

'Multifunctional design and interchangeable spaces will become more important, to suit our modern lives and smaller homes. I would love to see the demand for craftsmanship and sustainability continue to grow. An incredible example of design is Thomas Heatherwick's 'Seed Cathedral' for the UK Pavilion in Shanghai. The ingenious structure celebrates the vast seed collection, creating a captivating calm space in amongst the busy city, while highlighting the relationship between nature and modern life.'

16 TORI MURPHY

TEXTILE DESIGNER

'I think design is becoming more pared back. A simpler lifestyle and an aesthetic based on good quality things, whether it be design, fashion or food, seems to be where we are heading. As things are stripped back, the story behind them can shine and so the importance of craftsmanship and provenance comes back to the forefront.'



Textiles from The Wild Coast collection by Tori Murphy start from £15



Fondation Louis Vuitton, designed by American architect Frank Gehry

20 SOPHIE CONRAN

INTERIOR DESIGNER, COOK & AUTHOR

'The trends for glossy surfaces, lots of stainless steel and hospital light kitchens are thankfully changing, and we are seeing many more homely, family-friendly kitchens with a comfortable and cosy aesthetic.'



21 ROSIE BIRKETT

FOOD WRITER AND STYLIST

'The food industry has become much more informal and all the better for it. Chefs who have grown up cooking in formal restaurants have responded to the need for more affordable, approachable dining and done their own thing, creating comfortable, fun and welcoming environments where people can get top notch food at a fair price. Food has gone full circle – from nouvelle to modernist cuisine, we're now seeing a move towards ancient and historic techniques like fermenting and cooking over fire. Eating out and cooking have also become something that people want to do as a cultural activity.'



17 TARA BERNERD

FOUNDER OF INTERIOR ARCHITECTURAL PRACTICE
TARA BERNERD & PARTNERS

'I have been impacted by the work of Zaha Hadid and her 'outside the box' genius, Andre Balazs seducing us all with open-plan kitchens and club-like ambience and Frank Gehry's Fondation Louis Vuitton – his very latest arrival in Paris. Design lives, and be it one chair or one building, the significance is in energy and detail. Luxury has morphed and evolved. Today, luxury is about creating practical, intelligent design and spaces combined with a perhaps more edgy touch, yet still achieving an atmospheric feel.'

18 'THERE HAVE BEEN SOME EXCEPTIONAL DESIGNS IN EVERY FIELD FROM FASHION, INTERIORS, ARCHITECTURE AND FURNITURE OVER THE PAST 20 YEARS. A FAVOURITE OF MINE HAS BEEN THE CHARLES EAMES CHAIR'

KELLY HOPPEN, INTERIOR DESIGNER

19 JAMIE TELFORD

DIRECTOR AT ROUNDHOUSE KITCHENS

'In the future the kitchen industry will have to be much more environmentally aware, and more importance will be given to kitchens that are built to last and don't go into landfill after a few years. Appliances will continue to be developed with energy saving in mind. The industry will also become much more professional, requiring people of high calibre to accommodate all the knowledge needed to design and manufacture.'



Vitra DSW chair by Charles and Ray Eames, £332, from Heal's



MAKING YOUR MORNINGS EASIER SINCE 1917

We know how hard it is getting up every morning. That's why we've spent almost 100 years creating inspiring bathroom spaces that are exceptionally practical, to ensure your mornings are easier and more comfortable than ever.

See our full range of furniture at uk.roca.com

Roca

WITH YOU SINCE 1917

1



2



3



4

5



Icons of style

Standing the test of time, here are 21 favourite design items for your home

COMPILED BY CLARISSA WILLS



6



7



8



9



10

1 Best known for his metallic lighting as well as his S, Y and diamond chairs, Tom Dixon is one of Britain's best loved designers of the day. Decanter, £95, heals.co.uk

2 Rory Dobner's signature black illustrated plates are future design classics. From £36 per plate, at Liberty. liberty.co.uk

3 Described as 'Britain's greatest post-war product designer', David Mellor is particularly known for his metalwork. Pride cutlery, £125 for six-piece place setting. davidmellordesign.com

4 Roberts Radio has been in the market for over 80 years, with even the Queen

a proud consumer of its retro appearance. Revival radio, from £160, johnlewis.com

5 The CH24 Wishbone chair was designed by Hans J Wegner in 1949 and has been an iconic piece since. It's £500, from Carl Hansen & Son. carlhansen.com

6 Smeg started as a family-run business in the 1950s making cookers, but they're now best known for the retro-look FAB28 fridge. Launched in 1997, it's still a favourite. It's £979. smeguk.com

7 Lee Broom continues to add to his collection of world famous designs. We love the stunning and ornamental Clear

Crystal Bulb chandelier. It's priced from £1,045. leebroomstore.com

8 From a small potter's workshop in Burgundy in the 1850s to modern day international acclaim, Emile Henry's ceramics deserve pride of place in a kitchen. £49, from Houseology. houseology.com

9 The simple shape of this Italian coffee maker has lasted 80 years. The Moka Express by Bialetti is available at John Lewis, from £28. johnlewis.com

10 Quirky yet classic, Bethan Gray's Brogue leather-topped side table is available from £1,045. harrods.com

11 Albert Alessi asked Philippe Starck to design a tray and instead he came up with the Juicy Salif Citrus Squeezer. A kitchen classic since the 1990s, it's £40 at alessi.com

12 The KitchenAid stand mixer was invented by Herbert Johnson in 1919 and by 1994 it became available in a range of new colours. It's now a much-imitated and timeless design. The 4.8l stand mixer is from £386 at johnlewis.com

13 Every kitchen needs Muuto Toss Around salad servers. The simple design is a minimalist yet iconic look. From around £32. muuto.com

14 In 1939 Holger Nielsen designed a bin for his wife for her beauty salon; the mechanical design received so much attention from customers it led to Nielsen creating his own business. Now Vipp make kitchens, bathrooms and even nature retreats. And it all started with this classic bin... From £235, vipp.com

15 After being frustrated with his old vacuum cleaner, James Dyson spent years inventing the first bagless vacuum. In 1993 the Dyson 'Dual Cyclone' was created. It's around £299, dyson.co.uk

16 Iittala's soft-shaped and stackable glasses are good for any occasion, and look great in your kitchen cabinet too. From around £33, abodeliving.co.uk

17 Mason Cash in Derbyshire have been producing bowls since 1800s, with this mixing bowl one of their most iconic and recognisable kitchen items today. It starts from £10. johnlewis.com

18 The Mondaine wall clock was first designed in 1940s by Hans Hilfiker, an employee of the Federal Swiss Railways. Modern and timeless, they're now symbols of precision time keeping. Priced at £159, from ltmuseumshop.co.uk

19 The design of this classic wooden door stop from Ancient Industries has never needed to be improved upon. It's £4. ancientindustries.co.uk

20 The first Anglepoise lamp was created in 1932 by car designer, George Carwardine. He created the arm of the lamp to be similar to the human arm, allowing a variety of different positions with joints and springs. The distinctive appearance is a timeless feature. From £200. anglepoise.com

21 One of Britain's most influential furniture designers, Robin Day produced understated and functional creations for over 70 years. Avian AV3 sofa, £2,890. twentytwentyone.com



11



12



13



14



15

16



17



18



19



20



'A designer knows he has achieved perfection not when there is nothing left to add, but when there is nothing left to take away'

Antoine de Saint-Exupéry, author and thinker

21



Win

£5,000 WORTH OF BATHROOM
PRODUCTS FROM KERAMAG DESIGN





When it comes to the bathroom, we would all like to try and create a stylish space to relax in. If you're looking to update your scheme with some luxurious and quality products then you're in luck, as **EKBB** has teamed up with Keramag Design to give you the chance to win a brand new bathroom set-up.

A collaboration with designer Robin Platt in his debut collection for Keramag Design has resulted in the stunning Xeno² collection, which offers contemporary products with geometrically designed flat surfaces in a soft minimalist style. Platt has worked with industrial ceramics for almost 15 years, won many awards and has various ceramic designs in the V&A Museum in London. With experience in both product and furniture

design, creating a bathroom series has been like a natural progression. This collection offers a comprehensive range of washbasins, hand rinse basins, Rimfree[®] toilets, bidet, mirrors and sleek furniture for a sumptuous bathroom look that can complete any scheme.

One lucky winner will receive the amazing prizes of an asymmetrical washbasin, one-drawer vanity unit, tall cabinet, two-drawer side cabinet, illuminated mirror, wall-hung toilet, concealed cistern dual flush 4/2.6l and flush plate, which is altogether worth just over £5,000! To be in with a chance of winning a whole new bathroom, head over to our website now and enter.

For more information call 0344 371 5062 or visit keramagdesign.com

For your chance to win, answer the following question:

WHAT IS THE NAME OF THE KERAMAG DESIGN BATHROOM COLLECTION?

A Xeno¹ **B** Zeno² **C** Xeno²

TO ENTER VISIT

ekbbmagazine.co.uk

and click on the 'Competitions' option.

RULES OF ENTRY: 1) Competition closes at midnight on 31st October 2015. Winners will be notified after the closing date. 2) One winner will receive £5,000 worth of selected products from the Xeno² collection from Keramag Design. Mainland UK delivery is included. Installation is not included. Subject to availability, non transferable or refundable. 3) No cash alternative will be given. 4) Open to residents in the UK (mainland), over age of 18, except employees of Hubert Burda Media UK and Keramag Design. 5) Only one entry per person. 6) Winners must be willing to participate in publicity if required. 7) The editor's decision is final. Correspondence will not be entered into. 8) Winners are selected at random, from correct entries received, after the competition end date. 9) Hubert Burda Media UK or Keramag Design may use your details to advise of products and services. Details are occasionally available to vetted companies. For full terms and conditions visit ekbbmagazine.co.uk 10) Allow 8-10 weeks from selection to completion. 11) Reproduction of this competition, in whole or part, without written permission is prohibited. Hubert Burda Media UK reserves the right to prosecute offending parties.



KERAMAG
DESIGN



Point



Flow

Facet

Win

£1,000 WORTH OF TILES FROM THE HOUSE OF BRITISH CERAMIC TILE CONRAN COLLECTION

A truly British collection, Trace by Conran & Partners blends contemporary tile designs with an on-trend colour palette, which are designed and made here in the UK. We've teamed up with British Ceramic Tile to give three **ekbb** readers the chance to win £1,000 worth of tiles each, from a choice of three different ranges – Fractal, Linea and Tactile. So no matter whether you need to refresh your kitchen, bathroom or bedroom, there will be a design here that suits your needs.

Creating 3D shapes, the Fractal range (20x20cm) uses light to add a dynamic and textural quality to any room. 'Ridge' features soft peaks that reflect light, and 'Facet' has a geometric style surface that changes with light as you move around a room. Both of these tiles are available in five stunning shades; White, Black, Putty, Poise and Plum.

Inspired by nature with strong structures, the Linea range (25x50cm) features a neutral colour palette. 'Point' is inspired by traces of water, while 'Flow' takes its influence from the naturally occurring linear structures in nature. These tiles are available in White, Black, Smoke, Putty and Dusk.

Part of the Tactile range Hartland (50x50cm) is made up of small, angled squares influenced by the crystalline structure of mineral deposits. The contemporary tile design is available in Black, White, Putty, Dusk, Poise, Plum and Smoke. Each range also has a corresponding plain tile.

Head over to the **ekbb** website now and enter this competition for a chance to win.

For more information about House of British Ceramic Tile, please visit britishceramictile.com or call 01626 831391.

For your chance to win, answer the following question:

WHAT IS THE CONRAN & PARTNERS COLLECTION CALLED?

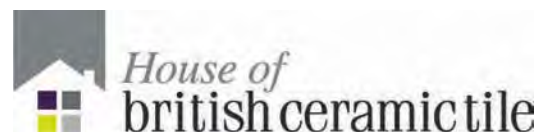
A Space **B** Trace **C** Lace

TO ENTER VISIT

ekbbmagazine.co.uk

and click on the 'Competitions' option.

RULES OF ENTRY: 1) Competition closes at midnight on 31st October 2015. Winners will be notified after the closing date. 2) Three winners will each receive £1,000 worth of tiles that can be chosen from the Trace by Conran & Partners collection. Mainland UK delivery is included. Installation is not included. Subject to availability, non transferable or refundable. 3) No cash alternative will be given. 4) Open to residents in the UK (mainland), over age of 18, except employees of Hubert Burda Media UK and British Ceramic Tile. 5) Only one entry per person. 6) Winners must be willing to participate in publicity if required. 7) The editor's decision is final. Correspondence will not be entered into. 8) Winners are selected at random, from correct entries received, after the competition end date. 9) Hubert Burda Media UK or British Ceramic Tile may use your details to advise of products and services. Details are occasionally available to vetted companies. For full terms and conditions visit ekbbmagazine.co.uk 10) Allow 8-10 weeks from selection to completion. 11) Reproduction of this competition, in whole or part, without written permission is prohibited. Hubert Burda Media UK reserves the right to prosecute offending parties.



The UK's first Wi-Fi connected kitchen **from Hoover**



The launch of the WizARD range of Wi-Fi appliances is backed by a major national consumer advertising campaign. For more information, please contact your local Hoover representative or call **01685 725572** or visit **www.hooverwizard.com**



GENERATION FUTURE

Design EDIT

A sneak peek at the forthcoming ideas in designer bathrooms and bedrooms, as well as what's trending for the new season

COMPILED BY EMMA FOALE

In the folds

We love the new look of this Origami range which was designed by Kelly Hoppen, and inspired by the Japanese art form. The stone composite range includes a countertop basin, from £1,734, freestanding basin, from £2,316, and the bath, from £8,254, all by apaiser collection

21
YEARS
EKBB

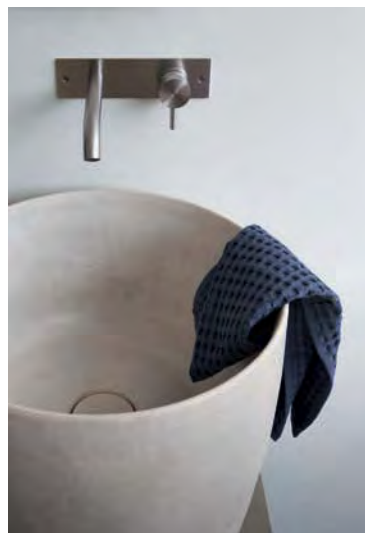


Get the feeling

Above Embracing the trend for 3D texture, the new TacTile from the Ted Baker collection is subtly eye-catching. It's available in a soft grey or classic matt white and priced from £35 per sq. m

Nothing to hide

Below Inspired by modern architecture, the cubic BetteLux Shape bath is something to behold. It's in three sizes with six frame colours, priced from £5,640 and available from late September



Timeless look

Beautifully handcrafted, the Japan washbasin from Rexa Design is a testament to how something that's lovingly made can stand the test of time. Designed by Monica Graffeo, it's made from Cocciopesto which is building material used in ancient Rome. It's a basin that blends into any natural scheme. From around £2,124.

Bathing

Whether we notice it or not, our daily routines are changing and adapting, particularly with technology which is continuously transforming how we spend our time in the bathroom. So now there's everything from touch sensitive taps to app-controlled systems for bathtubs. Design is also changing the look and feel of our bathing spaces. 'Sensory appeal has emerged as a worldwide trend', says Belinda Try, founder and executive director at luxury bath company, apaiser. She explains: 'Bathrooms are becoming part of the bedroom. They are stimulating places to unwind and no longer viewed as clinical and purely functional.' Materials chosen by interior designers are also being considered with texture and durability in mind. Also, and excitingly, inspiration and ideas are now being drawn from architecture and art from all over the world.





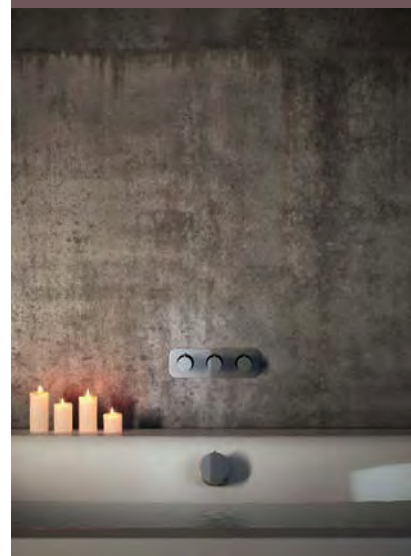
Tierras by Mutina is a new collection of tiles by Spanish designer Patricia Urquiola. Colour inspiration has been drawn from the Mediterranean as well as natural elements such as earth, terracotta, clay and lava. Available exclusively at Surface, the tiles start from £157 per sq. m



Trend for minimalism

New technology means there are more slimline options for your bathroom, keeping a streamlined look. The Tablet horizontal and vertical thermostatic valves from Vado have soft-turn handles and safe temperature control.

Top The Tablet vertical valve with all-flow function, £1,099 **Below** The Tablet horizontal valve, £825



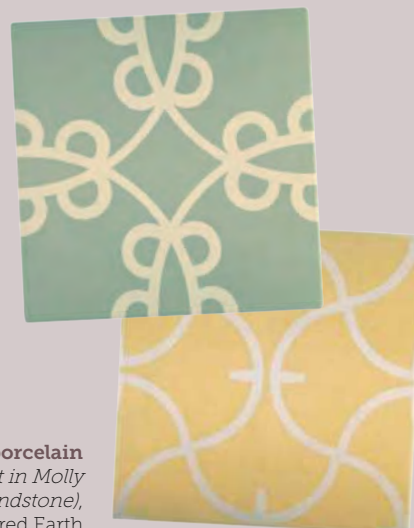
Tile trends

Designers are bringing a fresh look to tiles and playing with prints on different scales. Patterns that are used for wallpaper in the rest of the home are now creeping into the bathroom. Symmetrical patterns, multi-dimensional designs and on-trend colour palettes are changing the appearance of our

bathing spaces, making them feel less like stark and clinical spaces and more like a stylish and welcoming additions to your home. The natural colour palette is here to stay with soft shades including powder yellows and duck egg blues.

The Tricia Guild for Bisazza collection Charlottenberg (far left), £710 per sq. m, and Alexandria (left), £755 per sq. m

Neisha Crosland Tulia porcelain range (shown right in Molly Pebble and Maypole Sandstone), from £125 per sq. m, Fired Earth





Pan Style tap with gold spout and black body (above). Also available in chrome as well as a two-colour version. **Him single lever tap** (below). Both are designed by Ludovica + Roberto Palomba and they're due to be launched in spring 2016. Available from Zucchetti



Winning combination

Using mixed materials in the bathroom is very on-trend and it gives a look that is both modern and adaptable to change in tastes. The Xila handleless furniture from Boffi is shown here with a black granite stone top and old grey pinewood doors. The Pipe stainless mixers by Marcel Wanders have a red flower-shaped handle. Prices on application



'Brassware is becoming increasingly design-led, with fittings inspired by architecture. The future will see a growing trend for seamless fixtures and minimalist designs which prominently showcase the water cascades as a statement feature'

Elena Zucchetti, CEO of Zucchetti Kos Group

Tapping into the trends

When it comes to the design of bathroom fixtures and fittings, there's more emphasis on the experience we have when using them and making a feature of the flowing water. For example, the Dornbracht CL.1 (below) has a flow pattern that gently immerses your hands in 40 soft, individual jets of water, and handles are available with two different surface textures, inspired by architectural façades. Keep an eye out for sculptured shapes and metallic finishes which are turning taps and other fittings into talking points of the bathroom.



CL.1 Single-lever basin mixer in polished chrome designed by celebrated German duo, **Sieger Design** from £771, Dornbracht



Reflecting luxury

Hotel bathrooms have always set trends, but more and more they are becoming talking points outside of the interiors world too. Nowadays anyone with an instagram account can find inspiring ideas for creating the ultimate home sanctuary, and our attention was recently drawn to this luxurious bathroom within the Trump Towers complex in Pune, India. It features a customised basin, shower tray and bathtub in Duralight®, designed by Teuco in collaboration with Matteo Nunziati. Duralight® can be created in monobloc forms of any shape, size or thickness making it a versatile material for bespoke projects.

Light sleeper

Defined by its enveloping headboard and light base, the Bonaldo Basket Air bed is an example of contemporary luxury. Italian designer Mauro Lipparini is known for his 'natural minimalism' and that style comes through in this design which can be upholstered in fabric and leather. The headboard is available in two different sizes, plain or pleated (*as shown*). It's from £2,720 and available from Go Modern





Dressed to impress

Trends may come and go but we'll always wish for luxury and a touch of glamour in our bedrooms. For this reason we're admiring the Olympia dressing table by Slovenian designer Nika Zupanc for furniture brand Sé's Collection III. Shown here in glossy chic pink with acid iron legs, it has two offset intersecting circles and a straight central section that provide reflections from different angles. It's £7,218.



Walkings Breeze quilt cover set, from £108, Sheridan

Sleeping

The one room where we can all step out of our busy, plugged-in lifestyles, the bedroom has become more and more of a private sanctuary as well as a zone to switch off, relax and sleep. This explains our abiding desire for softer colours and natural materials in this room. This season we are also seeing accents of happier colours such as coral, pink and yellow along with geometric patterns and tactile textiles to add eye-catching detail. When it comes to luxury, it's definitely all about the bed. Tina Mahony, Director at contemporary furniture experts, Go Modern, says: 'Our new collection is pared-back in style; slim line bases, unfussy headboards and discreet, painted metal feet. Remember, minimalism never means a compromise on luxury. Removable covers for headboards for example, allow a choice of sumptuous fabrics or soft-leathers. Shape too is important, with over-sized 'enveloping' headboards currently a big trend.'

Artistic impression

Talking about the inspiration behind the beautiful hand-painted duvet covers in the new collection Jo Jaggs, Head of Design at Sheridan Australia, says: 'This season we explored the natural beauty of our lush and diverse homeland in Australia. From the tropical vibrancy of the north to the orchards of the south.'



A design emporium

Shopping inspiration can be found in all kinds of places, but when you can find one location that has a great edit of products from lighting and furniture to accessories and gifts it's always a bonus. Our latest find is the just-opened That Design Store in St. Albans, Hertfordshire. Step inside and there's a wealth of brilliant product ideas from our favourite brands such as Tom Dixon, Buster + Punch, Alessi, Iittala and Design House Stockholm. See thatdesignstore.co.uk



Play with pattern

Geometric prints are enjoying the limelight and they're satisfying our need for order and natural symmetry. We love the Tomy K range from Woven which brings energy and a burst of colour into any room. This Grecian brand was created by Tomy Karaiskos after he was commissioned by Ralph Lauren in 2011. From top to bottom: Geometrica IV, £45; Raspberry Sorbet, £62; Infinity cushion, £45.



Moooi Heracleum Small Big O by Bertjan Pot and Marcel Wanders, £5,075, from Chaplins

Light your way

Imaginative and creative, the direction that lighting design is going in is exciting us in many ways. Having always been a way to create drama in any interiors scheme, decorative bulbs are now all on show and pendant lighting is becoming bigger and bolder but in a sophisticated style. Opulent metallic hints such as copper and brass have become prominent accents which complement and add warmth to most schemes. 'Good lighting serves far more than just a functional purpose,' says Sophie Amini, designer at specialist company, Pooky. 'Decorative shades will add bursts of colour to a room, day or night.'



Copycat table lamps by Flos £400 each (finishes include copper, polished aluminium, black nickel or 24 carat gold electroplating) Chaplins

Left to right: The Antoinette and Trafalgar table lamps from £700 each, Pooky. Punched metal table lamp £178, Anthropologie



Destination style

Handpicked by Mr & Mrs Smith, we love the London Edition in Fitzrovia which features bedrooms that are styled by Toronto design firm Yabu Pushelberg. The interiors are crisp and cool and accessorised with cosy fur throws and walnut-hued furnishings. The One-Bedroom Suite with terrace has an inviting wrap-around outdoor space which lets in plenty of natural light. editionhotels.com

Contemporary edge

Standalone furniture pieces are key to creating a modern look as they are flexible and adaptable to various colour schemes and room layouts. The Scandinavian influence of whites and woods with simplicity of shape and style is very much at the forefront of trends looking forward. Embracing this style, the Joyce chest of drawers from Pinch are made from timber with a white lacquered casing. They're from £3,990



The soft touch

In the room where we seek comfort and refuge, grey has become the fashionable new neutral and it looks set to stay. It's worth noting that there are warm greys (yellow based) and cool greys (blue based). Add texture and layer sumptuous linens to create a comfortable and cosy feel. The Emily double bed is £299; Greek key rug in silver grey £460; Ceiling-armed brass Levin light, £240, all from John Lewis





Every Caple appliance combines intuitive technology, functional engineering and contemporary design, through and through.

design.living

Tel: 0117 938 1900 www.caple.co.uk  

Image: top left, clockwise: steam oven SO209SS, coffee machine CM471SS, two single multifunction ovens C2160, two warming drawers WMD1356SS

Technology

PARTY PLEASERS

Sing along to your favourite tunes with a wireless speaker that looks stylish and sounds good too

The Libratone Loop is shown here in the Petrol Blue wool cover, and is priced at £349

DESIGN-LED TECHNOLOGY • CHEF TOM KITCHIN • LATEST NEWS

TECHNOLOGY NEWS

TAKE CONTROL OF YOUR HOME
WITH THE LATEST INNOVATIONS

COMPILED BY LUCY MACDONALD

MIX IT UP

If you're looking for a new stand mixer, then the latest launch from AEG could be for you. The KM4100, shown in classic cream, has been added to the Ultramix™ range and offers a whole host of useful features.

It has a balloon whisk, flat beater and dough hook to help create a variety of dishes, plus 10 speed settings and two bowls which give a total volume of 7.7 litres. It's priced at £350.

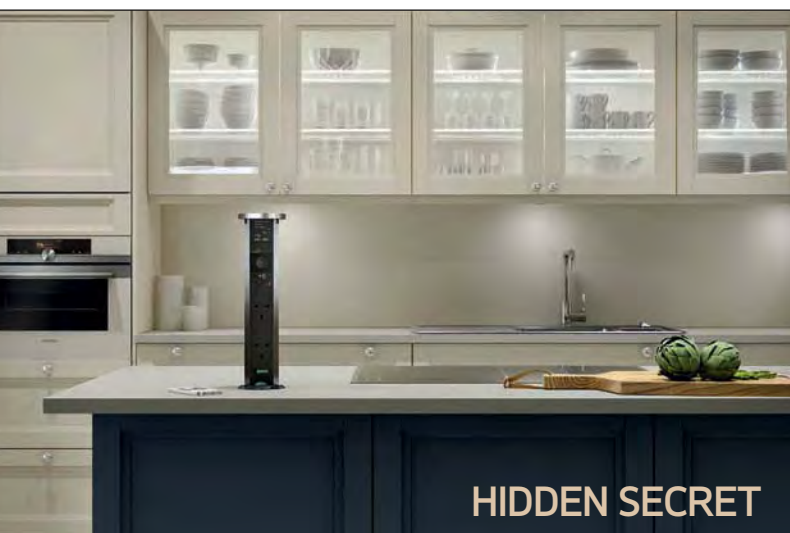
aeg.co.uk



Keeping cool

Maintain the quality of your food with the Whirlpool BSNF 8151 Supreme NoFrost combi fridge-freezer. Rated A+ for energy, it features 6th Sense® technology in the fridge, which uses electronic sensors to monitor and adapt the temperature and humidity to between 70-85%, to ensure that food stays fresher up to four times longer, when compared to other models. Priced at £450. whirlpool.co.uk

With the demands of modern life, we'd all rather that our household chores got done as efficiently as possible. Indesit aims to help with the launch of the EWD 81482 W UK MyTime washing machine, which completes six of the most common wash cycles in under an hour, to help free up more of your time. It also boasts an 8kg capacity, efficient A++ energy rating and 16 programmes. The price is £249. indesit.co.uk



HIDDEN SECRET

Sensio has released its first pull up SensioPod plug socket which incorporates a built-in Bluetooth speaker, so you can play music from your mobile wirelessly. The socket houses two plug sockets, 2W audio speaker with headphone jack and two USB ports for charging your phone. The handle has been designed to make it easy to pull the fitting up from a work surface. From £125. sensio.co.uk



TIME SAVER

Up in THE AIR

Italian cooker hood specialist Elica has unveiled Cirrus, its newest extractor model. This minimalist design is perfect over an island, and is operated via remote control for your convenience. Finished in white glass, it has two strip LED lighting, a maximum extraction rate of 475m³/h and a noise level of 60dB. Cirrus is £1,450. elica.co.uk.



Blend in STYLE

Smeg has now added the BLF01 blender to its collection of retro-style small appliances. This 800W model has four speed settings, a 1.5-litre jug and dedicated crush, smoothie and pulse functions. Choose from either cream, black, red, silver or pastel blue shades for a style statement on your worktop. Priced at £150. smeguk.com.



NEW SOUNDS

Audio brand Ruark has released two monochrome finishes to sit alongside the original walnut veneer design for its flagship R7 radiogram music system. There's the option of soft black or a white matt finish (*shown*). Features include an on-board Wi-Fi wireless network, Bluetooth functionality, CD player and DAB/DAB+/FM/Internet radio. The R7 costs £2,000. ruarkaudio.com.



Stay in control

Hive, a British Gas innovation, has recently unveiled its new thermostat product, Active Heating™ 2. With a fresh look created by designer Yves Béhar, this thermostat can control your heating and hot water via your phone or tablet if you wish, using the app. Not only that, you can also see temperature graphs, activate frost protection and switch it to holiday mode. For new Hive customers the price is £249 including installation. hivehome.com.



RELAXED BATHING

New from Teuco is DIVA, a range of whirlpools designed by Carlo Colombo. They are available in five different sizes and offer the brand's unique concealed jet system across all three hydrotherapy whirlpool types, which include basic, hydrosilence whirlpool, hydrosonic whirlpool. Shown above is the Top Hydroline model (180x110cm), which priced from around £6,924. teuco.com.

MY FAVOURITE KITCHEN APPLIANCE

Tom KITCHIN

The Michelin-starred chef chats to us about the success of his Edinburgh restaurant, his go-to kitchen appliances and his career highlights so far

FEATURE LUCY MACDONALD | PHOTOS MARC MILLAR

Where does your passion for food come from? It began when I was about 13 years old. I'd started washing dishes in the local pub up where my parents lived. I just loved the adrenalin of the kitchen, so I then progressed onto preparing starters and desserts and met some good people along the way who helped guide me into hospitality as a career. I was looking for an escape from school and this is really what inspired me. It was a big thing for my parents to let me leave school at 16 and become a chef, so I am always respectful that they let me do what I wanted to do because I found my passion so early.

Your restaurant The Kitchin has gone through some refurbishments, how has it changed? We have been here in Edinburgh for nine years now but started off very humbly and small. The business has grown naturally and organically all through these years and we have reinvested everything back into the business. Last year we basically doubled the capacity of the restaurant and kitchen, so there's a private room and a wine cellar now. It's always very aspiring to progress and evolve so myself and my wife are very proud of the place.

What is a typical day at the restaurant? I'm here all the time; it's very rare that you won't find me at the restaurant! I have four young kids so I'm up very early, always at the restaurant for 8am. I'm hands on, helping with the prep, helping with the produce. Getting ready for lunch is like a military operation. We are fortunate that we're busy, but it's a lot of pressure. Then I pick up the kids, pop home for a quick cup of tea and then back there again for the

dinner service. It's incredibly demanding but there isn't one day when I wake up and think that I don't want to go to work.

What inspires the menu at The Kitchin? We have a philosophy called 'from nature to plate' and we are fanatical about it. I know where all my produce comes from directly from my suppliers. Seasonality is something that a lot of people harp on about but they don't really do it properly. Here, as soon as the first asparagus is available, for example, we have it.

Do you have a favourite appliance? An over-indulgent kind of appliance that I have at home is the Thermomix. I think of it as a lifetime investment! It can do anything, it can make sauces, hollandaise – I think it is the most incredible invention for anyone who really wants to take their cooking to the next level. I also have the Electrolux oven and the little drawer which allows me to vacuum pack the produce into the bags and cook it sous vide. That's quality.

What would you choose for your last meal on Earth? I would have the first grouse of the season and then some mushrooms that I had foraged with the family.

What has been the highlight of your career so far? I think managing to open the restaurant with my wife has been the real highlight. I remember the one defining moment when we opened and the first time we were fully booked and we put someone on the waiting list and I thought, wow that's so cool. That was amazing.
©KBB thekitchin.com

TASTE SENSATION

The Kitchin's Sea Buckthorn & Yoghurt Panna Cotta is served with apple sorbet and East Lothian sea buckthorn consommé (shown opposite)

RELAX AND EAT

Set in a converted whisky bonded warehouse in Leith, Edinburgh, The Kitchin presents modern British seasonal cuisine influenced by French cooking techniques. Tom is passionate about using the freshest Scottish seasonal produce

ALL IN ONE

The TM5 Thermomix model makes cooking different dishes a walk in the park. It can do almost anything, from stirring, mixing, blending, weighing, whisking and even cooking. It's priced at £925 (below left)



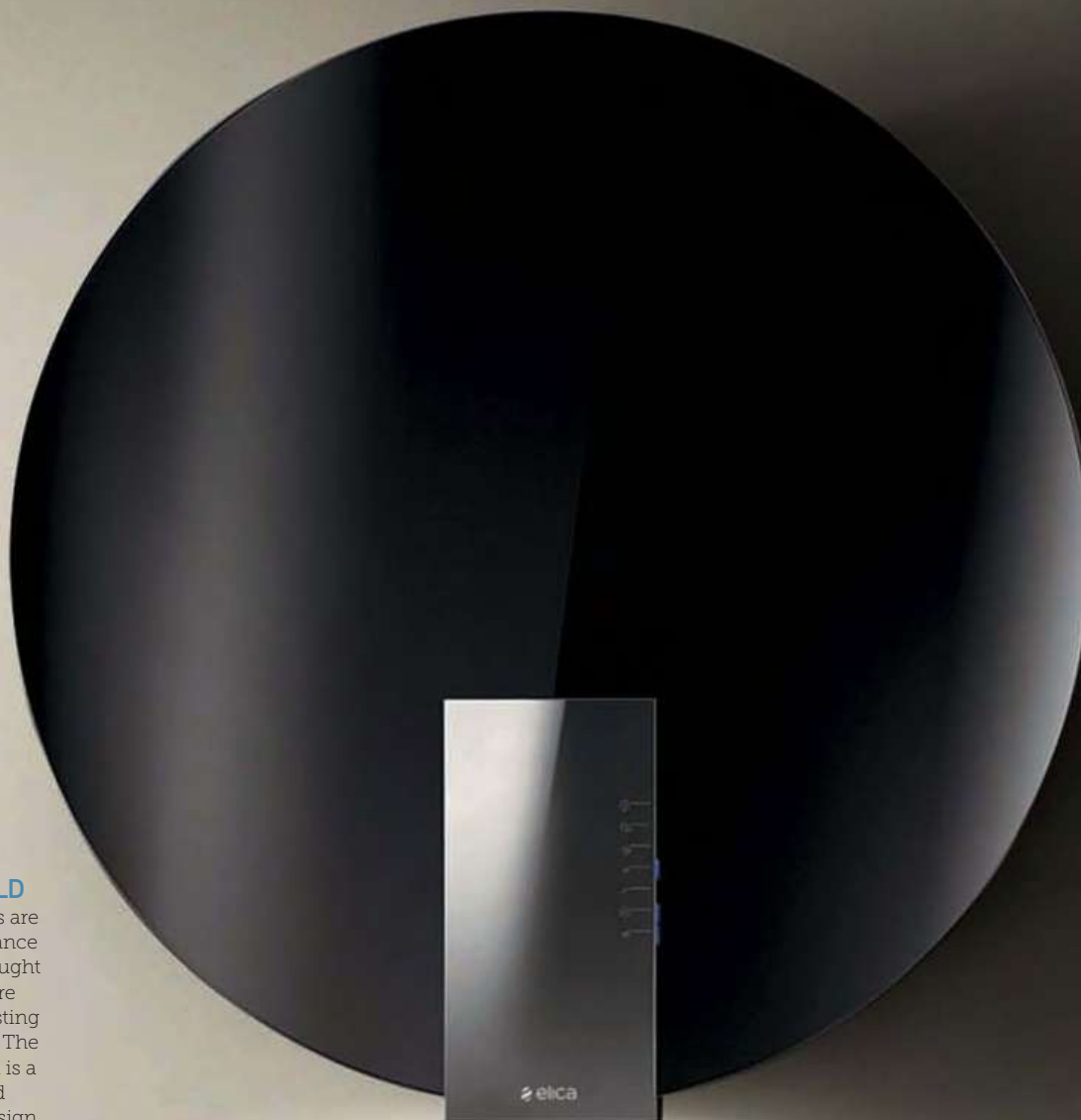
Tom Kitchin

Scottish chef Tom cut his teeth working with some of the world's best chefs including Pierre Koffman and Alain Ducasse. Along with wife Michaela, he opened his own restaurant The Kitchin in 2006 in Edinburgh, and became Scotland's youngest Michelin-starred chef proprietor when he was given the accolade the following year aged 29. He has gone on to release two cookery books and has appeared on numerous TV shows such as BBC's Saturday Kitchen.



*'It is incredibly demanding
but there isn't one day when
I wake up and think that I
don't want to go to work'*





OUT OF THIS WORLD

Utilitarian cooker hoods are not often the first appliance in the kitchen to be thought of as stylish, but there are now some really interesting shapes to choose from. The Space model from Elica is a showstopping glass and stainless steel round design, complete with discreet controls at the side with lit soft-push buttons. It has three speeds plus a booster, a maximum extraction rate of 900m³/h and a super quiet noise level rating of 56dB.

DIMENSIONS

H112xW78xD39cm

PRICE Around £1,700

STYLE STATEMENT

CUTTING-EDGE DESIGN ISN'T JUST FOR FURNITURE.
COME GATHER INSPIRATION FOR YOUR HOME WITH
OUR PICK OF UNIQUE DESIGN-LED TECHNOLOGY

FEATURE LUCY MACDONALD



FINISHING TOUCH

If you're a fan of the copper trend then the CR700 Ceramica island hood from Caple could be for you.

Creating a polished showpiece in your kitchen, this recirculation only model has a maximum noise level of 55dB, a 550m³/h extraction rate and four speeds. **DIMENSIONS**

H120xDia69cm PRICE
From around £2,029

STORE IN STYLE

Make a feature of your cooking set-up with the La Cornue W. Vaulted Oven Tower. This painted wooden cabinet has a top storage cupboard and a bottom storage tray, while the oven itself has three control knobs, 74-litre capacity, LCD display and fast pre-heating technology.

DIMENSIONS H185xW90xD79cm **PRICE** £15,600



The evolution of functionality in technology is a topic that is often discussed, but what about changes in design? Our appliances are transitioning from practical necessities to design-led pieces that are also packed with the latest features. Danny Lay, sales director at Caple says: 'Cooker hoods have become fashion statements due to lifestyle changes where more time is being spent in the kitchen, and the introduction of raw materials such as copper, stainless steel and glass. Design possibilities continue to push boundaries.' Don't be afraid to go for something different, such as an unusual-shaped hood or a small appliance in an eye-catching finish, to create a scheme that is unique to your home. And it doesn't stop at the kitchen, cutting-edge designs can be found in audio, TVs and even in the bathroom. Just take a look at the memorable Transparent Speaker by People People or the innovative Closer shower by Zucchetti. Kos. The sky is the limit when it comes to design and technology in your home, all it takes is a little imagination... **EKBB**



CAFFEINE FIX

The Ratio Eight coffee machine perfectly combines form and function. A unique design, it's made from blown glass, black walnut and aluminium. Sensors automatically determine the optimal brewing time based on the water level, and while brewing the showerhead uniformly pours over the grounds. It can cater for around eight cups of coffee and LED lights will indicate that it's ready. Made in America, the 220V version is available to ship to the UK.

PRICE Around £439

TOAST OF THE TOWN

As a sophisticated toaster design, this black gloss number from Bugatti would definitely make an impact placed on the worktop. It has a one-touch 'warm' button, integrated tray in the base for catching crumbs, plus multiple toasting options. Available from Arnara.

PRICE £170



Design TRENDS

● If you're looking to invest in audio and products that will produce great quality sound as well as look stunning, then Sam Hood, creative director and owner of Amara, has this advice: 'It's key to choose something which will sit with your existing décor but also stand out and become a central focal point. Minimal and sleek finishes are popular, especially with the audio market. Metallic finishes are also very on-trend and can be seen across various audio and appliance brands such as B&O Play and Bugatti.'

● When it comes to kitchen appliances, aesthetics are definitely merging with function. Danny Lay, sales director at Caple, says: 'This season has revealed that product designers' imagination and creativity is almost limitless and the introduction of raw materials is helping to push design boundaries further than ever before. The most up-to-date finishes in appliance design ranges from chic, white glass on a bank of ovens for a futuristic effect through to the warmth of rich copper on a cooker hood for a bold kitchen display. However, good design must always be coupled with the latest technology, so high performance appliances will always be key in the modern kitchen. Programmes and controls need to be state-of-the-art to cater for every eventuality.'



SEEING CLEARLY

Above The People People Transparent Speaker is a design for the future, yet it blends perfectly into any scheme. The glass design allows you to see the inner workings of the speaker for a truly unique experience. Compatible with any wireless technology (it even has space and power out for an Airport Express in the back) this speaker plays your music without cables directly from any device or software.

DIMENSIONS H42xW33xD11cm

PRICE £499

RUSTIC TOUCH

Below If you love the current trend for incorporating wood into tech, then you'll appreciate the aesthetics of The Cube speakers by Fern & Roby. The minimalist look is juxtaposed with the use of heart pine which is a raw materials. The base is made from recycled cast aluminium, which comes from scrap generated by the company's Virginian-based workshop, giving the product great eco credentials.

DIMENSIONS H28xW23xD23cm

PRICE Around £744





VISUAL ART

If you want your TV to make a real statement then take a look at the 85in Samsung S9. The easel-style design and size is enough to demand attention, but the tech is the real talking point. This ultra HD model features Precision Black Pro – the brand's unique Micro Dimming technology – to give deeper blacks, purer whites and enhanced colour detail to every image, giving a real cinema-style experience.

PRICE £35,000 from Selfridges

AHEAD OF THE CURVE

The newly developed EG960V television screen from LG has a subtle curved shape and a unique floating effect, to create a special home cinema experience in the comfort of your own home. This model fuses OLED technology with 4K resolution to enhance your viewing, and the self-lighting pixels delivers super clear images and brilliant colours.

PRICE 55in model is £3,799; 65in £6,499. Available from John Lewis



JUST PRESS PLAY

Left These Form2i headphones from Bang & Olufsen Play have a retro-style angled design with honest sound quality. They feel ultra-light to wear, and although they are compatible with all devices, they are designed for use with Apple products. The headphones have an inline microphone and a three button remote which means that you can adjust music, as well as make and answer phone calls on the go.

PRICE £109 from Amara

LUXURY SOUND

Below Combine sound and style with the gorgeous Taylor Croc headphones in stunning rose gold from Friends. Mixing both the trends for texture and metallics, these headphones have a three button microphone and remote, 40mm dual magnetic drivers and comfortable memory foam ear cushions. The brand has a range of beautiful designs in different materials and colours, including pearl and gold.

PRICE Around £180





IN THE LOOP

Left Radiators are an easy way to add some design flair into your bathroom. The Zero model from Iconic, which is designed by Francesco Lucchese, is made up of two sections – an essence holder, for use with essential oils, and a main body. It's made from aluminium.

DIMENSIONS

H80xW80cm

PRICE From £4,224



ONE OF A KIND

The Arteplano wall heater from Bisque is made from etched copper, but the unusual design is created once it is splashed with acid as it causes a chemical reaction when blended with the copper. Each model is then individually made with its own unique pattern, so you take home a true original. Tubes and pipes are discreetly hidden behind, keeping it neat and tidy and giving a 'floating' feel. **DIMENSIONS**

H60xW101xD5cm **PRICE** From £698

DESIGN BUZZ

Right An industrial-style radiator in a unique shape, the Honeycomb from Aeon is handmade from stainless steel, and shown here is the HON9-S model in the brushed matt finish. It is a centrally heated, hot water only model and has a patented integral water diverter so all the combs are filled and circulated for higher efficiency. This model has a heat output of 585W. **DIMENSIONS**

H140xW79xD4cm

PRICE £1,038





LIGHT BULB MOMENT

For a completely different shower concept, the Closer model from Zucchetti. Kos, designed by Diego Grandi, is inspired by the shape of a lamp. Made from brass and finished in soft touch black, the wall-mounted horizontal and vertical swivel system provides multi-directional movement, allowing you to adjust the shower head position to suit you.

PRICE £1,140



DURAVIT



CAPE COD

The new bathroom series by Philippe Starck. info@uk.duravit.com www.duravit.co.uk

Bathrooms



TEMPTING RETREAT

*Luxuriate
into the cooler
months with a
freestanding
bath, surrounded
by a deep and rich
colour scheme*

Proaza shower curtain,
£39; Kotra towel collection,
from £6; Cuaio bathrobe,
£55; Alvito towel collection,
from £4; Asola slippers, £49;
Penela bath mat, from £17,
all available from Urbanara

INDUSTRIAL COOL • THE DARK & MOODY TREND • FAMILY SCHEMES

west one bathrooms ltd.
LONDON



Battersea | Chelsea | Clerkenwell | Knightsbridge | Mayfair
Notting Hill | Wandsworth | Kent | Surrey

+44 (0) 333 011 3333

At Home Design Service available

westonebathrooms.com

Bathroom News

The latest launches and our favourite bathing beauties

COMPILED BY CLARISSA WILLS



ANTIQUE CLASSIC

We love the fact that every classic freestanding bath from The Hurlingham Bath Company is individually finished in their specialist workshop. The Schooner cast iron bath (left), with braiding, and in Dove by Farrow & Ball, is from £1,545 and is now available from a full range at West One Bathrooms. westonebathrooms.com.



SEAMLESS SHOWER

A beautiful new faucet line from Italian designer tap company Treemme Rubinetterie is the 5mm mixer, named so for its slim profile. Made from satin stainless steel, it's easy to use, eco-friendly and its delicate design will give your bathroom a modern feel. Priced around £1,090, it would be the finishing touch to any minimalist scheme. rubinetterie3m.it.

DESIGNER'S FLAIR

Wall-mounted bathroom furniture is always good for tight spaces and we're impressed with the look of the new Merno range from Roper Rhodes. The organic curves and minimal appearance give a stylish feel. This range is perfect for family bathrooms with limited floor area. Shown: Wall-hung WC, £515; Wall-hung basin, £340. roperrhodes.co.uk.



DREAM MODERN

On the hunt for a design-led freestanding vanity unit for your bathroom? Be on the lookout for the new Dream collection from Galassia which has furniture in eight different looks and all made from organic materials too. cermicagalassia.it.



Merging British sophistication with classical looks is this Shaker-style vanity unit, new from Burlington Bathrooms. It has 12 solid surfaces, along with a selection of basins, brassware, mirrors and accessories to choose from. With drawers finished in Cook Blue by Farrow & Ball, it's from £1,190. burlingtonbathrooms.com.

BRITISH BEAUTY



WALK-IN LUXURY

Perfect for a bathroom which has a large corner space is the impressive New Illusion Corner enclosure from Matki. The enclosure is available with an integrated shower tray or it can sit directly on a tiled floor. Prices start from around £1,260. matki.co.uk.

White & wonderful

Create a palatial-style bathroom with white marble surfaces. Inspired by 1950s Italian design, Fir Italia and DuPont™ Corian® have collaborated to create a glamorous bathroom collection, shown above. Purity bowl, £250; Corian® by DuPont™ vanity top in Glacier White, £310 per linear metre. corian.co.uk.



PRETTY IN PINK

Brighten up your bathroom with this antique bath with a contemporary twist. Its coloured feet can easily be changed to match your scheme. The Rockwell bath is made of Vitrite, a stone and mineral composite that replicates the look and feel of a traditional bath without the weight. It's £4,900 from The Water Monopoly, who are marking their 25th anniversary this year. thewatermonopoly.com.

Wash STATION

How about a basin with integrated storage? The ceramic Step washbasin by Note Design Studio for Ex.t has removable wooden decking, allowing it to be a drying surface when it's on and an area to hold soaps and accessories when removed. From £947. ex-t.com.



LAURA ASHLEY

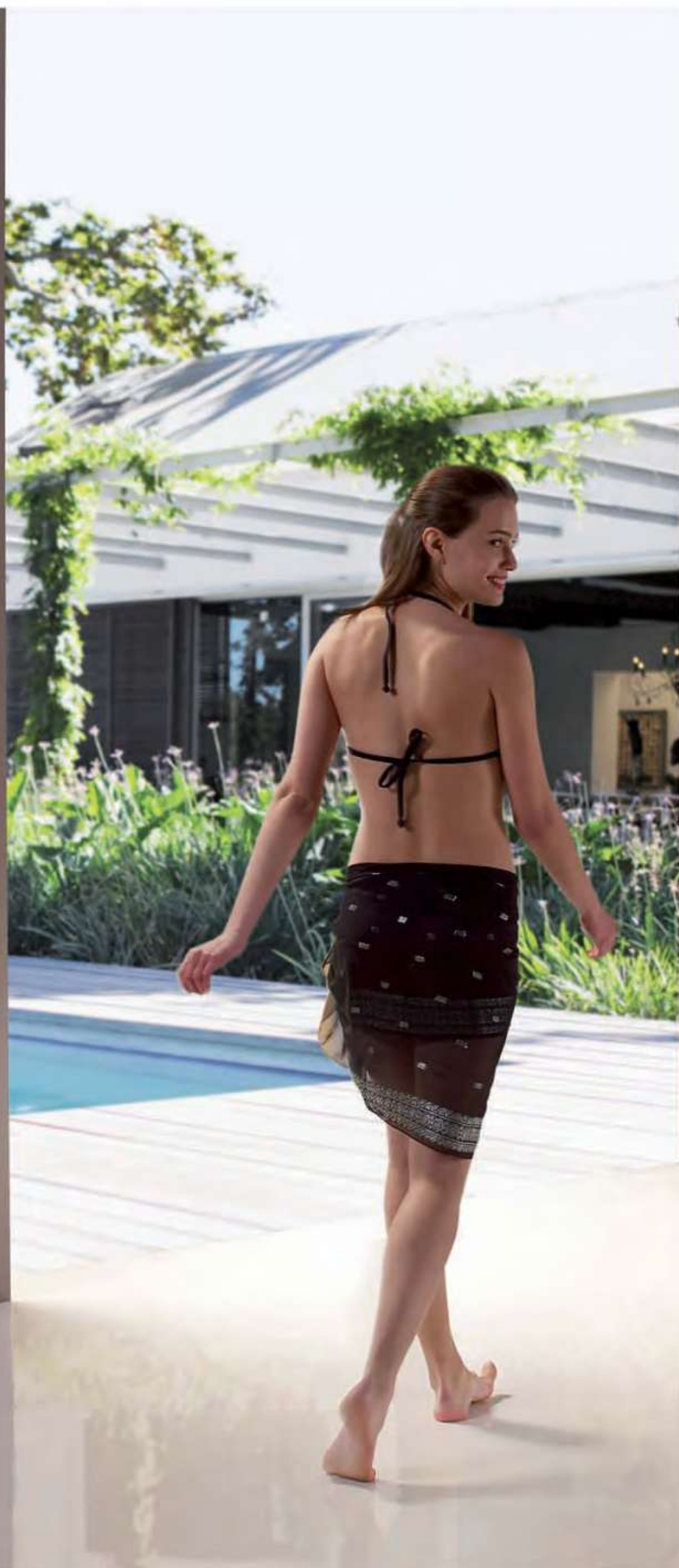
lauraashleybathroomcollection.com

FURNITURE • SANITARYWARE • BRASSWARE
exclusively by  ROPER RHODES

Available at selected bathroom retailers throughout the UK
Visit our website to find your nearest store



FOR THE WAY YOU LIVE



matki | SHOWERING



pure MATKI

The New Boutique Walk-In Shower Surround with slimline tray. Effortlessly luxurious and uniquely styled; the ultimate wet room experience, which keeps the water inside



QUIET CORNER

The Peace basin in Glacier White is seamlessly integrated into a bespoke Corian® by Dupont™ wall mount, shown here in blue-grey tones of Juniper. Corian® by Dupont™ basins start from £250 in four standard colours. Bespoke designs are priced from £450

IN THE *Dark*

For a dramatic colour scheme in the bathroom, choosing a darker palette will create a sophisticated and long-lasting style statement

FEATURE LINDA PARKER

A stark white bathroom looks clean, contemporary and stylish, but unless accessorised very well, it can also look quite cold and clinical. And while we all love pops of colour, there is a quiet comfort in the dark embrace of a moodier space.

So if you want your master bathroom, en suite or cloakroom to have a jewel-like change or new look, it might be time for the moodier colours from the inkiest of palettes, and perhaps even with metallic and textured highlights, to come to the fore.

Dramatic bathrooms don't have to be complicated. Choose simple black tiles – look at ranges from British Ceramic Tile or Original Style for example – then add texture and metallic highlights. Choose a single colour mosaic for horizontal and vertical surfaces to create a bold scheme with interest and texture. Most bathroom cabinetry is now available in a wide choice of dark timber finishes. Look at Utopia's Grey Brown Linear, English Grey, Black Linear and Durham Oak options to use within a dramatic scheme, or the Memento collection of sanitaryware in Glossy Black finish from Villeroy & Boch.

White fittings can add a streak of contrast where needed in a dark scheme, with the crisp angles of squared-off basins, a curvaceous white bath interior or a lightly framed mirror emphasising moody tones used elsewhere in the room.

Contrast, is of course, vital to a successful interior design scheme. Sabine Mané, head of marketing at Keramag Design, says: 'Black and white are classics and as such never go out of fashion. These can be used in a contemporary context to create a glamorous and sophisticated look, giving a nod to a bygone era but with a modern twist. Using monochrome colours creates a confident design statement that will work across every era.'

A professionally designed lighting system will ensure that even when dark shades are used, the room itself is brilliantly illuminated. Take the opportunity to specify spectacular light fittings. Consider eclectic antique pendants or ceiling lights that can be perfectly set against shades of charcoal and bronze, plus deep wood tones such as ebony and mahogany. **EKBB**



WAYS WITH WOOD

Above Wood-look hard floor tiles are a way of softening the appearance of dark shades in a bathroom. Shown here, the Antique Birch glazed porcelain tiles from the Absolute collection are £42 per sq. m, and the Savoy Dew wall tiles, around £26 per sq. m, both by Johnson Tiles

STATEMENT BATH

Below The Amara bathtub in cast iron with antique copper exterior and stud rivet details, £9,265, is shown with Prestige marble flooring, £199 per 20x20cm piece, and the Richard mirror in black, £867, all from Devon & Devon



‘White fittings can add a streak of contrast in a dark scheme, with the crisp angles of squared-off basins or a lightly framed mirror emphasising moody tones’



SLEEK & STYLISH

For a contemporary space, Avec Moi steam and shower cabin in matt black, from £17,400 would be ideal. Shown with Morphing steel basin console, from £3,360; freestanding bath tub, from £5,280, all Zucchetti. Kos



How to use **DARK** FINISHES

DANIEL COOK, DESIGNER AT C.P. HART

- Bathroom fittings are now available in a huge supply of colours. Consider anything from soft and delicate hues to strong, dark colours and textures - most can work in a darker scheme.
- In terms of finishes and materials, the high-gloss look is becoming less prominent now with other materials and finishes taking centre stage.
- Kerlite is becoming popular - this is a material which gives a matt, almost stone-like finish and works well on a wide range of bathroom furniture.
- Darker greys are definitely the colour of choice at the moment. When applied well, with the help of strategically placed uplighters, greys can create a really stress-free retreat.
- Other popular textures and finishes include linen prints and wood grains.

MIX & MATCH

Above left Choose a range of mixed materials for an opulent look from the Karol Bania furniture collection, prices start from £3,864, available from C.P. Hart

HOT DESIGN

Right If you want to add a dark element to your bathroom without going overboard, perhaps one statement piece would work. The Spa straight ladder towel rail and radiator in the Noir finish measures 151x50cm, and is priced at: £340, from Iconic Radiators

FINISHING TOUCHES

Far right The Glide II wall-hung cabinet from Bauhaus Bathrooms is paired with a Plus+ Ton matt black work surfaces and basin. It's 60x100x45cm, £1,670





GOLD RUSH

New Foundry
Metallics tiles from
The Winchester Tile
Company are made
using reactive glazes
to create individual
tiles that are all unique.
Available in a range
of sizes and colours,
shown here in Roman
Gold mix, £250 per sq. m



PEARL EFFECT

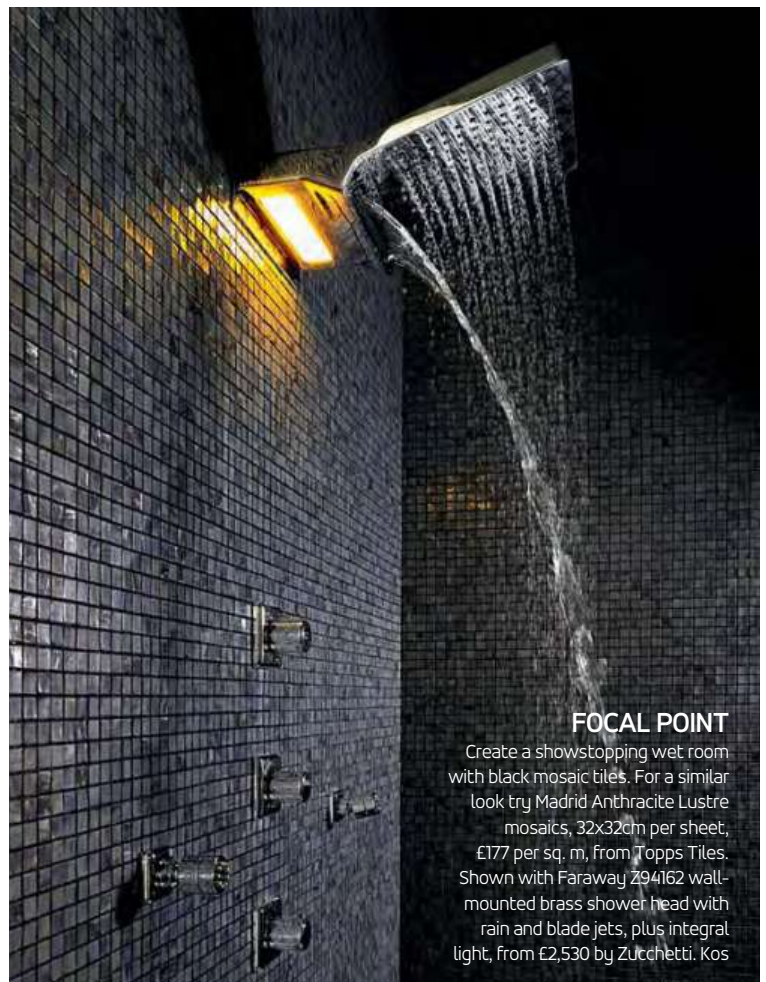
Combine mosaics and plain
tiles for a striking look.
These are Dark Mother of
Pearl mosaic tiles in 30x30cm
sheets, £607 per sq. m.
Teamed with matt black
wall tiles from the Function
& Form collection, 25x50cm,
£30 per sq. m, all available
from British Ceramic Tile

‘Black bathrooms are becoming increasingly popular with the trend working as easily for both traditional as for contemporary spaces’



COMBINE & CONTRAST

Kauli mosaics in a
mixture of stone, glass
and metal, each sheet
is 30x30cm and priced
from £150 per sq. m.
Teamed with Indus
glass tiles in black,
60x30cm, from £160,
all by Original Style



FOCAL POINT

Create a showstopping wet room
with black mosaic tiles. For a similar
look try Madrid Anthracite Lustre
mosaics, 32x32cm per sheet,
£177 per sq. m, from Topps Tiles.
Shown with Faraway Z94162 wall-
mounted brass shower head with
rain and blade jets, plus integral
light, from £2,530 by Zucchetti. Kos

**BATHE IN
STYLE**

The Lyddington freestanding bath with a stainless steel effect exterior is from £2,100. It's shown here with the Hartlebury deck-mounted bath-shower mixer in chrome, £375, all available from Heritage Bathrooms. These are the perfect contrast to black floor tiles, blinds and painted walls



GO FOR MONOCHROME

Above White sanitaryware stands out against dark stone surrounds. Citterio modular furniture, from the Antonio Citterio range for Keramag Design is from £468 for a basin to £2,108 for combined vanity units

FEELING FLUSH

Below The BetteFloor Side flush-to-floor shower area in enameled steel comes in 16 sizes and lots of colour options, including eight shades of Anthracite. From £769 for a 90x90cm size to £1,453 for 160x120cm



ELENA ZUCCHETTI
CHIEF EXECUTIVE
OFFICER OF ZUCCHETTI
KOS GROUP

How popular are dark and black colour schemes at the moment? Black bathrooms are becoming increasingly popular, with the trend working as easily in both a traditional room settings as well as contemporary space. It's not just limited to wallcoverings and paint, fixtures and fittings in black are also highly sought after.

Do you ever encounter any practical design problems with black sanitaryware and fittings? One of the biggest problems we have to take into account with black sanitaryware is maintenance and limescale. Unfortunately there is always an increased chance of tarnishing surfaces with white marks. An alternative design option is to

introduce black furniture in the room instead. This decreases the chances of surfaces becoming visibly marked, and it also creates a contemporary and sleek look when paired up with white sinks and surfaces in the bathroom.

How do you address the requirements for on-trend colours versus practicality?

Keeping surfaces white will reflect light and do tend to keep the room feeling bright and airy, contrasting perfectly against black furniture and eliminating any risk of the room feeling too dark. Introducing statement accessories and fixtures can also instantly add some texture, tone and shape, whether layered against black or fixed against white.



Q&A

SEAMLESS STYLE

Suited to any contemporary bathroom, the V-Care WC has discreet fixtures and streamlined features



The time we spend in the bathroom is essential and it's one of the main places in our homes where we want to feel comfortable and relaxed. Washing needs to be easy and convenient so we are all looking for ways to improve the time we spend in this room. Cleaning with water after using the toilet is becoming more popular as we understand the feeling of complete freshness and cleanliness. The V-Care WC from Vitra is redefining what we think of as standard by combining the functionality of a toilet and the cleaning properties of a bidet into a stylish WC that can seamlessly integrate into your bathroom.

Comfort is an extremely important factor, so Vitra has made it easy to personalise your washing experience by adjusting the intensity, temperature and direction of the water, directed to the front or back. The temperature of the ergonomically designed seat can also be controlled as you like, plus the automatic air purification system removes unwanted aromas.

The V-Care WC is completely hygienic, for example the nozzle automatically cleans itself before and after each use. It's made of stainless steel and the tip is chrome plated for long-lasting durability and hygiene. The WC itself is also incredibly hygienic as it has a rimless interior which means that there are no crevices for dirt to become trapped.

With style in mind, nothing has been compromised with the design of this WC. The fixtures and electronic parts are concealed so that it looks just like a regular toilet. The streamlined and modern look was conceived by the Design Studio Noa to ensure it integrates seamlessly into your bathroom. **EKBB**

Fresh & Clean

Contemporary design and high-tech performance come together to give you a hygienic and comfortable experience



OPEN & CLOSED

Left Buttons on the side of the WC allow you to operate the basic functions. You can also turn the extra washing features off so that it can function like a standard WC. The Comfort option offers an automatically opening and closing toilet seat

REMOTE CONTROL

Right It's easy to operate using the remote control and the sensors detect when you are in the right position



For further information about Vitra, please call 01235 750 990 or visit vitra-vcare.co.uk



Vitra

Rare BEAUTY

This couple went back to bare bones with their apartment renovation, using just wood, concrete and brick throughout

PICTURES **LUC ROYMANS** | WORDS **CIARA ELLIOTT**



ACCESS ALL AREAS

The structure of the warehouse is visible throughout, with concrete floors and white walls keeping the look minimal and industrial

FREE STYLE

This stunning gold freestanding bath by Aquamass is the focal point of the room. 'Its shape is simple and modern, and ideal for a really luxurious, long soak', says owner Marie



‘We wanted to keep the metallic structure visible everywhere, challenging ourselves to create contrasts without colour or objects’



From an old warehouse full of construction machines to an ad hoc wine cellar, Marie Honnay and Raphael Casper's Liège apartment was not your ordinary estate agent's dream sell. 'In fact, there was nothing here when we bought it in 2011,' laughs Marie. 'No lighting, heat, floor structure or interior brick walls. Literally nothing. But we loved that industrial feel, and it is that mood that we've held on to throughout the renovation.'

A dream design combination – Marie is a fashion and lifestyle editor for major magazines including Marie Claire in Belgium and Raphael is an interior architect – they soon set to work together to achieve the resulting quirky apartment space.

Their aim was to keep things as close to how it was when they first saw the place, adding in a level of luxury and comfort but 'no useless decoration'. As neither is a fan of colour the concept was to keep everything as simple as could be, making just the 'essential interventions', and keeping the palette to bare brick, concrete, mirror and metallics.

'We wanted to keep the space as open as it first was, so we have no doors and only one wall separating the bedroom and the bathroom from the main space,' says Marie. 'We also wanted to keep the metallic structure visible everywhere and challenge ourselves to create interesting contrasts without colour or objects.' And the result? 'We love it!' **EKBB**

CLOSET SECRETS

A run of mirrored wardrobes goes all along one side of the bedroom. 'I do like separate dressing rooms,' says Marie. 'But this system is very practical and I love how it looks'

Design profile

The bathing areas of this loft-style apartment based on the outskirts of Liège in Belgium beautifully blur the lines between living and bathroom areas. With a statement gold bath in the bedroom, all that separates the washing space from the rest of the apartment is one simple brick wall.





Stockists

FIXTURES AND FURNISHINGS

BEDROOM: Ottori white leather king size **bed** with storage, £1,500, Habitat. Kartell Louis Ghost **chair**, £230; Componibili two-tier unit **bedside table**, £97, Houseology. **Wardrobes** from £199 per two-door unit from Pax range at Ikea. **Bath**, Gold on the outside, £10,791 and on inside £13,491, Aquamass at C.P. Hart.

BATHROOM: The **showers** and **fixtures** are all Axor by Stark at Hansgrohe, prices for a single-lever basin mixer start at £570 and a shower set, £312. The **basins** are by Vero at Duravit, prices are from £415 and stands from £312. Furniture available in the UK at C.P. Hart.

OTHER DETAILS: Scala white leather modular **sofa** is £895 for a single seat unit, and £1,100 for corner unit, both Habitat. The **artwork** throughout the flat is a mix and includes personal pieces from the MAD Musée collection (an original ensemble of works from the Creahm studios of Liège and Brussels).

FOR STOCKISTS, SEE PAGE 182

FEATURE WALL

The only touch of colour in the apartment is the brick wall (left) which divides the bathroom and bedroom. 'We had planned to add a door but as we don't have children it's not vital yet,' says Raphael

MIRROR, MIRROR

Left The entire upper wall behind the basin is panelled in mirror which reflects natural light and boosts the overall spacious feel of the room. The white bin is a Vipp classic



RAPHAEL CASPERS
INTERIOR ARCHITECT

How did you plan the master en suite?

The bathroom had to be practical, so I started with the shower, which I wanted to be large (2x1m in size). I then added some wood flooring underfoot to give more comfort inside and also to create a nice contrast with the concrete.

How does it flow with the bedroom? As I worked with a small range of materials throughout the house - mainly concrete, white block walls and the existing metallic structure - all of the spaces naturally connect to each other. Each

zone is centred on one single piece; so in the bedroom, the stand-alone gold bath is the focal point.

And your choice of materials? We wanted to keep the raw and industrial feel that we had loved from when we first visited the space. I don't like too much colour or decoration.

Can you tell us about the statement bath?

As a journalist, Marie had interviewed the director of Aquamass and had fallen in love with the form and gold colour of this bath. So we chose to put it in the

bedroom. I added a thin white curtain as a backdrop on the wall to give a feeling of light and theatricality. The basin is from the same collection, and sits on a bespoke countertop made of wenge, which offers warmth against the white.

What inspired this design?

For the brick wall, I was inspired by a Liege-based kitchen store which was designed by architect Valentiny. It features the front side of an old house that you see from the inside if the shop. Also Philippe Stark is always an inspiration.

Q&A



V-CARE

ANY SMARTER, WE COULDN'T CALL IT A WC

Contemporary Design

Contemporary, comfortable and complementing any bathroom, this stylish and modern WC is setting the standard for design in shower toilets. The ergonomically designed seat and ceramic shower toilet with its concealed, integrated electronics provides the perfect blend of design and functionality.

Personal Cleansing

Specially designed nozzle enables the user to adjust the water spray for the perfect cleansing experience. Water temperatures and nozzle position can also be adjusted by the user via the remote control.



Remote Control

V-care can be used via the remote control for optimum hygiene, comfort and convenience.

Redefining Hygiene

A rimless (Rim-Ex™) wall-hung design offers effortless cleaning. Air-purification is automatically activated when the toilet is in use, ensuring optimum bathroom hygiene.

Vitra

vitra-vcare.co.uk
vitra.co.uk



Child's PLAY

*Create a splash-friendly
bathing area with walk-in
shower zone, sturdy wooden
furniture and bench seating.
Add a coloured pompom or
three to a neutral scheme for
a fun-filled family feel*

COMPILED BY ANNA MORLEY

1 Raindance Select 360 **showerpipe**, from £1,264, Hansgrohe **2** Linie Design Asko light beige **rug**, £260, Heal's **3** Decadent Decs **PomPoms**, £6.50 per pack, Talking Tables **4** Frame25 **mirror cabinet** with integrated LED lights, from £900, Laufen **5** Yellow **stool** kolda, £39, Urbanara **6** Classic children's **chair** in white, £25, John Lewis **7** La Dolce Vita 900 **basin and drawer unit** in a San Pietro finish, £1,250, Fired Earth **8** Voyager basin monobloc **tap**, £165, Crosswater **9** Remada Hammam **towel** in ultramarine and ivory cotton, £39, Urbanara

FOR STOCKISTS, SEE PAGE 182



**MAKE A
SPLASH**

The Burgbad
Bel Collection is
designed with guest
bedrooms and kid's
bathrooms in mind.
It is priced from
£1,036, at Ripples



ON THE SPOT

Designed with comfortable ergonomics in mind, the Geo Line range brings natural shapes into the bathroom. The Geo tray 80 shower tray, from £900; Closer shower head, from £950, all from Zucchetti. Kos

Stand on luxury

Add a stylish twist to your bathroom with a feature shower tray

COMPILED BY CLARISSA WILLS



1



2



3



4



5



6



7



8

- 1** Rotunda polished nickel tray with copper exterior, £1,595, Hurlingham Baths **2** Superplan Plus tray with added anti-slip decoration, from £888, Kaldewei **3** Happening teak wood platform shower tray, from £451, Roca **4** Universal 40 cast stone shower tray in Olive Green, from £264, Matki **5** Entry shower tray with wooden inserts, £1,048, Bette **6** Calacatta honed oblong shower tray, from £425, Mandarin Stone **7** Rectangular matt black ceramic shower tray, from £795, Simpsons **8** Idealite quadrant low profile shower tray in lightweight polyrner resin, from £169, Ideal Standard

FOR STOCKISTS, SEE PAGE 182





CHARLES
YORKE

Kitchens & Living Spaces

— HANDCRAFTED IN ENGLAND —



For further information
please call
01623 756 080
www.charlesyorke.com



REAL
BEAUTY
IDEAL
LUXURY



Ideal Standard, the leading provider of innovative and design-driven bathroom solutions has unveiled its latest breakthrough in bathroom design.

Introducing the stunning Dea bathroom suite. This new collection combines beautiful design and functional excellence. Dea embodies Ideal Standard's commitment to creating a beautiful use of space.

Dea has won multiple awards for Product Innovation and Best Bathroom Product.

Find your nearest exclusive Interiors dealer at Ideal-Standard.co.uk or call our customer services team on 01482 346461



A
BEAUTIFUL
USE
OF
SPACE

Bedrooms

SHADES OF GREY

Embrace a calm feeling with light tones of grey and pure white bedding. Embellish with fresh stems of greenery

Duvet cover and white pillow cases from the Beaufort collection, from £45; Chevron texture pillows and bedspread from the Mason Collection, from £16; Addison Collection grey cushions and throw, from £25, all The White Company



DESIGN NEWS • FLOORING GUIDE • SHOPPING FOR CANDLESTICKS

Coming next month in...

essential

KITCHEN

BATHROOM BEDROOM

Choosing kitchen surfaces, design-led tapware and bedroom window dressings, as well as over 50 pages of stunning real-life homes

PICK UP OUR NOVEMBER ISSUE FOR AUTUMN INSPIRATION
ON SALE 1ST OCTOBER

Bedroom News

The latest launches, trends and inspiring things

COMPILED BY EMMA FOALE

FANCY FLORALS

Not strictly just for summer, florals look great all year round, and we particularly love the large scale print on this Tranquil Rose bed linen from Christy to make a stylish statement. Colours include oceanic blues, olives and chartreuse. The double duvet cover is £99; The Oxford pillowcase cover is priced at £35. christy-towels.com.



CRAFTED BY HAND

Winner of this year's The Great Heal's Bodging Race was designer Gareth Neal and his oak and leather chair. This hands-on competition involves six world class designer-makers who have to come up with a new, handmade product. The chair will be launched in the Heal's Tottenham Court Road store and online in September. £895. heals.co.uk.



Behind CLOSED DOORS

Inspired by traditional Chinese furniture, the Winston bar cabinet by Christophe Pillet has a Canaletto walnut exterior. It opens up to reveal a surprising interior and can be used as your own mini bar with internal compartment features such as bottle holders, drawers and extractable sections. It's from £12,500. lemamobili.com/en.



COMFORT FIRST

For some handy hidden storage, the Arlo & Jacob Watson stool is a great addition to a guest bedroom. It's shown here in Stirling Lime but can be upholstered in your choice of fabric, from £265. You can also visit the brand's first London showroom, which is in a former Victorian ice cream factory in Fulham. arloandjacob.com.



Getting comfy

From the exclusive 'Woven by Design' collection, these cushions can add a splash of pattern to your bedroom. A combination of eye-catching ikat and geometric styles create a contemporary Scandinavian look. Prices start from £40 for the black and white Azza cushion (top). woven.co.uk.

Founded by sisters Chloe and Olivia Brookman, Olli Ella is the go-to place for beautifully created nursery furniture, bedding and accessories. There's plenty of fun and colourful ideas to decorate your child's room in style. As shown, the Pom Pom belly basket and Confetti fitted sheet are £35 each; Mesa art print, £45. olliella.com.

FOR THE LITTLE ONE



LAIID-BACK LIVING

Pick a comfortable mattress to sit atop this attractive Cube bed from Raft and you'll have a perfect combination. The solid rustic frame, made from 100 per cent reclaimed teak, is the defining feature of this bed, showing off the texture and grain of the timber. It also has a fully slatted base to let air circulate. From £1,506. raftfurniture.co.uk.

Looking pretty

If you're making the most of your space, multi-functional furniture such as this Semley desk from Another Country is ideal. As a desk it has ample space for a laptop and it has a cabin hole for cables, or it can easily be turned into a dressing table with the addition of the mirror. It's made from European oak and has a slim frame that'll adapt to fit into any modern bedroom. The desk is £550 and the mirror is £60. johnlewis.com.



Viega Visign actuating panels

Discover design from an entirely new perspective.



viega.co.uk

Details that set trends

Be sure of setting the right trend in the bathroom with Viega Visign actuating panels. Whether they are made of classic glass, high-quality chrome or modern stainless steel: Their high-quality material, top workmanship and a nationally and internationally award-winning design shine through. They also impress with a high level of functionality and are, of course, compatible with all Viega pre-wall systems. More information: Viega Ltd · 200 Brook Drive · Green Park · Reading · RG2 6UB · Tel: 0330 111 4568 · sales@viega.co.uk **Viega. A better idea.**



1



2

- 1 Visign for More 100
article number 597498
- 2 Visign for Style 12
article number 597252

viega

Long DIVISION

When it came to refurbishing their 1930s bungalow, this Aussie couple turned the lounge into their bedroom, with stunning effect

PICTURES ANGELITA BONETTI | WORDS CIARA ELLIOTT



GOOD WOOD

The custom-designed headboard is in natural zebrano veneer, which is a material that is carried through to the vanity unit in the en suite. The classic wooden birds placed on the headboard are by renowned Danish architect, Kristian Vedel.

DECO DETAILS

The corning, fireplace and picture rails are all original to the extant house, which was built in 1936. This room was originally the family sitting room before the refurbishment



Design profile

Wood sets the tone for this clever space-saving mid-century inspired master bedroom. Natural zebrano veneer is used on the custom-designed bed, bedhead and vanity unit while the original Jarrah wood floorboards have been salvaged throughout.

KLOPPER & DAVIS ARCHITECTS
270 York Street, Subiaco,
WA 6008, Perth, Australia.
Tel (089) 381 4731. kada.com.au

‘T

he headboard? It was my idea!’ laughs Rebecca Hughes, a Perth-based scientist who, along with her husband Kevin Balloch and local design company Klopper & Davis Architects, completely redesigned and reconfigured their 1930s Californian-style bungalow to double its size and create a light-filled and spacious family home. ‘This room was originally our lounge and as we wanted to keep all of the features, including cornices, the most logical thing was to create a floating bed in the centre of the room.’

As this part of the house is actually the darkest area, the architects came up with the idea of turning the aspect of the house around and putting the bedrooms where the living area used to be, and vice versa. The new dressing room and en suite bathroom were in fact the site of the original dining room.

‘We had never really laid down and looked up at the ceiling in this room before, but it really is quite beautiful’, reveals Rebecca, who says she loves the new configuration of the bed and walk-in wardrobe, as well as the sophistication of the en suite bathroom.

‘The full width mirror in the bathroom makes it feel very spacious, and the design of the vanity captures that mid-century look that fits with the character of the old house,’ she adds.

In the bedroom, the original wooden floorboards are from the indigenous Jarrah tree, which is the most common species in Western Australia and has become something of a coveted material on the interiors scene now. The fireplace, picture rails and windows are all also original.

Any regrets? ‘Not at all, although underfloor heating in the bathroom would have been nice. In fact, the first plan was to have hydronic underfloor heating throughout, but budget constraints meant we decided to remove this. We do have plenty of other heating options, so it’s no biggie.’ **EKBB**

DESIGN FEATURE

The tiled dividing wall between WC and shower creates the perfect screen and allows for a generous walk-in shower area



SIDE RETURN

The couple continue the mid-century meets modern look through to the bathroom with this natural zebrano veneer and laminate sink unit on solid ash legs. The floor is Jura Blue limestone

‘The full width mirror in the bathroom makes it feel spacious and the design of the vanity captures the mid-century look that fits the house’



**SAM KLOPPER,
MATT DAVIS &
OLIVIA REEVES**
KLOPPER & DAVIS
ARCHITECTS

Can you tell us about the design of the bed and headboard?

We wanted to maintain the character of the room so the bed became an island orientated to take in the view. We designed a multi-functional piece of furniture as a bedhead and storage for the walk-in wardrobe area. There is also LED strip lighting on the bedroom alcove side for night reading.

How did you pick the materials?

We minimised the amount of materials used throughout the house, so there is a sense of continuity and flow through the spaces. In the bedroom we have kept the original floorboards and in the bathroom the flooring is a limestone which wraps around the wall and forms a splashback to the vanity. The neutral

white wall tiles in the en suite are rectified and with few grout joints to form a minimal backdrop.

How did you plan the en suite room? The vanity, toilet and shower are aligned on the internal dividing wall, allowing the gorgeous Art Deco timber framed window to remain intact. There is a tiled dividing wall which functions as a screen, creating a generous walk-in shower area.

And the vanity? We wanted it to feel like a crafted, vintage piece. The design concept is similar to a mid-century vanity, where the edge of the cabinetwork is revealed. The doors are inset, so a contrasting white frame is expressed and a solid leg reinforces the furniture aspect.

Stockists

FIXTURES AND FURNISHINGS

MASTER SUITE Bed, headboard and wardrobes, all custom designed and made bespoke by Kloppe & Davis Architects. Linen **bedding** by Pure Linen, Australia. For similar try the Croft collection at John Lewis, from £20. Similar Missoni **throw**, £230, Amara. Walter Knoll designed Oota **side table**, £794, Aram Store. Other accessories including small **vase** and **clock** by Georg Jensen and ornamental **wooden birds** by Kristian Vedel are available at sites such as Amara. The **light pendant** is an original vintage piece – for similar see Retrouvius. **EN SUITE BATHROOM Bathroom cabinet** in natural zebrano veneer is bespoke by design firm, as before. Similar glazed white porcelain **tiles** in shower wall, £25 per sq. m, Tile Mountain. Tonic **WC**, £368, Ideal Standard. Similar **tapware** by Vola. Similar Jura Blue limestone **floor** and **splashback tiles**, £59 per sq. m, Stone Vale.

FOR STOCKISTS, SEE PAGE 182

Q&A

Take it to THE FLOOR

Creating your dream bedroom should start from the bottom up – get the flooring right and you're halfway there

FEATURE AMY CURTIS

DEEP JOY

Achieve a luxurious deep pile feel without going to the trouble of fitting carpets with the new Touchable Textiles range from the Plantation Rug Company. Beautiful in Light Grey (*shown*), is 100 per cent wool and comes in three sizes. Prices start at £200 for 90x150cm



IN THE ROUND

Go for the 1970s feel with a natural rug made from jute, which is a rough fibre from the stems of a tropical plant. This 120cm rug is £95, from Tine K Home



the type of flooring you choose in your bedroom will immediately set the tone for comfort, style, light, pattern and colour, so think carefully about the look you're aiming for. Most people opt for carpet in this room as it's soft underfoot and you don't have to go for a really hardwearing product as this is a low-traffic area. There's still plenty to consider though, to get the style and feel just right. In fact, for some of the best advice on choosing, buying and fitting, it's worth getting in touch with The Carpet Foundation.

A deep pile carpet has got to be top of the list for luxury and comfort. Made with longer fibres, it has depth so your feet will sink into it. The downside, of course, is that over time it will flatten and change appearance in some areas, but as bedrooms are low-footfall rooms, this shouldn't be a huge problem. If you like the comfort of a deep pile but you are looking for a neater look, you might prefer a velvet pile, which is shorter but still very soft underfoot. Or, if you want for a different type of look altogether, go for a loop pile (rougher underfoot but a great contemporary vibe) or a tufted carpet that will show off a chosen pattern beautifully.

Get the look

Most of us play it safe with carpet and choose a plain, neutral design, but a patterned carpet can still be a good, long-term choice if you're clever about it. For instance, a narrow stripe will create a neat, tailored look (try it both length and widthways to see how it can make the room feel wider or longer). Florals and geometrics can also work well if you choose something in muted tones with only two or three different colours in the pattern. Team with plain walls and you can still keep a scheme restful while adding interest.

Hard choice

Wood is the first choice for many, with its warm feel, but the latest advances in laminate mean that you can create the look at a slightly lower cost. There are also plenty of colour options, from pale grey to black, plus the choice between parquet-style blocks or longer, wider, slimmer or shorter planks. And if you're worried about warmth underfoot, invest in a rug. As it's not a permanent fixture, you can give yourself a bit of a free rein and be bold with the colour or pattern. The possibilities are almost endless. **EKBB**

LEATHER LOOK

A hard floor in a bedroom is just crying out for a rug and Fading Night (*shown here*) in shades of grey looks stunning against a pale floor. The ombré effect means it would work equally as well on a dark floor. Made from leather, it costs from £450 for 140x200cm





WOOL PACK

For a really luxurious look in a bedroom, the Valley carpet range from Blenheim Carpets consist of large loop pile carpets that have a textured yet soft appearance. It's 100 per cent wool with a width of 4m and is available in a choice of four colours, from £84.60 per sq. m



MAKE A STATEMENT

Add a splash of colour to your bedroom with this Cross Starfloral large grey and orange wool rug from Habitat. It's made from 100 per cent wool, and is £350 for the 170x240cm size



SOFT & CLASSIC

For a feminine look with a classic feel, this design from Brintons is ideal. The neutral shades give it a grown-up feel and it's made from 80 per cent wool and 20 per cent nylon so it's really soft underfoot. This colourway is Champagne in Classic Florals Parterre, from £80 per sq. m

'Most of us play it safe with carpet and choose a plain, neutral design, but a patterned carpet can still be a good choice if you are clever about it'



GO GRAPHIC

Left This tessellating pattern brings interest to a pared-back room. It's by Ashley Hicks and is part of the Quirky B Daisy collection for Alternative Flooring. The pattern was inspired by a wall decoration in an old temple in Sri Lanka. There are three designs in the collection, this is Daisy Gloriosa, £95.85 per sq. m

WAVELENGTHS

Right If you've stuck with white for your walls and bed linen, why not go for a hit of colour with a bold rug? The wavy lines on the Bonita rug in Jade from Flock Living bring a hint of fun into a scheme without dominating the look. It's made of a wool and plant fibre mix and costs £252 per sq. m



CALM & MUTED

Right The subtle stripe in the Ashtanga Asana carpet will work with any style of room. It is 100 per cent wool so it's very hardwearing too. It is part of the Barefoot collection - a range of neutral blends that are very comfortable underfoot - and from £63 per sq. m at Alternative Flooring

RIPPLE EFFECT

Below Add pattern and texture to a room without overpowering the scheme or bringing in too much colour with the Portland 100 per cent wool textured carpet from Flock Living. This carpet has understated detail but still makes an impact. Shown here in Fossil, it costs £108 per sq. m



NATALIE LITTLEHAILES
CONSUMER MARKETING
MANAGER AT BRINTONS

What's the best carpet for a bedroom?

Woven carpets do not suffer from the stability weakness which can often be associated with tufted carpets. This particularly occurs in rooms where furniture is moved around, such as bedrooms.

Will carpet work with underfloor heating?

The Carpet Foundation carried out some research in conjunction with the Underfloor Heating Manufacturers Association (UHMA) and this proved that most carpet can be used over heating systems. The research showed that a carpet/underlay with a combined thermal resistance of less than 2.5 togs allows underfloor systems to operate efficiently. However, we always recommend the information on the tog values for your choice of underlay is given to the manufacturer so they can ensure that the heating system can perform correctly and efficiently.

Is there a particular underlay that's better in a bedroom and do you always have to get a new underlay with a new carpet?

I'd recommend a firm rubber crumb underlay. Firmer underlays give added protection against the subfloor during normal walking. Also, indentations from furniture will be less severe, and they will prevent excessive vertical movement and stretching of the carpet and will therefore help to prevent rucking. Soft, low density underlays do not give adequate support in heavy wear areas as the carpet pile is effectively squashed against the subfloor, accelerating wear and tear. In our experience it is false economy to fit new carpet over old or softer, cheaper underlay. Carpet needs to have as firm a support as possible to be its best. An underlay will not be capable of providing support to the carpet so the new product will wear quicker.





RE-THINK PINK

A bold colour can work wonders to bring warmth to a modern scheme. Here, industrial seating and lighting is softened by the Bell Twist carpet in Rosebud by Brintons. Against the colder blues and whites, the deep pink pulls the look together without appearing too feminine. It costs £40 per sq. m

ESSENTIAL *flooring*

GOOD AS WOOD

Right This is a great example of laminate that looks just like wood. Simple to lay and it weighs less, so it's easy to get up the stairs and it's soft and warm underfoot. Another benefit of laminate is that it stays clean as there are no dents or grooves to catch dust and dirt. This is Latin Pine 24110 from Moduleo and costs from £20 per sq. m

DARK STARS

Below If you like the appearance of a wooden floor but find the sheen too much for a bedroom, take a look at something with a matte finish instead. This is Single Stave Blocks black oak parquet flooring finished in black oil. It costs £65.55 per sq. m from Junckers



‘Wood is the first choice of many with its warm feel, but the latest advances in laminate mean that there are other ways to get the look’



PARQUET LIFE

A lovely play on the classic parquet flooring, Rostrevor from the Patterns & Panels collection from Ted Todd Hardwood Floors uses larger panels for a bolder look. Made from European Oak, it has a lacquer finish for extra durability and it's suitable for underfloor heating. It costs £35 per sq. m

NORDIC LIGHTS

Scandi style is so popular and this pale grey strikes a good balance between offering a classic style with a nod to the cooler colours. Part of the LIVYN collection at Quick-Step, it's made from luxury vinyl and has the appearance of wood. Shown in Canyon Oak Warm Grey, it costs £27 per sq. m



FLOORING DIRECTORY

The next in our collectable directory guides; this month our round-up of companies specialising in flooring



ALTERNATIVE FLOORING
01264 335111
alternativeflooring.com

AMARA
0800 587 7645
amara.com

AMTICO
01212 228285
amtico.com

BRINTONS
0800 505055
brintons.co.uk

THE CARPET FOUNDATION
01562 755568
carpetfoundation.com

FELT
020 8772 0358
feltrugs.co.uk

FERM LIVING
0045 7022 7523
fermliving.com

FIRED EARTH
0845 366 0400
firedearth.com

FLOCK
020 8440 8777
flock-living.com

GRAHAM & GREEN
0208 987 3700
grahamandgreen.co.uk

HARLEQUIN
0845 123 6815
harlequin.uk.com

HEAL'S
0870 024 0780
heals.co.uk

HOUSEOLOGY
0330 363 0330
houseology.com

HOUSE OF TAI PING
0207 808 9650
taipingcarpets.com

JAB ANSTOETZ
jab-uk.co.uk

JOHN LEWIS
0845 604 9049
johnlewis.com

JUNCKERS
01376 534700
junckers.co.uk

KARDEAN
01386 820100
karndean.com

KERSAINT COBB
01675 430430
kersaintcobb.co.uk

LOAF
0845 468 0697
loaf.com

LUKE IRWIN
0207 730 6070
lukeirwin.com

MODULEO
01332 851500
moduleo.co.uk

NEPTUNE
01793 427427
neptune.com

OKA
0844 815 7380
okadirect.com

PETER MIKIC INTERIORS
petermikic.com

PLANTATION RUG COMPANY
0800 012 1511
plantationrug.co.uk

QUICK-STEP
0844 811 8287
quick-step.co.uk

SCION
0845 123 6815
scion.uk.com

SURFACE TILES
020 7819 2300
surfacetiles.com

TANIA JOHNSON DESIGN
07920 274753
taniajohnsondesign.com

TED TODD
01925 283000
tedtodd.co.uk

THE RUG COMPANY
020 7908 9990
therugcompany.com

VICTORIAN WOODWORKS
020 7730 6957
victorianwoodworks.co.uk

WOVENGROUND
020 7193 0505
wovenground.net

ZOFFANY
0844 543 4600
zoffany.com

barbarawill.org

Spot the pants. Or the bras, the stockings and the skirts. Spot the suits, the boots, the books and the braces. Spot the nikkals, the wotnots, the whatyoumecallits and thingymejigs. Pointless. Barbara's been. The only thing you'll spot here is a passion for materials and an eagle eye for detail. To quote a client "She's more than just a brilliant furniture designer, she's a disappearing act." Browse, call or mail. And Barbara will get you organised. barbarawill.org 0207 978 23 49 barbara@barbarawill.org

Barbara Genda
BESPOKE FURNITURE



essential KITCHEN BATHROOM BEDROOM



Our handy **ekbb** app lets you carry pages of kitchen, bathroom and bedroom inspiration with you wherever you go. View sample pages for free, or subscribe to explore the entire magazine on the go.

Download the new mobile edition of **ekbb**
on your iPad, iPhone, Android device, PC, or Kobo eReader!

TO DOWNLOAD THE APP FOR FREE SEARCH FOR EKBB
1 ISSUE **£2.99** | 3 ISSUES **£7.99** | 6 ISSUES **£16.99**





Cosy & CALMING

Make your bedroom effortlessly cool with white wooden panels, clean ceramic accessories and minimal furniture. Add interest with blue and white statement bed linen plus contrasting orange cushions and throw

COMPILED BY CLARISSA WILLS

- 1 Portland pendant, £243, Made In Design
- 2 Melin Tregwynt Navy St. David's cross wool cushion, £69.95, Liberty
- 3 Drew bamboo and lacquer side table, £40, Habitat
- 4 Yeti rug by Brink & Campman, £1,379, Amara
- 5 Scrapwood wallpaper PHE-08 by Piet Hein Eek, £199 per 9m roll, Rockett St George
- 6 Framed canvas print by Naomi Barber, £95, John Lewis
- 7 Bertoia side chair in white Rislan by Knoll, £696, Aram Store
- 8 Living by Christiane Lemieux Odisha Rust throw, £100, House of Fraser
- 9 Large Bubble vase, £110, Kelly Hoppen

9

FOR STOCKISTS, SEE PAGE 182



SWEET SLUMBER

Add a pop of colour to a neutral scheme with a blue and white dip-dye style bed spread. Shown is the Dorval in cobalt double quilt cover set, £135, Sheridan



OLD FLAME

Enjoy a restful night in with a good book and candlelight for company. Tall candle holder, £19; Small tea light holder, £12; Bed linen, from £17; Still stone square pillowcase, £25; Bud grey throw, £120; Small glass, £5; Small stoneware dipped vase, £20, all from Murmur



Burning bright

Create a cosy ambience by your bedside with a stylish candlestick

COMPILED BY CLARISSA WILLS



1



2



3



4



5



6



7



8



9

1 Oak candlestick, £19, BoConcept 2 Cork candlestick, £33, Bloomingville 3 Flamma candlestick, £24, Clippings.com 4 Large white marble Fulcrum candlestick, £325, Lee Broom 5 Chunk of concrete and copper, £37, Twentytwentyone 6 White stone candle holder by Tom Dixon, £75, John Lewis 7 Cast iron candle holder, £18, Folklore 8 Metal candlestick, £10, H&M 9 Kubus in black, £65, By Lassen

FOR STOCKISTS, SEE PAGE 182

Stockists

Contact details for the products, shops and designers in this issue



A **ABODE** 01226 283434
abodedesigns.co.uk
ABODE 01273 621116
abodeliving.co.uk
AEON 01908 271155
aeon.uk.com
AGA 0845 712 5207
agaliving.com
ALESSI 020 7518 9091
alessi.com
ALTERNATIVE FLOORING
01264 3355111
alternativeflooring.com
AMARA 0800 587 7645
amara.com
AMAZON amazon.co.uk
ANCIENT INDUSTRIES
ancientindustries.co.uk
ANGLEPOISE 02392 224 450
anglepoise.com
ANOTHER COUNTRY
020 7193 5692
anothercountry.com
ANTHROPOLOGIE
020 7529 9800
anthropologie.eu
ARAM STORE 020 7557 7557
aram.co.uk
ART FIRST 020 7734 0386
artfirst.co.uk

B&Q 0333 014 3357
diy.com
BAUHAUS 0845 873 8840
bauhaus-bathrooms.co.uk

BETTE 0844 800 0547
bette.co.uk
BISQUE 020 7328 2225
bisque.co.uk
BLENHEIM CARPETS
020 7823 3040
blenheim-carpets.com
BLOOMINGVILLE
bloomingville.dk
BOCONCEPT
boconcept.co.uk
BOFFI 020 7629 0058
boffi.com
BOSCH 0844 892 8979
bosch-home.co.uk
BRINTONS 0800 505055
brintons.net
BY LASSEN 045 36 16 80 00
bylassen.com

C **CAPLE** 01179 381900
caple.co.uk
CARL HANSEN
carlhansen.com
CHAPLINS 020 8421 1779
chaplins.co.uk
CHEVILLE PARQUET
020 7183 6352
cheville.co.uk
CHLOE ALBERRY
020 7727 0707
chloealberry.com
CLIPPINGS.COM
020 7060 7422
clippings.com

COCHRANE DESIGN
020 7062 1064
cochrandedesign.com
COX & COX
0844 858 0734
coxandcox.co.uk
CROSSWATER
0845 873 8840
crosswater.co.uk
C.P. HART 0845 600 1950
cphart.co.uk

D **DAVID MELLOR**
01433 650220
davidmellordesign.com
DEVON & DEVON
020 7221 5137
devon-devon.com
DIVERTIMENTI
0870 129 5026
divertimenti.co.uk
DORNBRACHT
02476 717129
dornbracht.com
DUALIT 01293 652500
dualit.com
DUPONT dupont.co.uk
DYSON 0800 298 0298
dyson.co.uk

E **ECO HOME CONSTRUCTION**
0788 245 9624
ecohomeconstructions.co.uk
ELICA 01252 351111
elica.co.uk

F **FARROW & BALL**
01202 876141
farrow-ball.com
FERN & ROBY
001 804 233 5900
fernandrobby.com
FIREPLACE SUPERSTORE
0161 488 4991
fireplacesuperstore.com
FIRE EARTH
0845 366 0400
fireearth.com
FISHER & PAYKEL
0845 066 2200
fisherpaykel.co.uk
FLOCK LIVING
020 8440 8777
flock-living.com
FOLKLORE 0207 354 9333
shopfolklore.com
FRANKE 01614 366280
franke.co.uk
FRENDS wearefriends.com

G **GAGGENAU**
0844 892 9026
gaggenau.co.uk
GARDEN TRADING
0845 608 4448
gardentrading.co.uk
GOOD LONDON BUILDERS
0207 978 5097
goodlondonbuilders.com
GO MODERN 020 7731 9540
gomodern.co.uk
GROHE 0871 200 3414
grohe.co.uk

H&M 0844 736 9000
hm.com
HABITAT 0844 499 1111
habitat.co.uk
HARRODS 020 7730 1234
harrods.com
HANS GROHE 01372 465655
hansgrohe.co.uk
HEAL'S 0870 024 0780
heals.co.uk
HERITAGE BATHROOMS
0844 701 8501
heritagebathrooms.com
HOLLOWAYS OF LUDLOW
020 7602 5757
hollowaysoftudlow.com
HOUSE OF FRASER
0845 602 1073
houseoffraser.co.uk
HOUSEOLOGY
0330 363 0330
houseology.com
HURLINGHAM BATHS
01400 263 310
hurlinghambaths.co.uk

I & JL BROWN
020 7736 4141
brownantiques.com
ICONIC RADIATORS
01342 302 250
iconicradiators.co.uk
IDEAL STANDARD
01482 346461
ideal-standard.co.uk
INDIA JANE 020 8799 7166
indiajane.com
INSINKERATOR 01923 297880
insinkerator.co.uk
IKEA 0845 358 3363
ikea.com

J **JOHN LEWIS**
0845 604 9049
johnlewis.com

JOHNSON TILES
01782 575575
johnson-tiles.com
JUNCKERS 01376 534 700
junckers.co.uk

K **KALDEWEI**
0800 840 9770
kaldewei.com
KELLY HOPPEN
0845 017 8995
kellyhoppenshutters.com
KERAMAG DESIGN
0844 371 5062
keramagdesign.com
KLOPPER AND DAVIS
ARCHITECTS 089 381 4731
kada.com.au

L **LAUFEN** 01530 510007
uk.laufen.com
LEE BROOM
020 7820 0742
leebroom.com
LIBERTY 020 7734 1234
liberty.co.uk
LIBRATONE
libratone.com
LIEBHERR 08444 122 655
myliebherr.co.uk
LONDON DESIGNER FURNITURE
020 8546 1977
londondesignerfurniture.com
LONDON EDITION
020 7781 0000
editionhotels.com/london
LONDON TRANSPORT MUSEUM
ltmuseumshop.co.uk

M **MADE IN DESIGN**
020 7692 4001
madeindesign.co.uk
MANDARIN STONE
01600 715444
mandarinstone.com



Contacts

The fastest way to find your dream kitchen, bathroom and bedroom!



FOR FURTHER INFORMATION ON
EKBB ADVERTISERS SIMPLY CLICK ON...

www.ekbbmagazine.co.uk/responses

MARK WILKINSON FURNITURE
01380 850007
mwf.com
MATKI 01454 322888
matki.co.uk
MIELE 0845 365 6603
miele.co.uk
MODULEO 01332 851500
moduleo.co.uk
MURMUR murmur.co.uk
MUUTO muuto.com

NIKA ZUPANC
nikazupanc.com

OKELLS GARDEN CENTRE
01829 741512
okellsgardencentre.co.uk
ORIGINAL STYLE
01392 473000
originalstyle.com

PINCH 020 7622 5075
pinchdesign.com
PLANTATION RUG COMPANY
plantationrug.co.uk
POGGENPOHL 0800 298 1098
poggenspohl.com
PURE LINEN purelinen.com.au

QUICK-STEP
0032 566 75211
quick-step.com
QUOOKER 020 7923 3355
quooker.co.uk

RALPH LAUREN HOME
020 7535 4600
ralphlaurenhome.com
RATIO
ratiocoffee.com
REXA DESIGN
rexadesign.it
ROCA 01530 830080
uk.roca.com
ROCKETT ST. GEORGE
01444 253375
rockettstgeorge.co.uk
ROUNDHOUSE DESIGN
020 7736 7362
roundhousedesign.com
RICH BRILLIANT WILLING
0212 388 1612
richbrilliantwilling.com
RIPPLES 0800 107 0700
ripples.ltd.uk

SELFRIDGES
0800 123 400
selfridges.com
SIEMATIC 01612 466010
siematic.co.uk
SIEMENS 0844 892 9044
siemens-home.co.uk
SILESTONE 01256 761229
silestone.co.uk
SIMPSONS 0845 873 8840
simpsons-enclosures.co.uk
SMEG 0844 557 9907
smeguk.com
SHERIDAN 01925 214900
sheridanuk.com
SOLA KITCHENS
020 3004 0898
solakitchens.com

SUB-ZERO 0845 250 0010
subzero-wolf.co.uk
SURFACE FORM
0208 816 8160
surfaceform.com
STONE VALE 01423 815416
stonevale.co.uk

TALKING TABLES
020 7627 6767
talkingtables.co.uk
TED BAKER tedbaker.com/uk
TED TODD HARDWOOD FLOORS
01925 283000
tedtodd.co.uk
TEUCO 020 7608 3090
teuco.co.uk
THE 1810 COMPANY
01978 660770
the1810company.co.uk
THE CHESHIRE KITCHEN COMPANY 01829 781666
thecheshirekitchencompany.com
THE CONRAN SHOP
0844 848 4000
conranshop.co.uk
THE SOFA & CHAIR COMPANY
0208 752 8935
thesofaandchair.co.uk
THE WHITE COMPANY
0844 736 4222
thewhitecompany.com
THE WINCHESTER TILE COMPANY
01392 473005
winchestertiles.com
TILE MOUNTAIN
01782 223828
tilemountain.co.uk
TINE K HOME tinekhome.com
TIVOLI 45 33 15 10 01
tivoli.dk/en
TOM KITCHIN 0131 555 1755
thekitchen.com
TOPPS TILES 0800 023 4703
toppstiles.co.uk
TORI MURPHY
07958 688519
torimurphy.com
TWENTYTWENTYONE
020 7288 1996
twentytwentyone.com

URBANARA
0800 779 7527
urbanara.co.uk
URBAN COTTAGE INDUSTRIES
020 7193 2119
urbancottageindustries.com

VADO 01934 744466
vado-uk.com
VALSPAR valsparpaint.com
VIPP 00 45 45 88 88 15
vippp.com/en
VOLA 01525 841155
vola.com

WESTIN DESIGN
01484 421585
westin.co.uk
WHARF SIDE 020 7253 3206
wharfside.co.uk

ZUCCHETTI 0039 0322 954700
zucchettikos.com/en

• AGA	26-27	• SMEG	87
• ALNO	OBC	• SUB-ZERO & WOLF	39
• BARBARA GENDA BESPOKE FURNITURE	177	• TOM HOWLEY	47
• BRITTANNIA LIVING	59	• VARENNA BY POLIFORM	23
• CAESARSTONE	76-77	• VIEGA	163
• CAPLE	118	• VITRA	145 & 151
• CHARLES YORKE	4-5 & 156-157	• WEST ONE BATHROOMS	132
• CHARNWOOD	16		
• CLIVE CHRISTIAN	IFC & 3	CLASSIFIED	
• DAVONPORT	88	• ABODE	
• DEKTON BY COSENTINO	92	• AMERICAN SHUTTERS	
• DURAVIT	130	• BATHROOM DISCOUNT CENTRE	
• EDMONSON INTERIORS	20	• BESPOKE IN OAK	
• ESPRESSO DESIGN	78	• BIBLIOTHEQUE	
• HOOVER CANDY	109	• CIFIAL	
• IDEAL STANDARD	158	• DEVOL KITCHENS	
• JOHN LEWIS OF HUNGERFORD	12	• DESRES DESIGN	
• LAURA ASHLEY BY ROPER RHODES	135	• HICKS & HICKS	
• LEISURE	75	• JOHN LADBURY AND COMPANY	
• MARK WILKINSON	25	• MATRIX KITCHENS	
• MASTERCLASS KITCHENS	6-7	• OSMO	
• MATKI	136-137	• PHILIP WATTS DESIGN	
• MIELE	85	• QUEENLINE KITCHENS & BATHROOMS	
• MOWLEM	91	• QUERCUS BEDS	
• NEPTUNE	69	• RUGBY FITTED KITCHENS	
• POLIFORM	15	• SECOND NATURE	
• PORCELANOSA	10	• STONE AND CERAMIC WAREHOUSE	
• QUOOKER	IBC	• THE ALBION BATH CO.	
• RANGEMASTER	18	• THE HUNTER FAN COMPANY	
• ROCA	101	• THE SUSSEX RANGE	
• SMALLBONE OF DEVIZES	8-9	• WARREN EVANS	

Subscribe now for only £8.50*

OCTOBER OFFER TREAT YOURSELF TO THREE ISSUES AT THIS SPECIAL PRICE



By becoming a subscriber, you'll be the first to see our selection of inspirational ideas for your kitchen, bathroom and bedroom



Download the new mobile edition of *eKBB* on your iPad, iPhone, Android device, PC or Kobo eReader!



TO SUBSCRIBE, VISIT ***essentialsubscriptions.co.uk*** CALL 01778 392471
OR EMAIL US AT ***subscriptions@warnersgroup.co.uk***

*For a postal subscription: Direct Debit for only £8.50 including delivery for three issues (Special October offer for UK only). Your subscription will automatically renew every quarter. You can cancel a Direct Debit at any time simply by contacting your bank or building society. Written confirmation may be required. Please also notify us via email at subscriptions@warnersgroup.co.uk. Other costs are as follows: **Europe** (airmail) £95 **USA** £120 **Rest of world** (airmail) £145.
**Choose from the following payments for an app subscription: 3 back issue bundle for £7.99 or 1 issue for £2.99. 3 month recurring subscription for £7.99. 6 month recurring subscription for £16.99.

KITCHENS



John Ladbury and Company

Unit 11 Alpha Business Park, Travellers Close,
Welham Green, Hertfordshire AL9 7NT

Telephone: 01707 262966

www.johnladbury.co.uk



EKBB Classified



MATRIX KITCHENS
KNIGHTSBRIDGE

10 Thurloe Place
Knightsbridge
London,
SW7 2RZ

Tel: 020 7808 0340
design@matrixkitchens.co.uk
www.matrixkitchens.co.uk

KITCHENS

For contemporary or classic design visit RFK and see the Midland's best, award winning, independent kitchen showroom...





RFK KITCHENS
Burbridge
The Old Mill, Leamington

Award Winning Luxury Fitted Kitchens . . .

RFK Rugby, Cottage Leap,
Rugby, CV21 3XP
Tel: 01788 547647
www.rfkkitchens.co.uk

RFK Warwick, 47 Coten End,
Warwick, CV34 4NT
Tel: 01926 419165
www.nobiliabyRFK.co.uk

BESPOKE IN OAK



"EXCEPTIONAL
QUALITY KITCHENS
AT AFFORDABLE PRICES."

Solid Oak Cabinets Dovetailed Throughout British Factory

"One of the things we're incredibly proud of here at Bespoke In Oak is the fact that when we make a kitchen it is 100% solid oak, from doors to drawers to carcasses. We will see your project through from design to fitting and keep you well informed throughout the process. We can also supply bathroom, bedroom and other stand-alone furniture to compliment your existing décor. It can be any height, width or colour. It's up to you! Our promise to you is that all cabinets are solid oak and dovetail jointed meaning that you will own a piece of furniture that's built to last a lifetime."

Serving Customers Throughout the UK

Call For An Appointment

01604 372 025

www.bespokeinoak.com

East Haddon Hill, East Haddon, Northamptonshire, NN6 8DS

FURNITURE

HICKS & HICKS
The online interiors store for homes of distinction



www.hicksandhicks.com
FREE DELIVERY Tel: 01872 530761



deVOL Kitchens

www.devolkitchens.co.uk - 01509 261000

nymph the beautiful new door handle
by philip watts

www.philipwattsdesign.com

For further information on EKBB advertisers, and to request a brochure,
simply click on www.ekbb.co.uk/responses

BATHROOMS



CIFIAL UK LTD
tel: 01933 402008
www.cifial.co.uk

FLOORING TILES



THE STONE AND CERAMIC WAREHOUSE
51-55 STIRLING ROAD, LONDON, W3 8DJ

WWW.SACW.CO.UK

020 8993 5545

SHUTTERS



20 years of experience

02392 597967

sales@americanshutters.co.uk

BATHROOMS

What makes an Albion Bath unique?

Our exclusive Iso Enamel material creates a difference you can feel....

Take a look at our hand made baths and bathroom suites. Formulated from our unique Iso-Enamel material, an Albion bath has all the qualities of cast iron but without the drawbacks, such as extreme weight and heat loss. With over 50 different models to choose from, we'll have you spoilt for choice. Remember, its not just baths that we are known for - choose from classical or modern bathroom collections including taps, showers and fine sanitaryware. Your new bathroom awaits.

ALBION

Handmade bathrooms directly from our factory

Request your brochure: **Call 01255 831605** or go to: www.albionbathco.com

Aegean bath shown - 2 sizes available

BATHROOMS

Bathroom Discount Centre

297 Munster Road,
Fulham, London
SW6 6BW



OPEN 7
DAYS A
WEEK

Mon-Fri ~ 8.30am-6.00pm
Wednesday open until 8pm
Sat & Sun ~ 9.00am-5.00pm



0207 381 4222

www.bathdisc.co.uk

HEATED TOWEL RAILS

The **sussex**
Range

The original and finest 100% stainless steel towel rails & radiators
Please call for a brochure and your nearest dealer



Tel. 01444 831200 Fax. 01444 831900 info@jiseurope.co.uk
www.sussexrange.co.uk

KBSA



**SECOND
NATURE**
By Local Specialists

T: +44(0)1325 505539
E: mail@sncollection.co.uk
www.sncollection.co.uk

To advertise in EKBB contact
VICTORIA JENNINGS on 01206 851117

**You cannot afford to buy a new kitchen until you
have read this number 1 best-selling book.**

*Buying a new kitchen should be
simple, exciting and fun – the
information in this book helps
to make it so.*

'A must for kitchen buyers'



Available now at www.Amazon.co.uk

WASTE DISPOSAL

Why Waste Force?

Help stop this...



...by recycling waste food into electricity...



...using this.



A Waste Force disposal unit can rapidly get rid of all food waste that other disposers cannot grind including fruit husks, fruit stones, poultry and fish bones.

- 10 Year Guarantee
- Never jams
- Stop bad smells flies and health hazards
- Saves space, time and mess
- Easy to fit
- Many great features



Order now on
01256 636 509
www.waste-force.com

FLOOR TILES

BIBLIOTHEQUE LTD
SUPPLIERS OF MAN MADE STONE & WOOD,
PORCELAIN TILES & ECO GLASS MOSAICS

Porcelain Marble - Apuano

London Showroom
Tel: 020 8365 2084

Hertfordshire Showroom
Tel: 01707 649 932

www.bibliotheque.co.uk

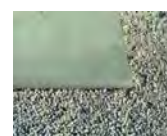


TERRACE & PATIO
PAVING



BALCONY
BBQ AREA
GARDEN
COURTYARD
TERRACE
PAVING
DRIVEWAY
PATIO

20MM PORCELAIN PAVING



THE STONE & CERAMIC WAREHOUSE
51 - 55 STIRLING ROAD, CHISWICK,
LONDON, W3 8DJ

020 8993 5545

WWW.SACWPAVING.CO.UK

WOOD FINISHES

Wooden worktops...

...love TopOil

The Ultimate protection for your wooden worktop

- > Resistant to common stains: wine; beer; drinks and fruit juice.
- > Will not crack, peel or blister.
- > Highest coverage of any oil on the market.

Call or visit the web for stockists.

+44 (0)1296 481 220
www.osmouk.com

osmo



LIGHTING

DES RES
HOME DECOR & LIGHTING

call for a brochure

timeless style with edgy vibes

t: 01386 793240 • www.desresdesign.co.uk

Don't forget to mention EKBB when replying to adverts

BEDROOMS

Warren Evans
warrenevans.com | 020 7693 8988

50% OFF
SALE

'SLATTED' DOUBLE BED
£510
£390

Our 'Meadow' 2000 Pocket Sprung double mattress ~~£565~~ **£445**

★★★★★ mattress quality ★★★★★ mattress range ★★★★★ value
Which? members survey June (2015)

KBSA

abode

distinctly

For brochures and enquiries
01226 283434
www.abode.eu

To advertise in EKBB contact
VICTORIA JENNINGS on 01206 851117

quercus
luxury handmade beds since 1803

Handmade by master craftsmen
to stand the test of time.

Money back promise • Free delivery & installation

Over 200 years of British craftsmanship

quercusbeds.co.uk | 01777 869 669

FLOOR TILES

BIBLIOTHEQUE LTD

SUPPLIERS OF MAN MADE STONE &
WOOD, PORCELAIN TILES &
ECO GLASS MOSAICS

020 8365 2084
www.bibliotheque.co.uk

KBSA Retailer Directory

*Here is just a selection of KBSA retailers
who can help turn your dream kitchen into a reality*

To advertise in the KBSA Retailer Directory call Victoria Jennings on 01206 851117

Aberdeenshire

denmore
kitchenandbathroomstudio

14 silverburn place
bridge of don
aberdeen ab23 8eg
tel: 01224 826776
fax: 01224 707437
email: info@denmorekitchens.co.uk

Ayrshire

U.K. Kitchen Retailer of the Year 2015
by
kitchens
J.S. Geddes

- 10/12 West Netherton Street,
Kilmarnock KA1 4BU
Tel: 01563 530838
- Hayes Gardenland, Tarbolton Road,
Symington KA1 5PD
Tel: 01563 831340
www.jsGEDDES.com

Berkshire

elements
KITCHENS • INTERIORS

8b Portman Rd Reading RG30 1EA
T 0118 959 9919
www.elementskitchens.co.uk

Buckinghamshire

kitchenart
bespoke furniture

Design and Install Beautiful Kitchens
Over 27 years at our
Farnham Common Showroom

5-6 THE CENTRE BEACONSFIELD ROAD
FARNHAM COMMON BUCKINGHAMSHIRE SL2 8QQ
T. 01753 646631 kitchenartonline.co.uk

Cambridgeshire

Nicholas
Anthony

120 East Road, Cambridge
CB1 1DB

Tel: 01223 368 828
www.nicholas-anthony.co.uk

Ascot

Nicholas
Anthony

65 High Street, Ascot
Berkshire SL5 7HP

Tel: 01344 624 829
www.nicholas-anthony.co.uk

Bedfordshire

AngliaInteriors Ltd

Affordable Kitchens bedrooms and home office since 1974

Anglia House, Wolseley Business Park,
7 Railton Road, Woburn Road Ind Est, Kempston,
Bedford MK42 7PN Telephone: 01234 843000

NEVER UNDERSOLD POLICY
we will not be beaten on price for a true
'like for like' package

Buckinghamshire

DESIGN matters
QUALITY KITCHENS • EXPERT DESIGN

Aries House, Straight Bit, Flackwell Heath, HP10 9NB.
Tel: 01628 531584 | www.dmkbb.co.uk

Cambridgeshire

AngliaInteriors Ltd

Affordable Kitchens bedrooms and home office since 1974

Anglia House, 13 Stonehill,
Huntingdon, Cambridgeshire PE29 6ED
Telephone: 01480 398018

NEVER UNDERSOLD POLICY
we will not be beaten on price for a true
'like for like' package

Cumbria

MIKE HUGHES
KITCHENS & BEDROOMS
FITTED INTERIORS

8 Meetings Ind Est, Park Rd,
Barrow-in-Furness, Cumbria LA14 4TL
Tel: 01229 871122
e.mail-sales@mikehughes.co.uk
www.mikehughes.co.uk

Derbyshire

creative interiors
kitchens bathrooms bedrooms
Derby
39 Duffield Road, Derby DE1 3BH
Tel: 01332 384 444
showroom open 7 days a week
Est. 1969
www.creativeinteriors.co.uk

KEDLESTON INTERIORS
Specialists in Kitchens, Bathrooms and Bedrooms
61 KEDLESTON ROAD, DERBY DE22 1FL
Telephone: 01332 295031
Facsimile: 0845 2803328
Email: kedleston@btconnect.com
www.kedlestoninteriors.com

Devon

BRADBURY'S
the **ALNO** store
Denbury Court, Matford Park,
Exeter EX2 8NB
01392 825940
www.bradburysltd.co.uk

ASHGROVE KITCHENS LIMITED
Beautiful kitchens, beautifully made in Devon.
freephone 0800 0683291
www.ashgrovekitchens.co.uk

Dorset

HALE & MURRAY
Custom Made Kitchens,
Bedrooms, Bathrooms and
Home Office Furniture
3 Abingdon Rd, Nuffield Ind Est,
Poole, Dorset BH17 0UG
01202 678431
haileandmurray.co.uk
admin@haileandmurray.co.uk

Edinburgh

kitchens INTERNATIONAL
Edinburgh Showrooms
117 Dundas Street, Stockbridge, EH3 5EB
0131 523 0477
24 Westfield Road, Murrayfield, EH11 2QB
0131 337 3434
www.kitchensinternational.co.uk

Essex

Nicholas Anthony
43-45 London Road, Lexden,
Colchester, Essex CO3 9AJ
Tel: 01206 363 200
www.nicholas-anthony.co.uk

B & R BARNES
Kitchens and Bedrooms Ltd
Established 1945
Specialists in English & Continental
Kitchens & Bedrooms
313 London Road, Westcliff-on-Sea, Essex SS0 7BX
Tel: 01702 345302 Fax: 01702 338410
Email: info@kitchens-1st.com
www.kitchens-1st.com

paulnewman interiors
136 High Street,
Hadleigh, Essex, SS7 2PB
T: 01702 552 868
E: info@paulnewmaninteriors.co.uk
www.paulnewmaninteriorsltd.co.uk

CKi Kitchens
The Insurance Centre, Clacton Road,
Elmstead Market, Colchester,
Essex CO7 7AA
www.clkitchens.co.uk
Tel: 01206 366330

East Sussex

HKS
Kitchens ♦ Bedrooms ♦ Bathrooms ♦ Studies
Eastbourne 01323 639446
Heathfield 01435 865599
St. Leonards 01424 443464
Haywards Heath 01444 452222
www.hks-uk.com

Hampshire

Basingstoke's Premier
Kitchen & Bathroom Showroom
TWO GUYS KITCHENS No.1 for service
Showroom: Armstrong Road, Daneshill
East, Basingstoke, Hampshire, RG24 8NU
t. 01256 363123
www.twoguys.co.uk

Hertfordshire

mark david
Dorchester for Best Kitchens, Show
Kitchens, Bathrooms & Bedrooms
41 London Road, Sawbridgeworth,
Hertfordshire CM21 9EH
Tel: 01279 868800
email@markdavid.co.uk
www.markdavid.co.uk
From affordable to luxury kitchens...
Mark David is the complete package

**75 YEARS OF LUXURY KITCHENS
BEDROOMS AND BATHROOMS**
Dobsons
beautiful homes - inside and out
SHOWROOM: HERTS EN8 9BN
01992 62 30 66
www.dobsonshome.com

Kent

RUACH DESIGNS
UNIT 3,
WESTERHAM
TRADE CENTRE
THE FLYERS WAY
WESTERHAM
KENT
TN16 1DE
FREEPHONE: 0800 0185797
www.ruachdesigns.co.uk

ream
Design you love.
Quality you expect.
Service you deserve.
www.ream.co.uk
10 & 11 Matilda Close, Gillingham Business Park,
Gillingham, Kent ME8 0PY
Tel: 01634 799913

Lancashire

ALNO by diane berry kitchens
Multi award winning company
132 Bury New Road
Prestwich,
Manchester M25 0AA
Tel: 0161 798 5335
www.dianeberrykitchens.co.uk

Leicestershire

Specialists in
Fitted Kitchens
since 1957
98 Granby Street,
Leicester LE1 1DJ
Tel: (0116) 2555745
www.dewhirstkitchens.co.uk

London

Nicholas Anthony
44-48 Wigmore Street,
London W1U 2RY
Tel: 0207 935 0177
www.nicholas-anthony.co.uk

Nicholas Anthony
172 Brompton Road, London
SW3 1HW
Tel: 0207 838 0588
www.nicholas-anthony.co.uk

halcyon INTERIORS
the **ALNO** store
120 Wigmore Street, London, W1U 3LS
509 Uxbridge Road, Hatch End, HA5 4JS
77-79 Wycombe End, Beaconsfield, HP9 1LX
Tel: 020 7486 3080
www.halcyon-interiors.co.uk

ROOMS KITCHEN SPECIALISTS
49 Mottingham Road
London SE9 4QZ
Tel: 020-8857 5699
Fax: 020-8857 7425
www.roomskitchens.co.uk

ream
Design you love.
Quality you expect.
Service you deserve.
www.ream.co.uk
758 Sidcup Road, Fiveways, New Eltham,
London SE9 3NS
Tel: 020 8166 8177

Perthshire

CALLUM WALKER INTERIORS
Ruthvenfield Road, Inveralmond, Perth
www.callumwalker.com

kitchens INTERNATIONAL
Perth Showroom
16-18 Princes Street, PH2 8NG
01738 639 090
www.kitchensinternational.co.uk

Sheffield

DIRECT KITCHENS
1 Ecclesfield Road
Chapelton
Sheffield
S35 1TD
Tel: 0114 2400660
Fax: 0114 2576175

PRINCESS design
THE RIGHT CHOICE
inspirational kitchens, bedrooms & bathrooms
Creative Kitchen and Bathroom Solutions
19 Brunswick Street, Newcastle under Lyme,
Staffordshire, ST5 1HF
Tel: 01782 610000 Fax: 01782 610050
www.princessdesign.co.uk

Suffolk

KSL
Kitchens, Bathrooms and Bedrooms
Churchfield Business Park,
Churchfield Road,
Sudbury, Suffolk CO10 2YF
www.kslsudbury.co.uk
01787 378250

anglia FACTORS
KITCHENS, BATHROOMS
BEDROOMS, HOME OFFICES
BESPOKE INTERIORS
www.angliafactors.co.uk
01473 610 192

West Midlands

PRINCESS design
THE RIGHT CHOICE
inspirational kitchens, bedrooms & bathrooms
Creative Kitchen and Bathroom Solutions
14b -14c Birmingham Road,
Sutton Coldfield, West Midlands B72 1QG
Tel: 0121 354 9777 Fax: 0121 354 9202
www.princessdesign.co.uk

Yorkshire

DENBY KITCHEN COMPANY
Quality fitted Kitchens & Bathrooms
Tel: 01484 865670
www.denbykitchencompany.co.uk
Unit 1, Denby Dale Industrial Park, Wakefield Road,
Denby Dale, Huddersfield HD8 8QH

*To advertise in the KBSA Retailer Directory
call Victoria Jennings 01206 851117*

The Essential Directory

Sponsored by



BATHROOM CITY


Open 7 Days A Week

0121 753 0700 | 15 Seeleys Road
Tyseley, Birmingham **B11 2LQ**

www.bathroomcity.com

UK's Largest Factory Outlet

ESSENTIAL APPLIANCES



Sinks, Taps, Cooker Hoods & Accessories
1 Victor Way
Colney Street
St Albans
AL2 2FL
Tel: 01923 635 200
www.blanco.co.uk

BLANCO
GERMANY



caple

www.caple.co.uk

0117 938 1900
sales@caple.co.uk



Amica

ZEN
No timers, no alarms
just cooking genius
- quietly.

www.amica-international.co.uk

Looking for help with your new Kitchen or Bathroom?

Go to www.kbsa.org.uk to download our Consumer Guide & Charter - full of invaluable hints and tips. You can also select brochures from Neff, Miele & many more...

kbsa
the home specialist association
APPROVED



SUB-ZERO WOLF

0845 250 0010
subzero-wolf.co.uk

ESSENTIAL SINKS & TAPS

THE UNDERMOUNT SINK SPECIALISTS

See our full range at
www.the1810company.co.uk

Unit 7, Bromfield Commercial Park,
Mold, Flintshire CH7 1HE
t. +44 (0) 1978 660 770 f. +44 (0) 1978 660 771
e. sales@the1810company.co.uk

1810
THE 1810 COMPANY

V-ZUG

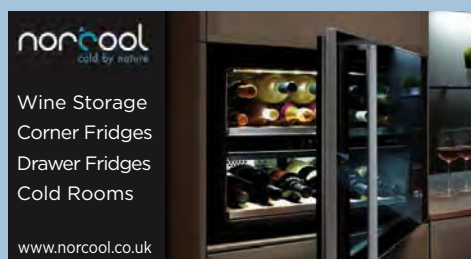
Premium Quality Kitchen Appliances from Switzerland

www.vzug.co.uk

0843 289 5759 • info.uk@vzug.com

V ZUG

+ Premium Swiss Quality



norcool
cold by nature

Wine Storage
Corner Fridges
Drawer Fridges
Cold Rooms

www.norcool.co.uk

FRANKE

Tel: 0161 436 6280
www.franke.co.uk



LIEBHERR

Quality, Design and Innovation

National Salesline 03330 147 888
Email sales.ukrefrigeration@liebherr.com
Website myliebherr.co.uk



See more of our stunning kitchens at
tec-kitchens.com

01621 850115
info@tec-kitchens.com

tec-kitchens
Kitchens & Bathrooms to inspire you

Call 0161 436 6280 or visit www.carron.com

CARRON
PHOENIX



GAGGENAU

Gaggenau Showroom
40 Wigmore Street,
London W1U 2RX

Consumer enquiries: 0844 892 8988
Dealer enquiries: 0844 892 8929
Website: www.gaggenau.co.uk

THE NEW SINK & TAP COLLECTION FROM
BRITAIN'S NO. 1 SINK MANUFACTURER.

RANGEmaster
sinks & taps

www.rangemastersinks.co.uk
Tel: 0870 789 6110



KWC
Swiss Water Experience

www.kwctaps.co.uk


TO PROMOTE YOUR COMPANY IN THIS SECTION CALL VICTORIA JENNINGS ON 01206 851117 ext 222

Sponsored by



BA AWARDS 2015

REWARDING
CREATIVITY
HONOURING
LOYALTY &
ACKNOWLEDGING
COMMITMENT



**CELEBRATING
BA
25 Years
1990-2015**

**BA PART OF
SOMETHING
SPECIAL**

19TH NOVEMBER 2015

ESSENTIAL WORKTOPS



DECO GLAZE
Suppliers of the ultimate 10mm worktop

www.decoglaze.co.uk

ESSENTIAL KITCHENS



HOLME TREE
BESPOKE FURNITURE

Designed and made in Leicestershire for your home.

01530 564561
www.holmetree.co.uk

ESSENTIAL KITCHENS

FULL PROJECT MANAGEMENT & DESIGN SERVICE FOR
PROPERTY DEVELOPERS | SELF BUILD PROJECTS |
ARCHITECTS | COMMERCIAL ENTERPRISES | HOMEOWNERS

Lisa Melvin
DESIGN

01788 866996 | WWW.LISAMELVINDESIGN.CO.UK




BUSHBOARD

Sensational surfaces for kitchens
To find out more go to www.bushboard.co.uk,
email help@bushboard.co.uk or call us on 01933 232 272



Sophisticated simplicity

poggenpohl

SEGMENTO
Poggenpohl UK, 100 London Road, St Albans, Herts. AL1 1NK
Tel: +44(0) 1727 730100
poggenpohl.com



Natural Bed Company
www.naturalbedcompany.co.uk

Call us on: 0114 272 1984

pietra solid surface worktops

It's all in the detail

DERALAM

Deralam Laminates Ltd, West Coast Park, Bradley Lane, Standish, Wigan, WN6 0YR
National Sales Line: 01257 478540
Fax: 01257 478550
Email: sales@deralam.co.uk
www.deralam.co.uk




BA part of it
The choice you make, made better

Cookstown +44 (0) 28 8676 4600
Doncaster +44 (0) 1302 890555
mail@bacomponents.co.uk
www.byba.co.uk

The search for the perfect range cooker is over

britannia
Your life. Our passion

Contact us today on **0843 507 3431**
www.britanniainliving.co.uk



TOP QUALITY STAINLESS STEEL



Worktops Splashbacks Panels Doors

Tel 01442 82 6999
www.gecanderson.co.uk

GEC ANDERSON
the stainless steel specialists

RFK KITCHENS

RFK Kitchens, Cottage Leap, Rugby, CV21 3XP
Tel: 01788 547647
www.RFKkitchens.co.uk

RFK Warwick, 47 Coten End, Warwick, CV34 4NT
Tel: 01926 419165
www.nobililabyRFK.co.uk

Terence Ball Kitchens
A name you can trust



- High Quality Cabinets (All Egger Finishes)
- Bespoke Manufacturing
- Over 250 Door Ranges
- Unbeatable Industry Advice & Service
- Deliveries Throughout the UK

www.terenceballkitchens.co.uk
sales@terenceballkitchens.co.uk
01984 624640

ESSENTIAL SPLASHBACKS

UK SPLASHBACKS



Tailor made & fully fitted toughened glass splashbacks in any size, shape & colour

Tel: 0800 232 1149
www.uksplashbacks.com

Beautiful British Furniture,
Designed with Care,
Fitted by Craftsmen.

Covering
Buckinghamshire

0844 579 6075

Domus
Kitchens and bedrooms

www.domuskitchensandbedrooms.co.uk

SCHMIDT
KITCHENS



Schmidt Kitchens UK
01622 812123
www.schmidt-kitchens.com

Sir Terence CONRAN

In the world of design, Sir Terence Conran is something of a demi-god, who has been at the forefront of his industry for the last six decades

INTERVIEW SUSAN SPRINGATE

Now in his 80s, Sir Terence Conran's revolutionary Habitat chain, and The Conran Shop, have brought good design to the masses, while his well-known restaurants Le Pont de la Tour, Quaglinos and Bibendum redefined fine dining in the capital in the 80s and 90s. He continues to design furniture for Content by Conran and has published more than 50 books, the most recent being 'Conran on Colour'. He has five children – Ned, Sebastian, Jasper, Tom and Sophie – who all work in fashion, art, design and food businesses, and he lives in London with his fourth wife, Vicki.

Can you recall the moment you discovered your passion for making?

As a small child I remember my favourite present was a bag of wooden offcuts, lots of nails and a pretty basic tool kit. After much pestering, my mother gave me a space for a small workshop and allowed me to set up a wood-fired pottery kiln. There is no doubt this was the point where I first began to develop the curious mind of a designer as well as the entrepreneurial mind of a retailer.

Any personal kitchen design classics?

One of my personal favourite pieces is a version of my Bibliothèque table that I had commissioned for my own kitchen. It is a simple and robust piece that looks just wonderful with friends and family all sat round; it really is the centre of family life. I am a huge admirer of Mauviel Copper Cookware too, they are a French family-run firm based in Normandy, who have been making their classic copper cookware since 1830. I'm also a big fan of Kilner jars, Moka espresso pots, David Mellor cutlery and Le Creuset cookware.

Tell us about one of the most precious things in your home? The thing I like best about my house is my collections. I have

little museums around the house and particularly like my glass pieces, I have industrial glass, laboratory glass, 18th century drinking glasses and agricultural pieces. I love its transparency, lightness and the traditional shapes the craftsmen have formed. I also have a collection of 19 Bugatti pedal cars that I have hung in the entrance hall of my country house.

Who has been your greatest influence?

When I was at Bryanston school I was enormously influenced in the arts and crafts by Don Potter (a pupil of Eric Gill) and by Charles Handley Reed who made the History of Design fascinating. At the Central school, Eduardo Paolozzi and his work became my greatest influence, which has continued to this day. On the food side meanwhile, I would still be eating spam fritters if Elizabeth David had not had such an astounding influence on creative young people in the 1950s. She really did cause a food revolution.

Any tips on turning a dreary space into an attractive one? Flood the room with natural light if at all possible. Fit dimmer switches to create pools of light and partner shadow. Put paintings on the wall or, perhaps more simply, display some flowers that you like. The least inspiring rooms are filled with things you'd expect.

What do you think makes a house a home? You do, with your character and personality and by choosing things that make you happy and comfortable.

What is your greatest legacy? I don't think it's my own personal legacy, that would be very vain, but I do think the important work many people in the industry have done over the last 60 years has made design more accessible and relevant to people's lives. **EKBB** conranshop.co.uk



Above New this year is the Stanford sideboard, £999, from Content by Terence Conran. Left The Matador armchair is a distinctive piece with curved sides and a tapered back, £1,295 as shown Below This smart four-seater Studio sofa has duck feathers in the seat cushions, and is priced at £2,495, as shown. Photos by Jake Curtis



NEW: Quooker® FUSION

Hot, cold and 100°C boiling-water from a single tap, complete with childproof push-and-turn handle. All from a cold feed.



SEE A WORKING QUOOKER - Live displays in over 1,000 kitchen showrooms nationwide

A Quooker tap has to be seen to be believed that's why we have installed one in over 1000 showrooms nationwide. A Quooker tap saves time, energy, money and water. You can see a list of all the displaying dealers at Quooker.co.uk

HISTORY - Over 40 years in the making - that's why all boiling water taps are not the same

When engineer Henri Peteri was working on the development of instant soup in the late 1960s for an international food company, he realised that soup would never be 'instant' without boiling water on tap. From that moment on he was captivated by this idea. He left the company he was working for and started developing an appliance that would dispense boiling water instantly. Quooker was born.

THE WORLD'S FIRST - Dedicated 100°C boiling

Quooker remains the world's first and only dedicated 100°C boiling-water tap and holds global patents. The FUSION marked a significant development in the history of the company and now you can have one tap that delivers hot, cold and 100°C boiling water all from a cold feed.

CUSTOMER SATISFACTION - Dedication and passion is at the heart of every Quooker

At Quooker, our customers take centre stage as we continuously re-evaluate the quality of service that we provide. We seek to identify and address every one of our customers' requirements and we also strive to fulfill the expected needs in order to deliver greater customer satisfaction across the board. Customer Satisfaction is our No. 1 priority.

0345 8 33 33 33
www.quooker.co.uk

Quooker®
THE BOILING-WATER TAP

ALNO



DESIGN

INNOVATION

QUALITY

The new Concretto colour in our ceramic ALNOCERA range brings a contemporary, urban feel to your home with sophisticated luxury. Part of the new 2015 **ALNO** kitchen collection.



ALNO kitchens are sold through John Lewis Department stores and selected Specialists nationwide.

Alton (Hampshire), Ayr, Balham (Greater London), Beaconsfield, Blackburn, Bristol, Bury St Edmunds, Chiswick, Croydon (Greater London), Dorking, Eastbourne, Exeter, Findon (West Sussex), Horndean (Hampshire), Leeds, Leicester, London W1, Maldon, Manchester (Altrincham, Prestwich), Newcastle under Lyme, Newport, Northampton, Nottingham, Pinner, Reading, Sevenoaks, St Albans, Sutton Coldfield, Surbiton (Greater London), Ulverston (Cumbria), Weybridge, Wirral.

For a copy of our brochure simply go online or call: 08700 433742

www.alnokitchens.co.uk

